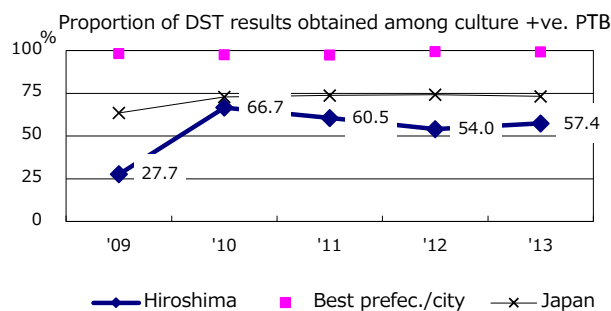
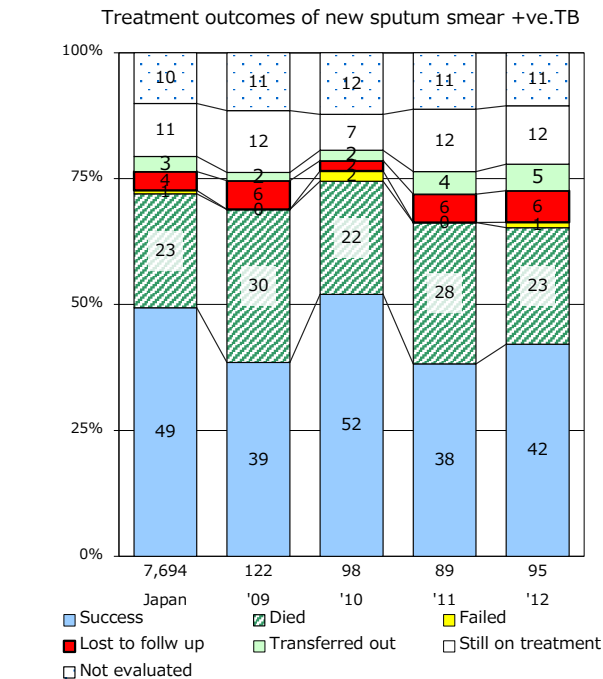
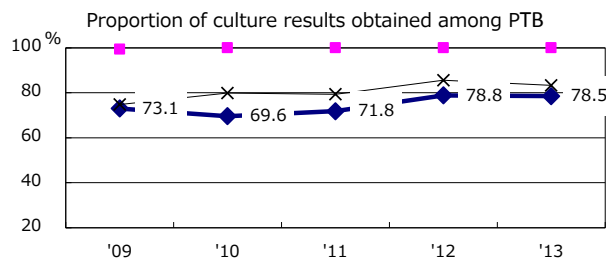
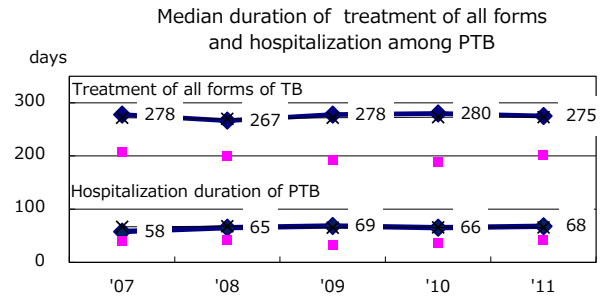
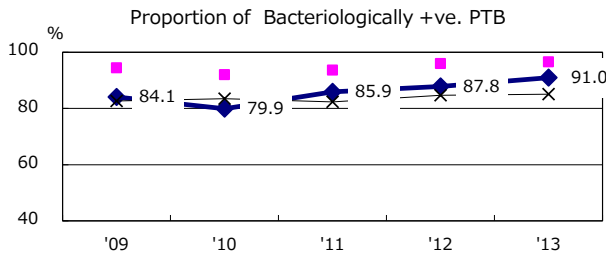
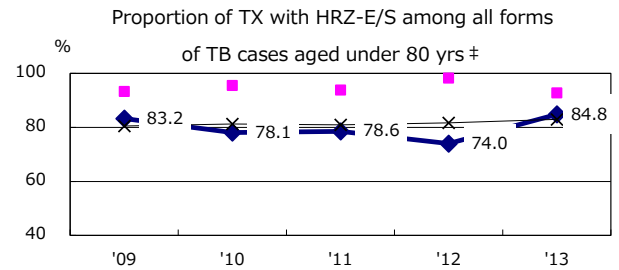
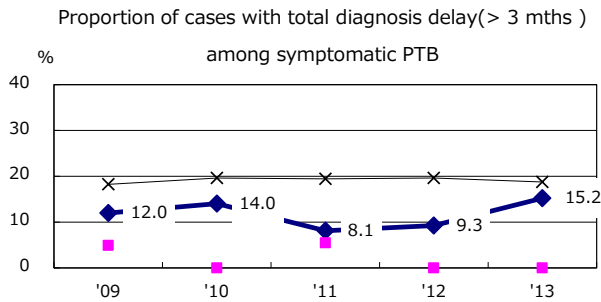
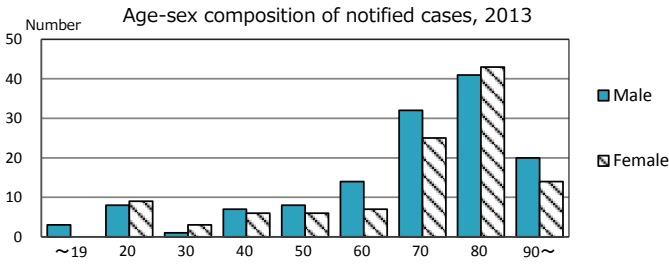
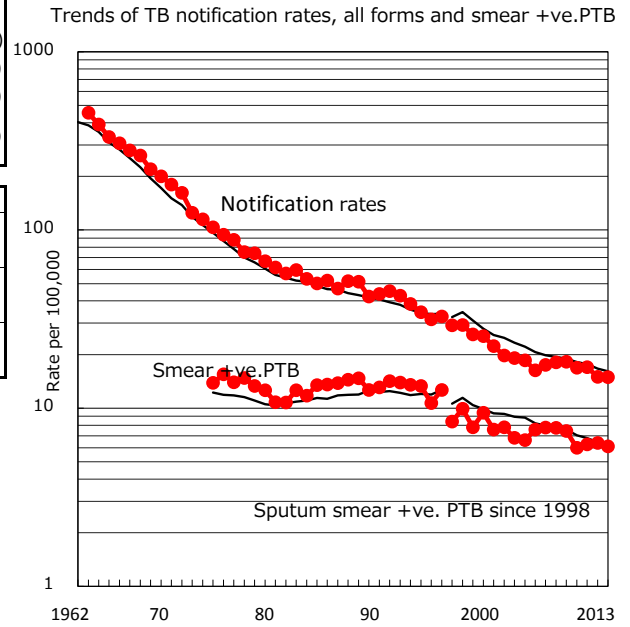


TB statistics in 2013 (Population in Hiroshima 1,656,644)	
Among newly registered :	(Japan)
Foreign borns	22 8.9% (5.0%)
TB cases with homeless history	1 0.4% (1.6%)
Male aged 35-59, without job and receiving public assistance	0 0.0% (10.8%)

Trends	'09	'10	'11	'12	'13
Notified cases	308	284	285	249	247
Rate per 100,000 population	18.2	16.8	17.0	15.0	14.9
Sputum smear +ve. pul.cases	126	101	105	106	101
Rate per 100,000 population	7.4	6.0	6.3	6.4	6.1
Latent Tuberculosis Infection	52	63	220	105	69
Rate per 100,000 population	3.1	3.7	13.1	6.3	4.2



PTB : pumonyary TB

† Excluding unknown delay(%)	'09	'10	'11	'12	'13
	72.7	61.7	75.7	64.5	69.5

‡ Excluding unknown Tx(%)	'09	'10	'11	'12	'13
	1.5	1.8	0.6	2.3	3.1