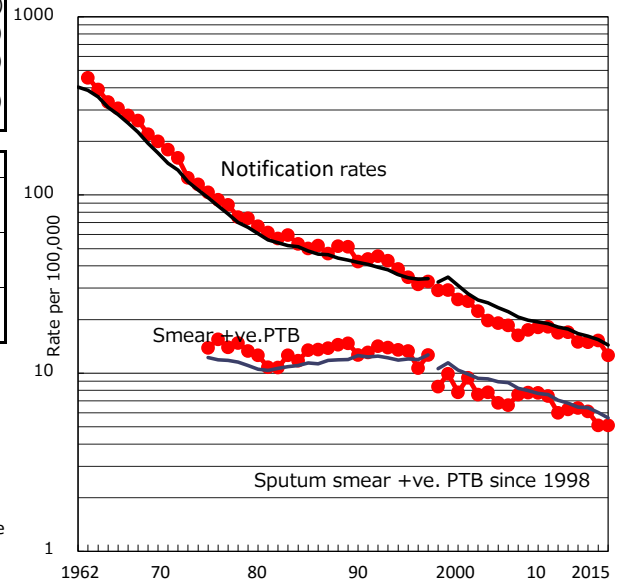


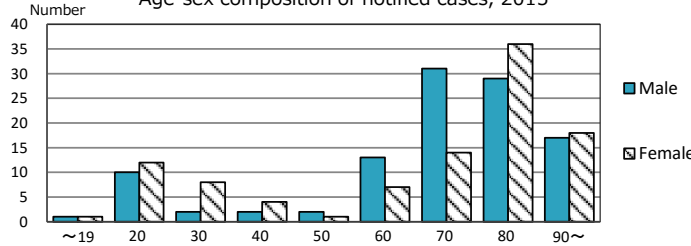
TB statistics in 2015 (Population in Hiroshima 1,650,456)	
Among newly notified : (Japan)	
Foreign borns	21 10.1% (6.4%)
TB cases with homeless history	1 0.5% (0.9%)
Male aged 35-59, without job and receiving public assistance	0 0.0% (9.0%)

Trends	'11	'12	'13	'14	'15
Notified cases	285	249	247	251	208
Rate per 100,000 population	17.0	15.0	14.9	15.2	12.6
Sputum smear +ve. PTB	105	106	101	84	84
Rate per 100,000 population	6.3	6.4	6.1	5.1	5.1
Latent Tuberculosis Infection	220	105	69	73	64
Rate per 100,000 population	13.1	6.3	4.2	4.4	3.9

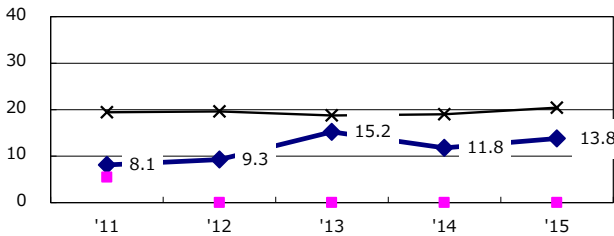
Trends of TB notification rates, all forms and smear +ve. PTB



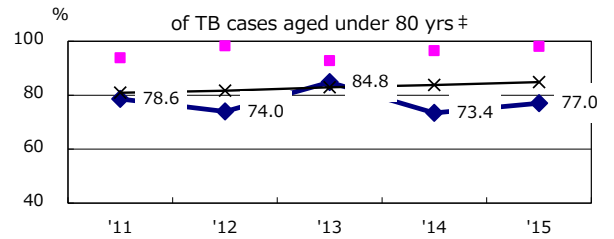
Age-sex composition of notified cases, 2015



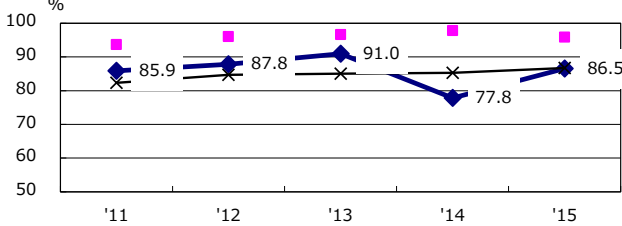
Proportion of cases with total diagnosis delay (> 3 mths) among symptomatic PTB\*



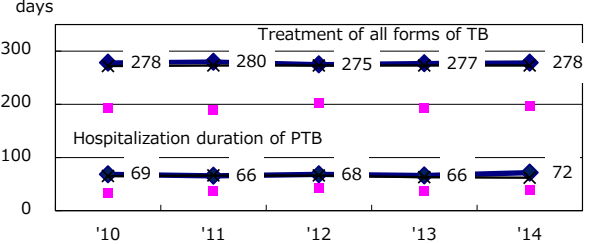
Proportion of TX with HRZ-E/S among all forms of TB cases aged under 80 yrs †



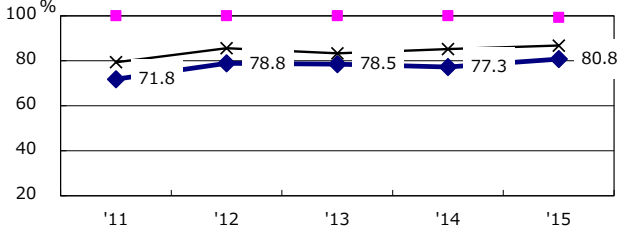
Proportion of Bacteriologically +ve. PTB



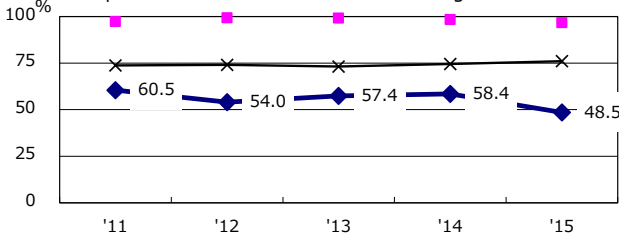
Median duration of treatment of all forms and hospitalization among PTB



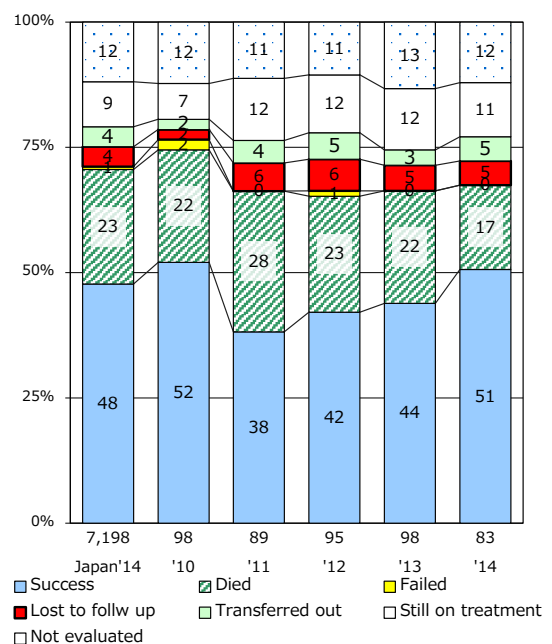
Proportion of culture results obtained among PTB



Proportion of DST results obtained among culture +ve. PTB



Treatment outcomes of new sputum smear +ve. TB



PTB : pulmonary TB

† Excluding unknown delay(%)	'11	'12	'13	'14	'15
	75.7	64.5	69.5	74.6	76.6

‡ Excluding unknown Tx(%)	'11	'12	'13	'14	'15
	0.6	2.3	3.1	0.0	7.4