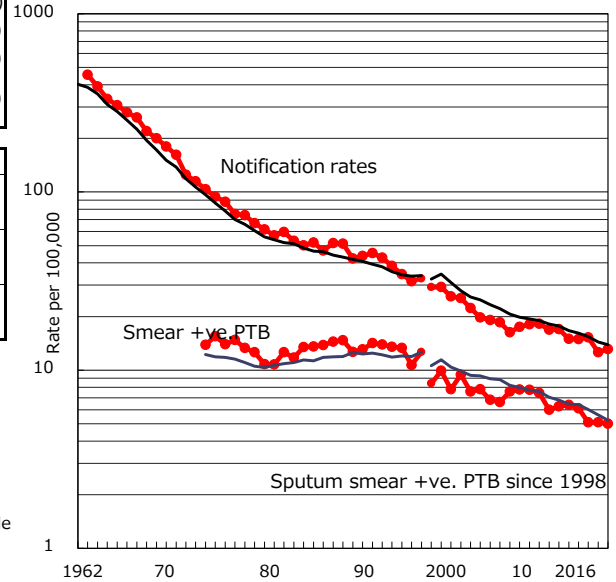


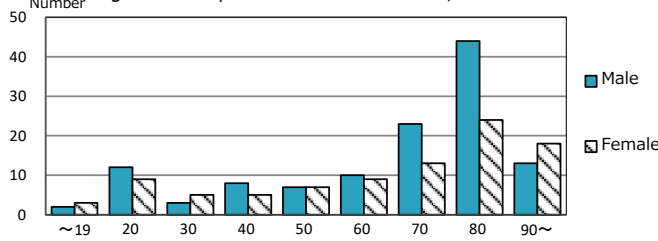
TB statistics in 2016 (Population in Hiroshima 1,640,968)	
Among newly notified : (Japan)	
Foreign borns	31 14.4% (7.6%)
TB cases with homeless history	0 0.0% (1.0%)
Male aged 35-59,without job and receiving public assistance	2 11.1% (7.7%)

Trends	'12	'13	'14	'15	2016
Notified cases	249	247	251	208	215
Rate per 100,000 population	15.0	14.9	15.2	12.6	13.1
Sputum smear +ve. PTB	106	101	84	84	82
Rate per 100,000 population	6.4	6.1	5.1	5.1	5.0
Latent Tuberculosis Infection	105	69	73	64	95
Rate per 100,000 population	6.3	4.2	4.4	3.9	5.8

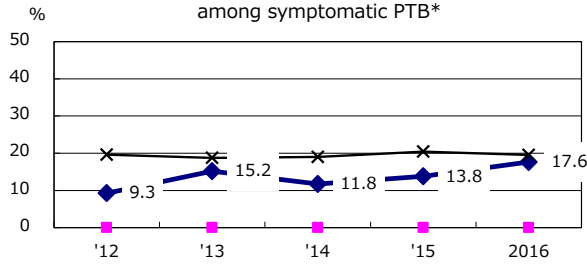
Trends of TB notification rates, all forms and smear +ve.PTB



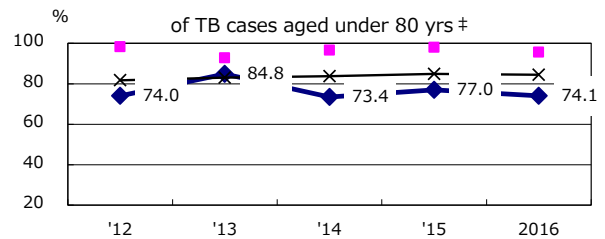
Age-sex composition of notified cases, 2016



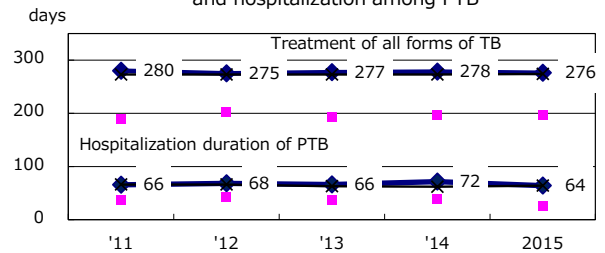
Proportion of cases with total diagnosis delay(> 3 mths) among symptomatic PTB*



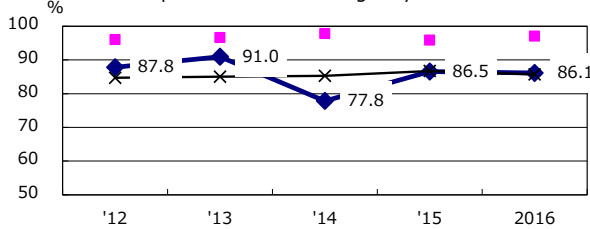
Proportion of TX with HRZ-E/S among all forms of TB cases aged under 80 yrs †



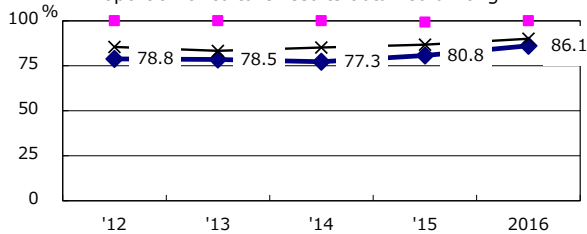
Median duration of treatment of all forms and hospitalization among PTB



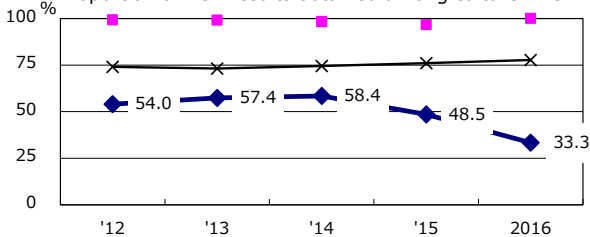
Proportion of Bacteriologically +ve. PTB



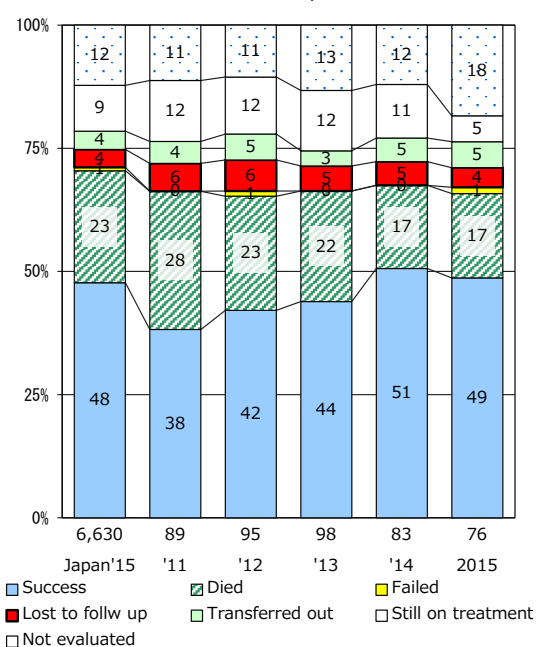
Proportion of culture results obtained among PTB



Proportion of DST results obtained among culture +ve. PTB



Treatment outcomes of new sputum smear +ve.TB



PTB : pulmonary TB

† Excluding unknown delay(%)	'12	'13	'14	'15	2016
	64.5	69.5	74.6	76.6	87.2

‡ Excluding unknown Tx(%)	'12	'13	'14	'15	2016
	2.3	3.1	0.0	7.4	6.9