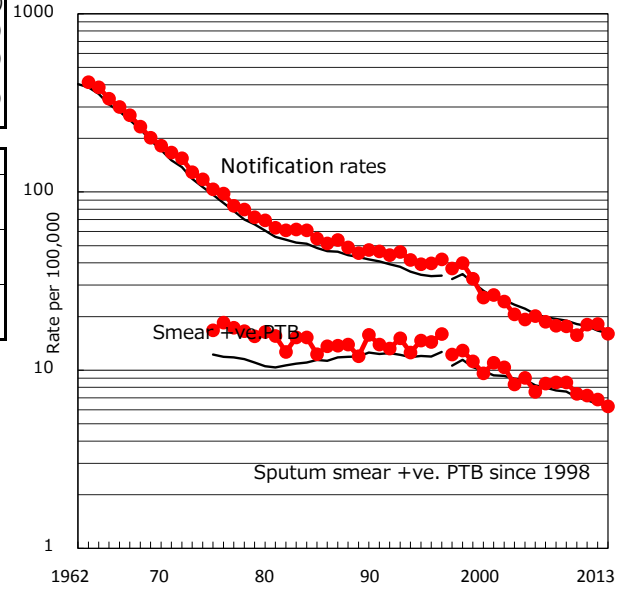


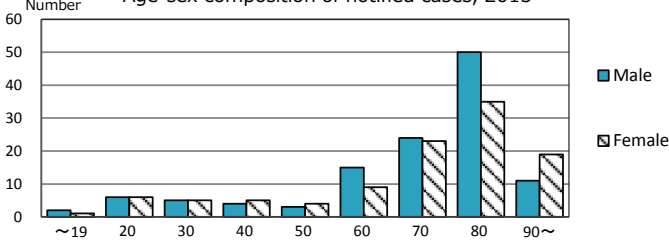
TB statistics in 2013 ( Population in Yamaguchi 1,419,544 )	
Among newly registered : (Japan)	
Foreign borns	11 4.8% (5.0%)
TB cases with homeless history	3 1.3% (1.6%)
Male aged 35-59, without job and receiving public assistance	0 0.0% (10.8%)

Trends	'09	'10	'11	'12	'13
Notified cases	256	228	260	260	227
Rate per 100,000 population	17.6	15.7	18.0	18.2	16.0
Sputum smear +ve. pul.cases	124	107	104	98	89
Rate per 100,000 population	8.5	7.4	7.2	6.9	6.3
Latent Tuberculosis Infection	24	12	74	103	43
Rate per 100,000 population	1.6	0.8	5.1	7.2	3.0

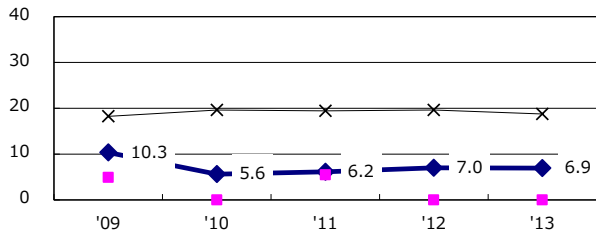
Trends of TB notification rates, all forms and smear +ve.PTB



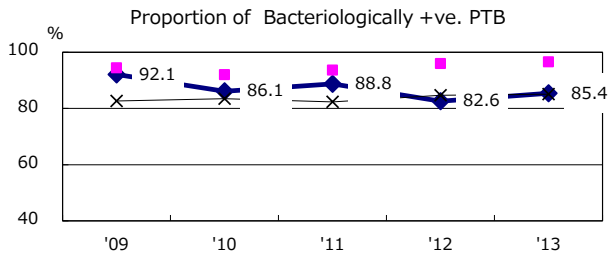
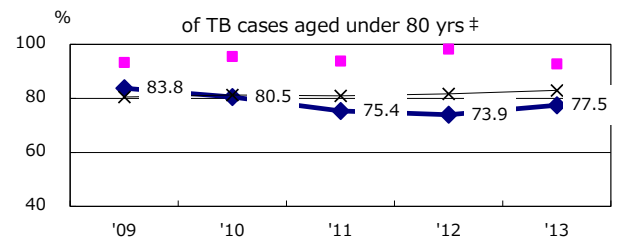
Age-sex composition of notified cases, 2013



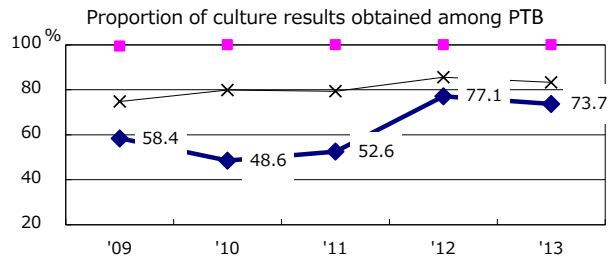
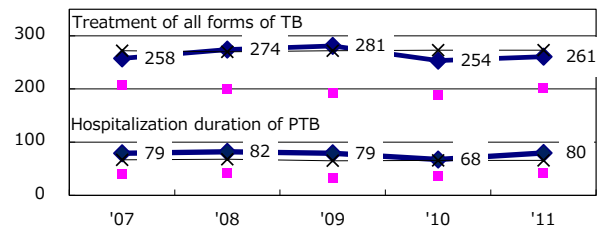
Proportion of cases with total diagnosis delay (> 3 mths) among symptomatic PTB



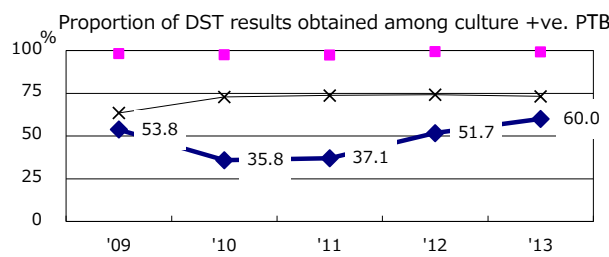
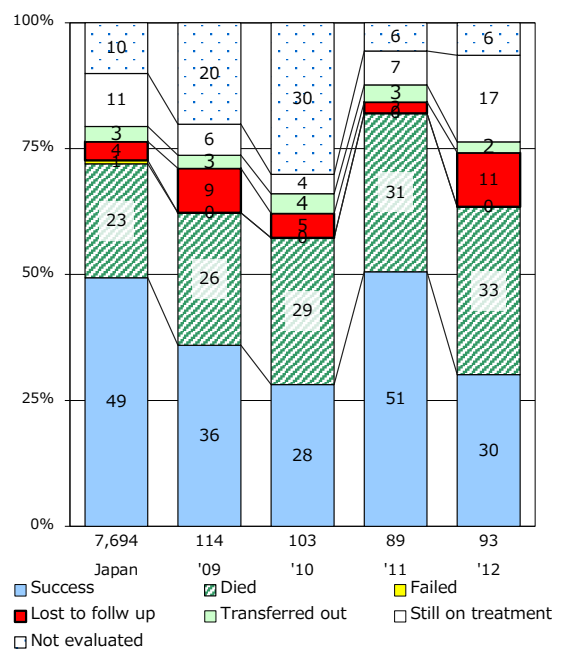
Proportion of TX with HRZ-E/S among all forms of TB cases aged under 80 yrs †



Median duration of treatment of all forms and hospitalization among PTB



Treatment outcomes of new sputum smear +ve.TB



PTB : pumonyary TB

† Excluding unknown delay(%)	'09	'10	'11	'12	'13
	48.2	38.6	55.8	42.7	22.9

‡ Excluding unknown Tx(%)	'09	'10	'11	'12	'13
	3.1	2.4	6.3	2.1	0.9