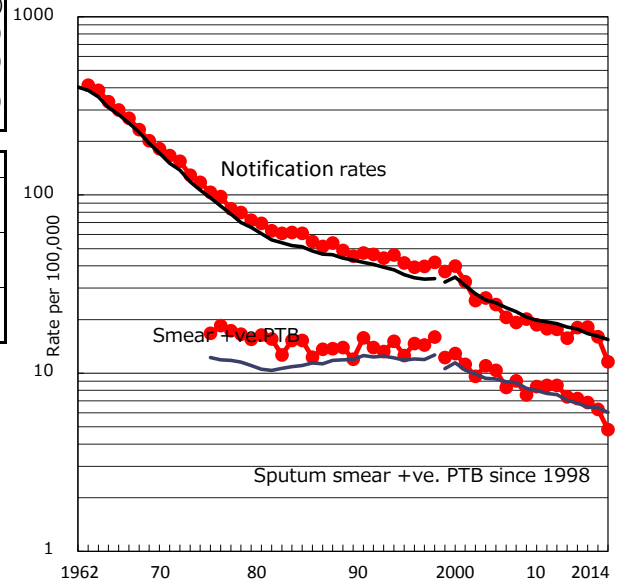


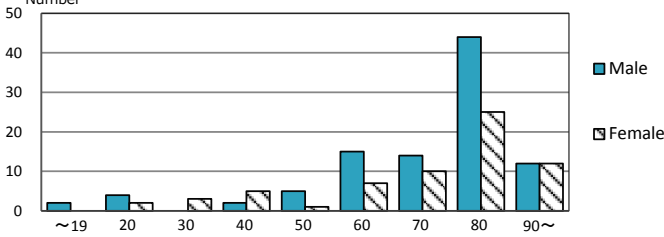
TB statistics in 2014 (Population in Yamaguchi 1,408,178)	
Among newly registered :	(Japan)
Foreign borns	2 1.2% (5.6%)
TB cases with homeless history	1 0.6% (1.1%)
Male aged 35-59,without job and receiveing public assistance	1 14.3% (8.0%)

Trends	'10	'11	'12	'13	'14
Notified cases	228	260	260	227	163
Rate per 100,000 population	15.7	18.0	18.2	16.0	11.6
Sputum smear +ve. pul.cases	107	104	98	89	68
Rate per 100,000 population	7.4	7.2	6.9	6.3	4.8
Latent Tuberculosis Infection	12	74	103	43	78
Rate per 100,000 population	0.8	5.1	7.2	3.0	5.5

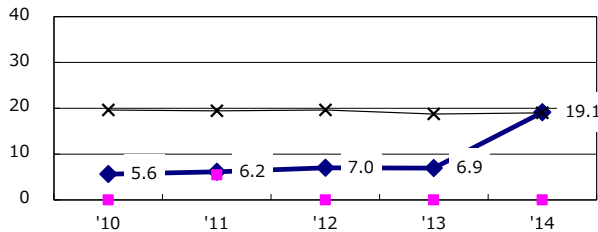
Trends of TB notification rates, all forms and smear +ve.PTB



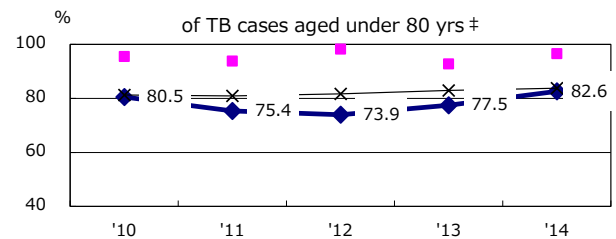
Age-sex composition of notified cases, 2014



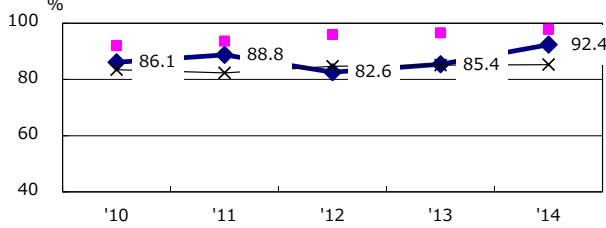
Proportion of cases with total diagnosis delay(> 3 mths) among symptomatic PTB*



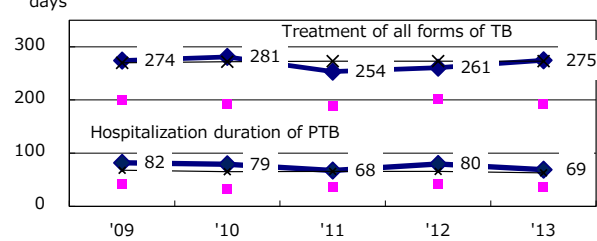
Proportion of TX with HRZ-E/S among all forms



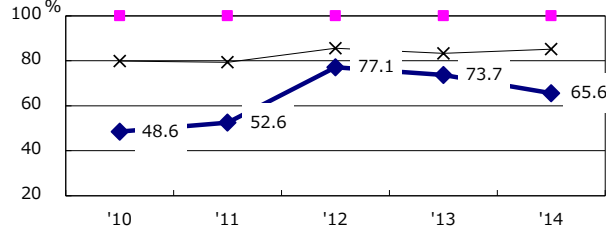
Proportion of Bacteriologically +ve. PTB



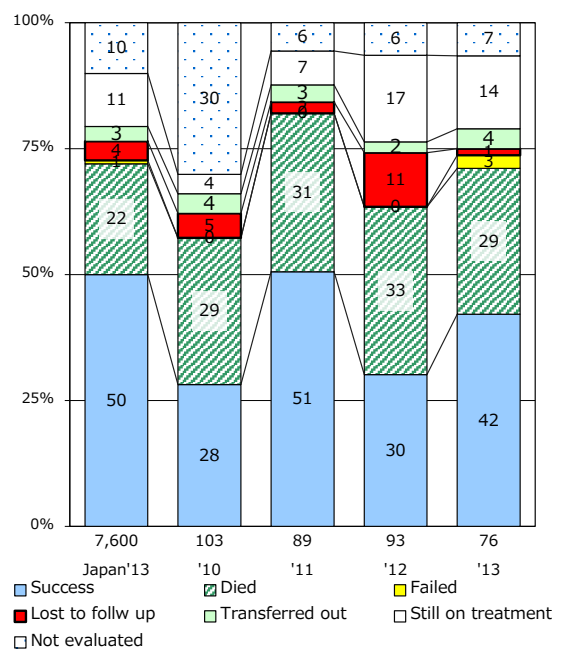
Median duration of treatment of all forms and hospitalization among PTB



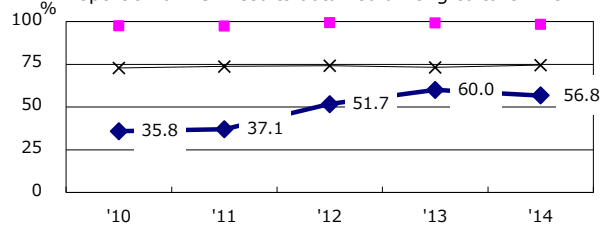
Proportion of culture results obtained among PTB



Treatment outcomes of new sputum smear +ve.TB



Proportion of DST results obtained among culture +ve. PTB



PTB : pumonary TB

† Excluding unknown delay(%)	'10	'11	'12	'13	'14
	38.6	55.8	42.7	22.9	35.2

‡ Excluding unknown Tx(%)	'10	'11	'12	'13	'14
	2.4	6.3	2.1	0.9	1.4