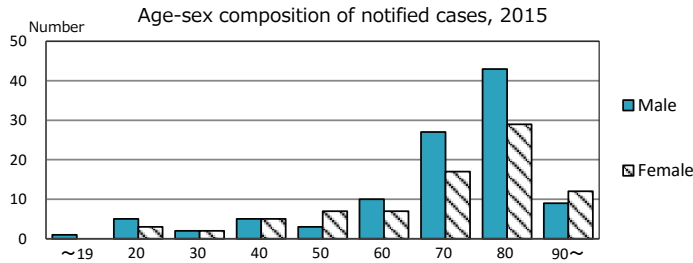
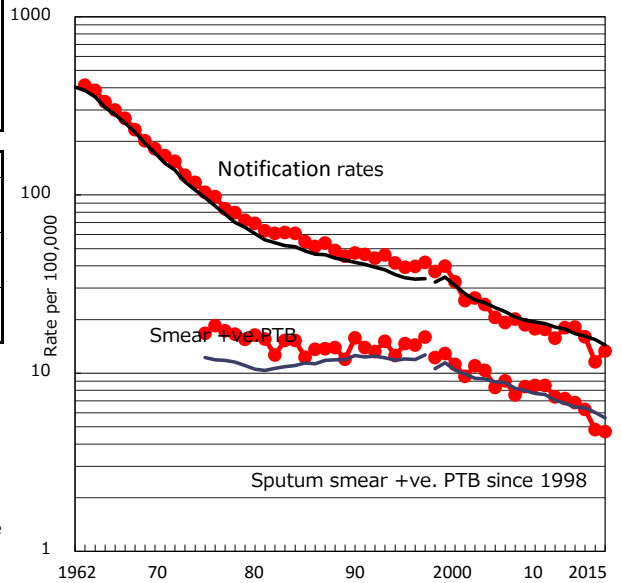


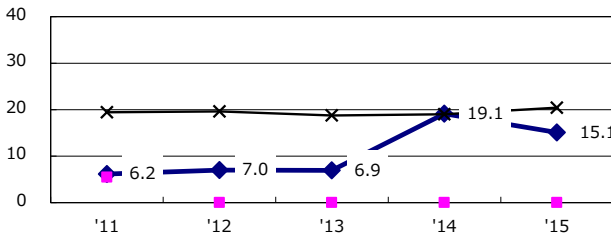
TB statistics in 2015 (Population in Yamaguchi 1,405,007)	
Among newly notified :	(Japan)
Foreign borns	5 2.7% (6.4%)
TB cases with homeless history	0 0.0% (0.9%)
Male aged 35-59, without job and receiving public assistance	0 0.0% (9.0%)

Trends	'11	'12	'13	'14	'15
Notified cases	260	260	227	163	187
Rate per 100,000 population	18.0	18.2	16.0	11.6	13.3
Sputum smear +ve. PTB	104	98	89	68	66
Rate per 100,000 population	7.2	6.9	6.3	4.8	4.7
Latent Tuberculosis Infection	74	103	43	78	33
Rate per 100,000 population	5.1	7.2	3.0	5.5	2.3

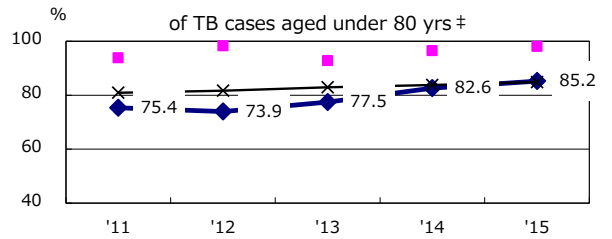
Trends of TB notification rates, all forms and smear +ve.PTB



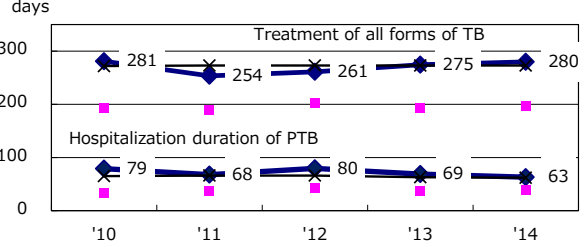
Proportion of cases with total diagnosis delay (> 3 mths) among symptomatic PTB\*



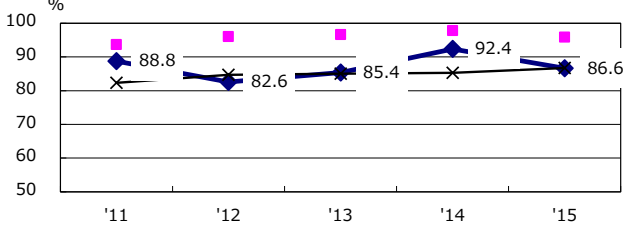
Proportion of TX with HRZ-E/S among all forms of TB cases aged under 80 yrs †



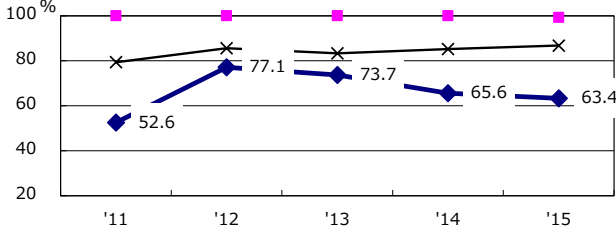
Median duration of treatment of all forms and hospitalization among PTB



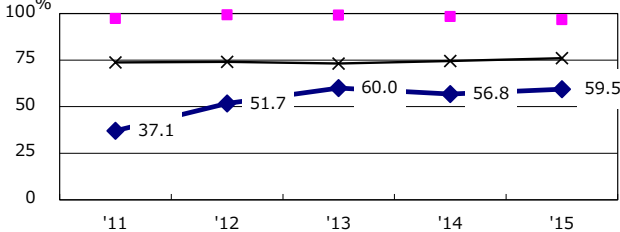
Proportion of Bacteriologically +ve. PTB



Proportion of culture results obtained among PTB



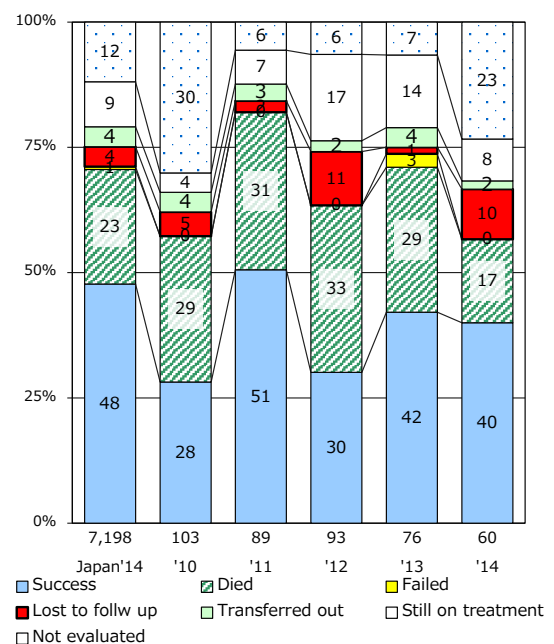
Proportion of DST results obtained among culture +ve. PTB



◆ Yamaguchi    ■ Best prefec./city    × Japan

PTB : pulmonary TB

Treatment outcomes of new sputum smear +ve.TB



† Excluding unknown delay(%)    ‡ Excluding unknown Tx(%)

	'11	'12	'13	'14	'15
† Excluding unknown delay(%)	55.8	42.7	22.9	35.2	49.5

	'11	'12	'13	'14	'15
‡ Excluding unknown Tx(%)	6.3	2.1	0.9	1.4	6.4