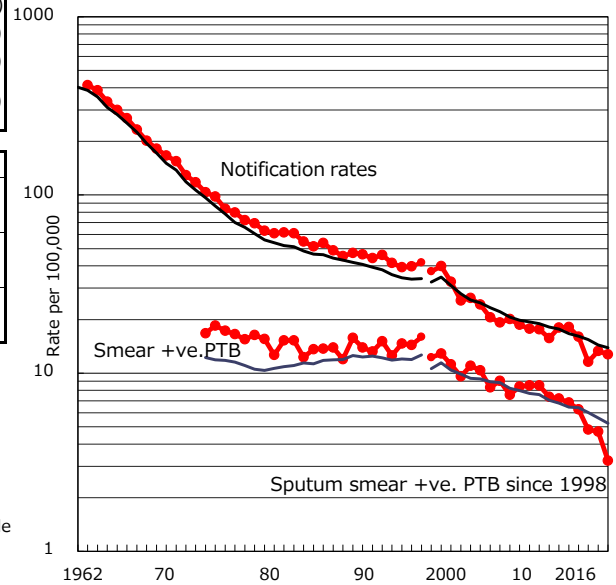


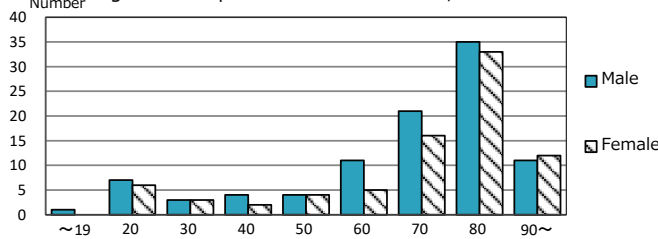
TB statistics in 2016 ( Population in Yamaguchi 1,394,400 )	
Among newly notified :	(Japan)
Foreign borns	17 9.6% (7.6%)
TB cases with homeless history	0 0.0% (1.0%)
Male aged 35-59,without job and receiving public assistance	0 0.0% (7.7%)

Trends	'12	'13	'14	'15	2016
Notified cases	260	227	163	187	178
Rate per 100,000 population	18.2	16.0	11.6	13.3	12.8
Sputum smear +ve. PTB	98	89	68	66	45
Rate per 100,000 population	6.9	6.3	4.8	4.7	3.2
Latent Tuberculosis Infection	103	43	78	33	61
Rate per 100,000 population	7.2	3.0	5.5	2.3	4.4

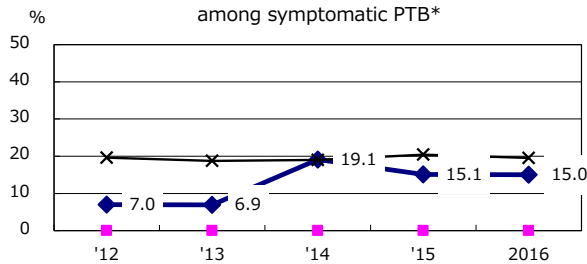
Trends of TB notification rates, all forms and smear +ve.PTB



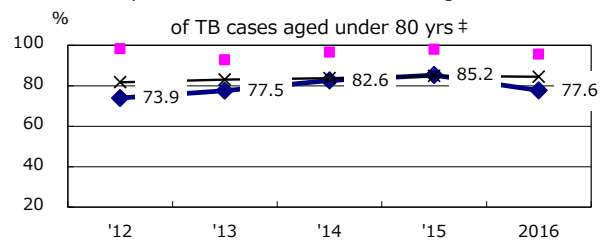
Age-sex composition of notified cases, 2016



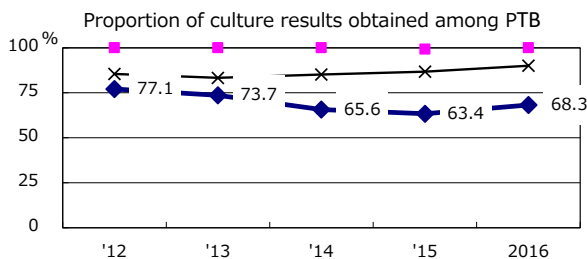
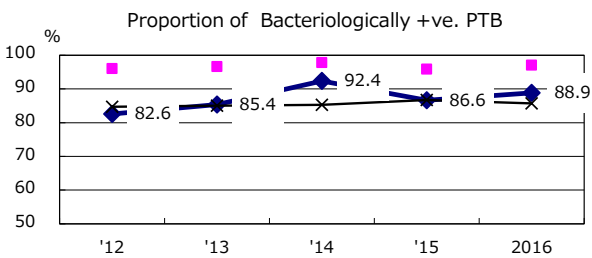
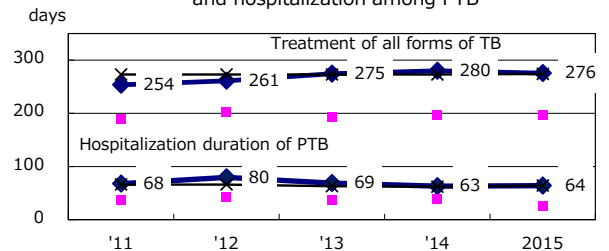
Proportion of cases with total diagnosis delay(> 3 mths) among symptomatic PTB\*



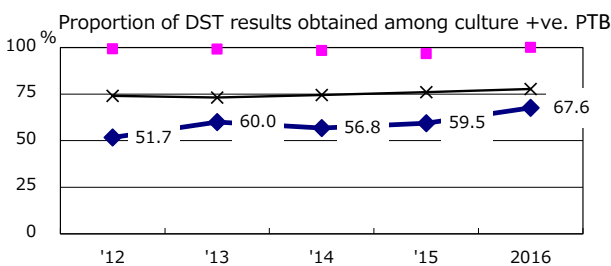
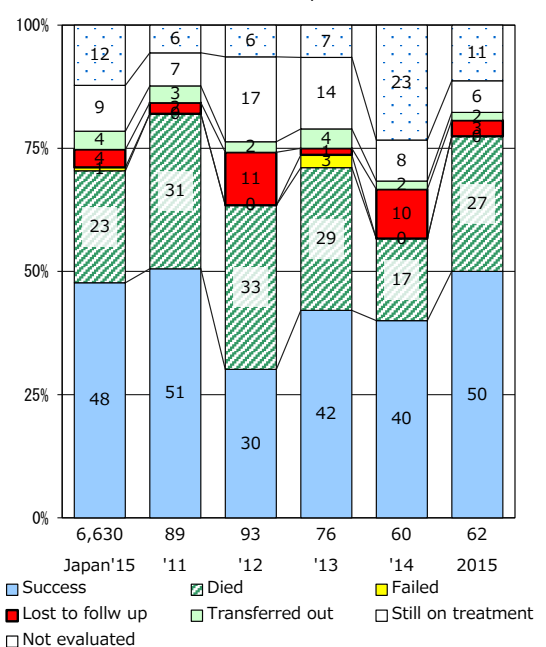
Proportion of TX with HRZ-E/S among all forms of TB cases aged under 80 yrs †



Median duration of treatment of all forms and hospitalization among PTB



Treatment outcomes of new sputum smear +ve.TB



PTB : pulmonary TB

† Excluding unknown delay(%)	'12	'13	'14	'15	2016
	42.7	22.9	35.2	49.5	55.1

‡ Excluding unknown Tx(%)	'12	'13	'14	'15	2016
	2.1	0.9	1.4	6.4	2.3