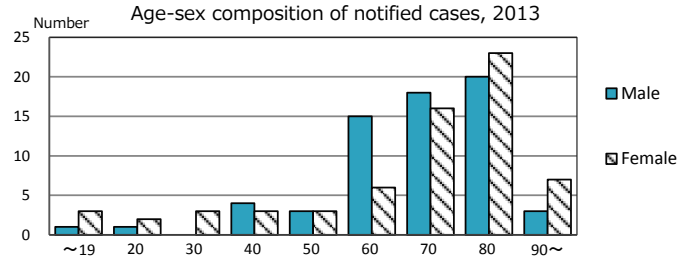
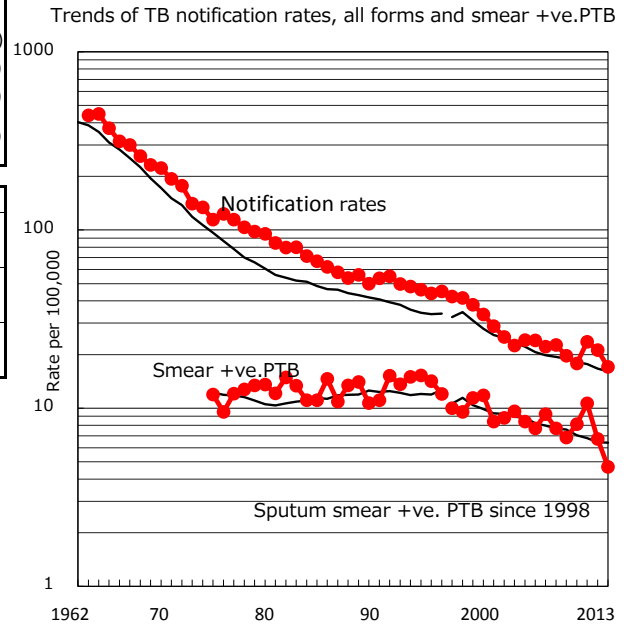
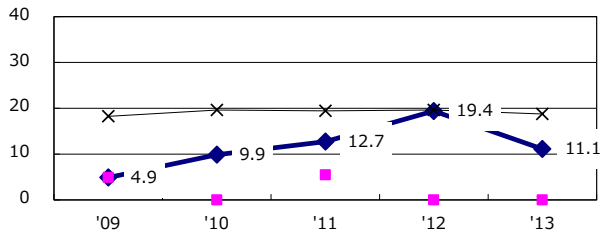


TB statistics in 2013 (Population in Tokushima 769,711)	
Among newly registered :	(Japan)
Foreign borns	4 3.1% (5.0%)
TB cases with homeless history	0 0.0% (1.6%)
Male aged 35-59, without job and receiving public assistance	0 0.0% (10.8%)

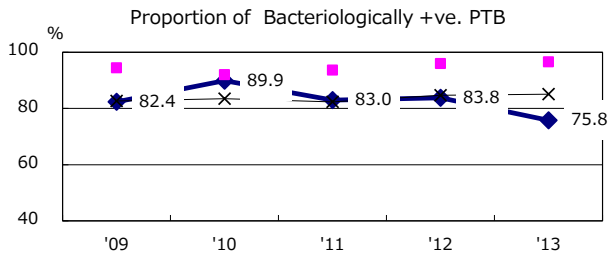
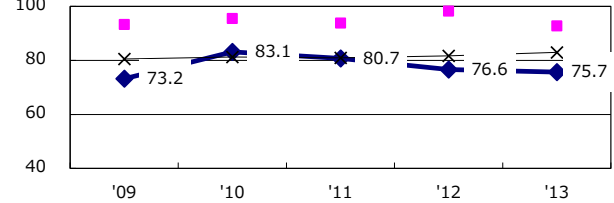
Trends	'09	'10	'11	'12	'13
Notified cases	155	140	184	164	131
Rate per 100,000 population	19.6	17.8	23.6	21.1	17.0
Sputum smear +ve. pul.cases	54	64	83	52	36
Rate per 100,000 population	6.8	8.1	10.6	6.7	4.7
Latent Tuberculosis Infection	29	25	90	66	25
Rate per 100,000 population	3.7	3.2	11.5	8.5	3.2



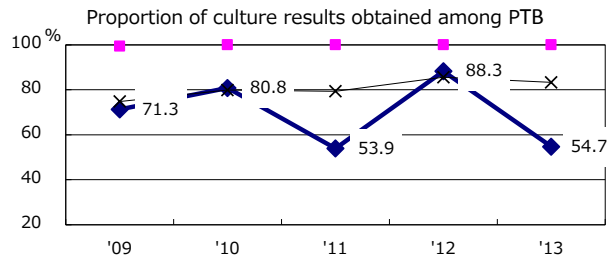
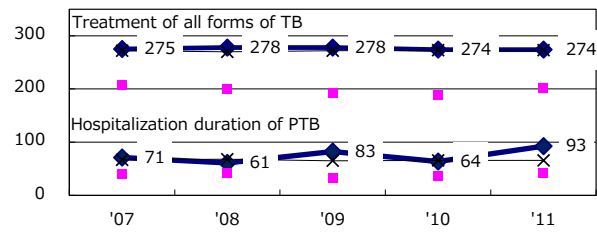
Proportion of cases with total diagnosis delay(> 3 mths) among symptomatic PTB



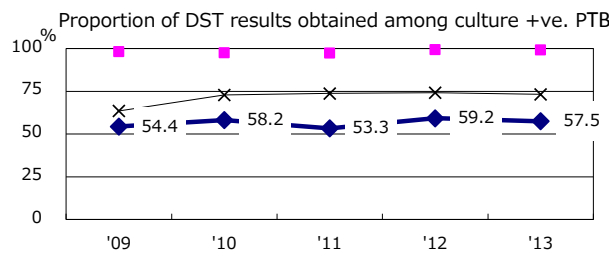
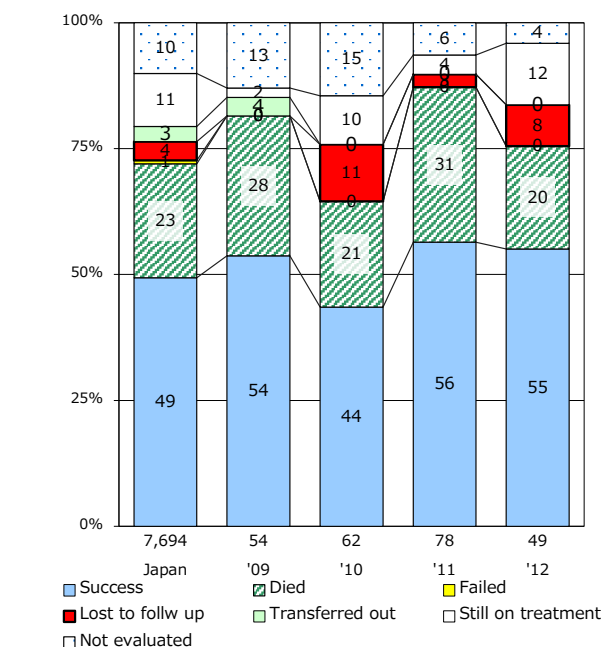
Proportion of TX with HRZ-E/S among all forms of TB cases aged under 80 yrs †



Median duration of treatment of all forms and hospitalization among PTB



Treatment outcomes of new sputum smear +ve.TB



PTB : pumonyary TB

† Excluding unknown delay(%)	'09	'10	'11	'12	'13
	14.6	14.7	17.7	23.9	42.3

‡ Excluding unknown Tx(%)	'09	'10	'11	'12	'13
	0.0	0.0	1.8	0.0	5.1