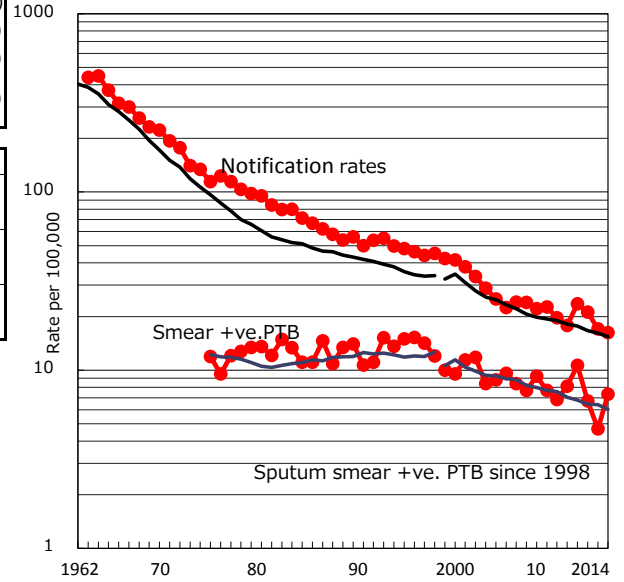


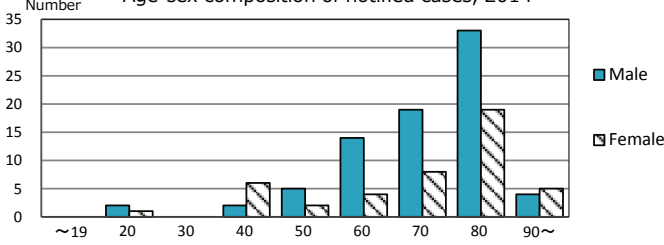
TB statistics in 2014 (Population in Tokushima 763,864)	
Among newly registered : (Japan)	
Foreign borns	3 2.4% (5.6%)
TB cases with homeless history	0 0.0% (1.1%)
Male aged 35-59, without job and receiving public assistance	1 14.3% (8.0%)

Trends	'10	'11	'12	'13	'14
Notified cases	140	184	164	131	124
Rate per 100,000 population	17.8	23.6	21.1	17.0	16.2
Sputum smear +ve. pul.cases	64	83	52	36	56
Rate per 100,000 population	8.1	10.6	6.7	4.7	7.3
Latent Tuberculosis Infection	25	90	66	25	24
Rate per 100,000 population	3.2	11.5	8.5	3.2	3.1

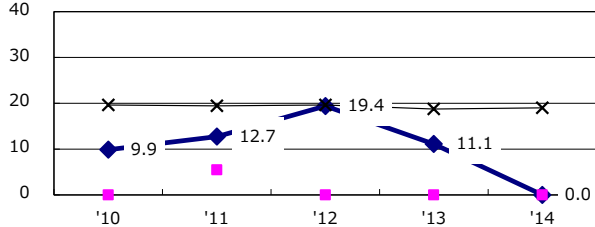
Trends of TB notification rates, all forms and smear +ve.PTB



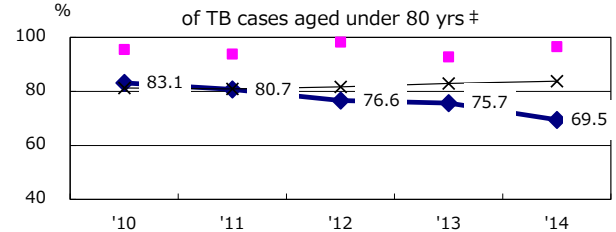
Age-sex composition of notified cases, 2014



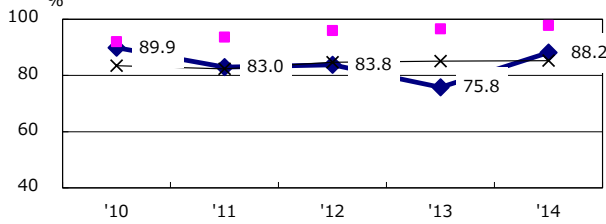
Proportion of cases with total diagnosis delay(> 3 mths) among symptomatic PTB*



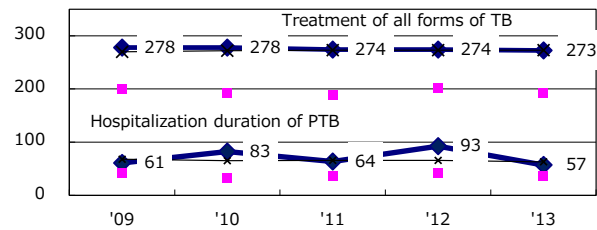
Proportion of TX with HRZ-E/S among all forms



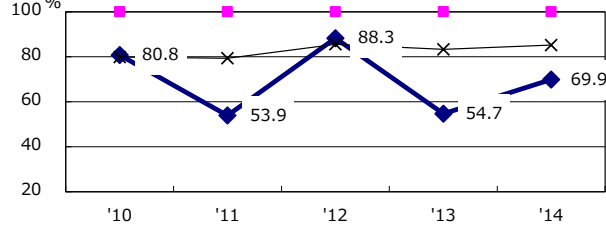
Proportion of Bacteriologically +ve. PTB



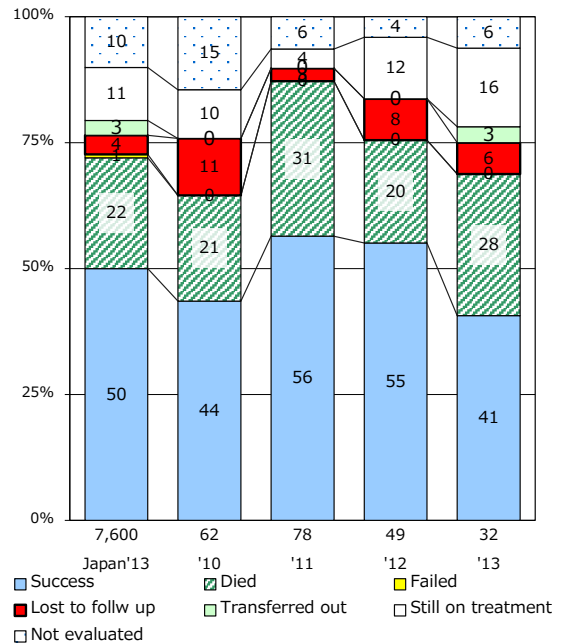
Median duration of treatment of all forms and hospitalization among PTB



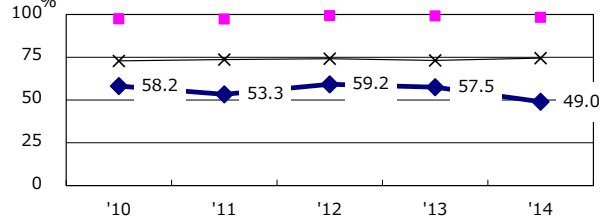
Proportion of culture results obtained among PTB



Treatment outcomes of new sputum smear +ve.TB



Proportion of DST results obtained among culture +ve. PTB



PTB : pumonary TB

† Excluding unknown delay(%)	'10	'11	'12	'13	'14
	14.7	17.7	23.9	42.3	80.0

‡ Excluding unknown Tx(%)	'10	'11	'12	'13	'14
	0.0	1.8	0.0	5.1	6.3