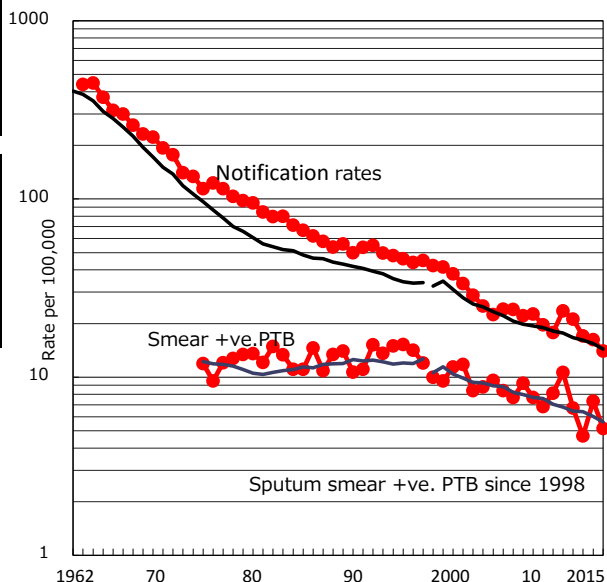


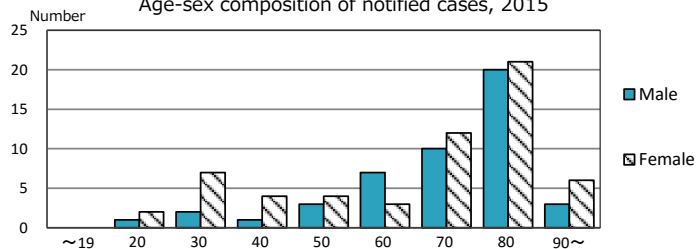
TB statistics in 2015 (Population in Tokushima 756,063)	
Among newly notified :	(Japan)
Foreign borns	6 5.7% (6.4%)
TB cases with homeless history	0 0.0% (0.9%)
Male aged 35-59, without job and receiving public assistance	0 0.0% (9.0%)

Trends	'11	'12	'13	'14	'15
Notified cases	184	164	131	124	106
Rate per 100,000 population	23.6	21.1	17.0	16.2	14.0
Sputum smear +ve. PTB	83	52	36	56	39
Rate per 100,000 population	10.6	6.7	4.7	7.3	5.2
Latent Tuberculosis Infection	90	66	25	24	34
Rate per 100,000 population	11.5	8.5	3.2	3.1	4.5

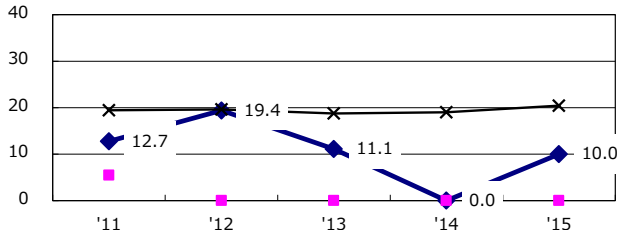
Trends of TB notification rates, all forms and smear +ve. PTB



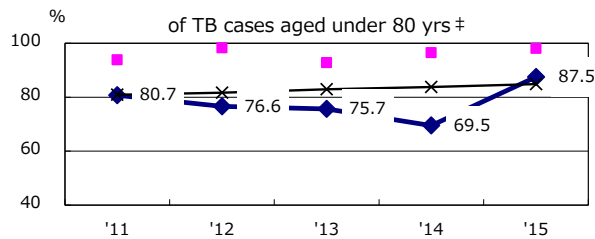
Age-sex composition of notified cases, 2015



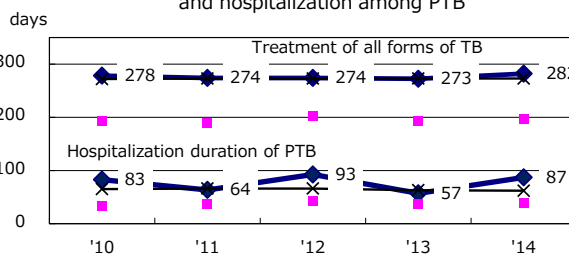
Proportion of cases with total diagnosis delay (> 3 mths) among symptomatic PTB*



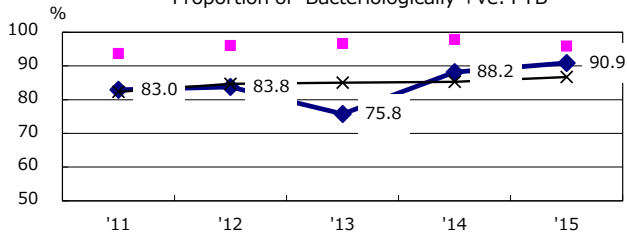
Proportion of TX with HRZ-E/S among all forms of TB cases aged under 80 yrs †



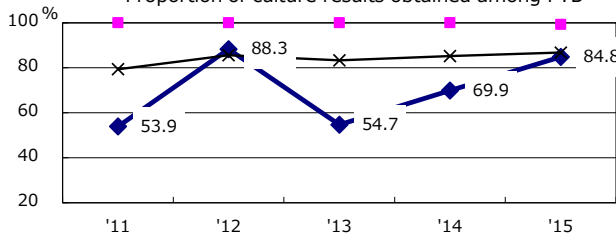
Median duration of treatment of all forms and hospitalization among PTB



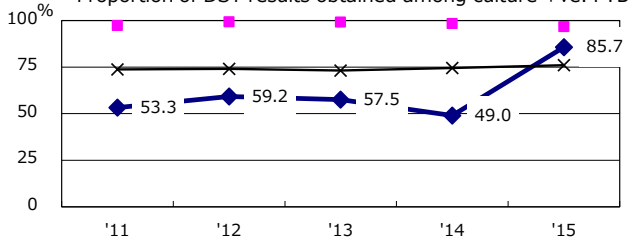
Proportion of Bacteriologically +ve. PTB



Proportion of culture results obtained among PTB



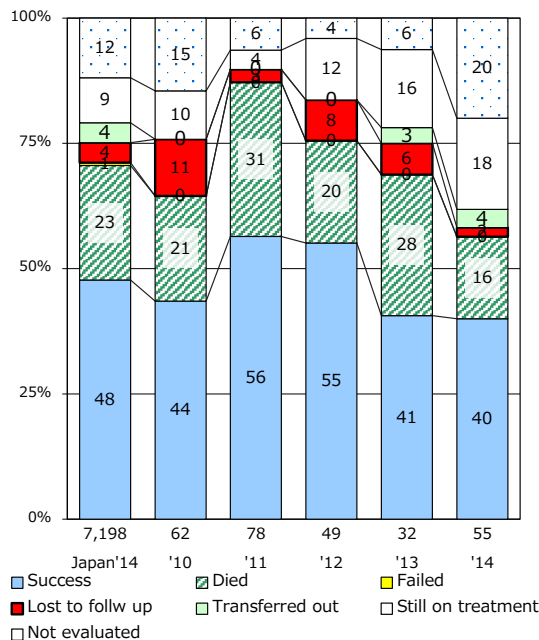
Proportion of DST results obtained among culture +ve. PTB



◆ Tokushima ■ Best prefec./city × Japan

PTB : pulmonary TB

Treatment outcomes of new sputum smear +ve. TB



† Excluding unknown delay(%) '11 '12 '13 '14 '15
17.7 23.9 42.3 80.0 65.5

‡ Excluding unknown Tx(%) '11 '12 '13 '14 '15
1.8 0.0 5.1 6.3 0.0