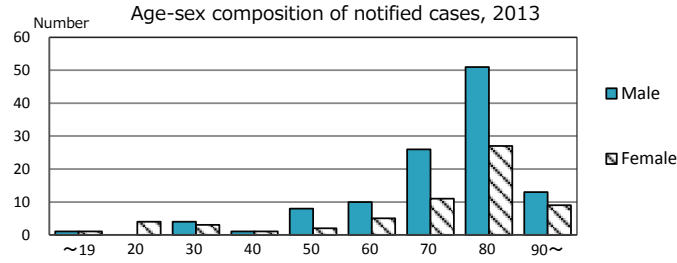
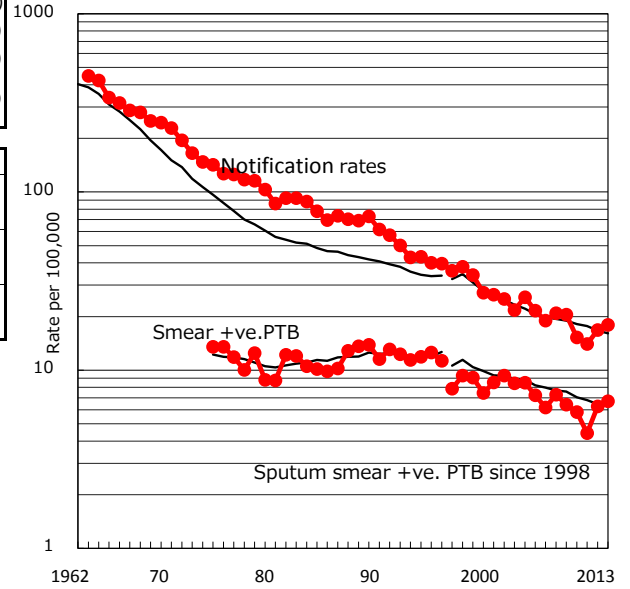


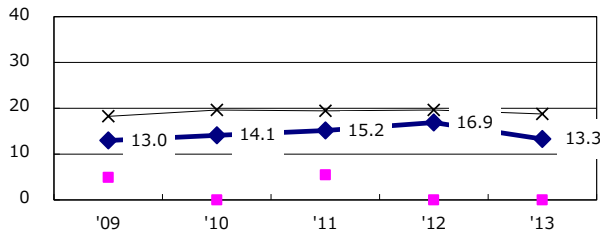
TB statistics in 2013 (Population in Kagawa 985,487)	
Among newly registered : (Japan)	
Foreign borns	3 1.7% (5.0%)
TB cases with homeless history	0 0.0% (1.6%)
Male aged 35-59, without job and receiving public assistance	1 7.7% (10.8%)

Trends	'09	'10	'11	'12	'13
Notified cases	205	152	139	166	177
Rate per 100,000 population	20.5	15.3	14.0	16.8	18.0
Sputum smear +ve. pul.cases	64	58	44	62	66
Rate per 100,000 population	6.4	5.8	4.4	6.3	6.7
Latent Tuberculosis Infection	44	36	43	37	30
Rate per 100,000 population	4.4	3.6	4.3	3.7	3.0

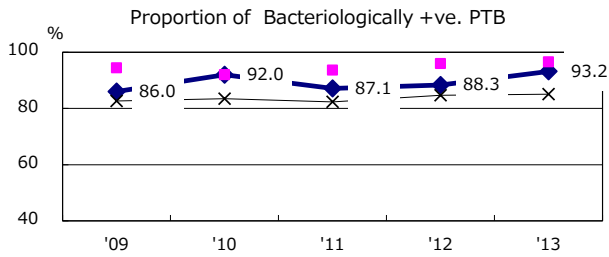
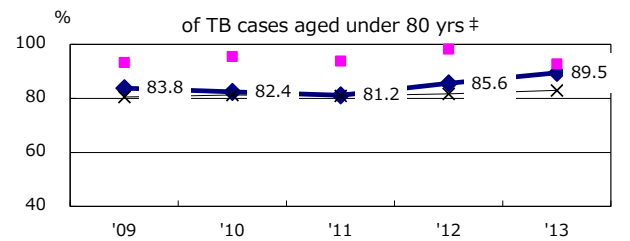
Trends of TB notification rates, all forms and smear +ve.PTB



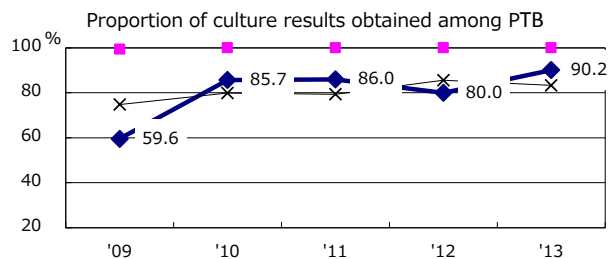
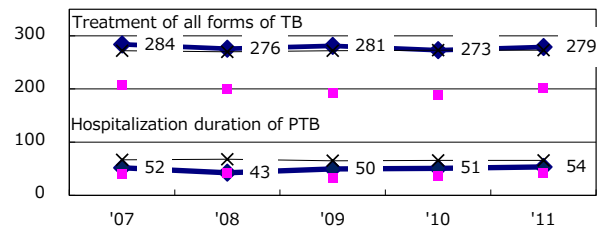
Proportion of cases with total diagnosis delay(> 3 mths) among symptomatic PTB



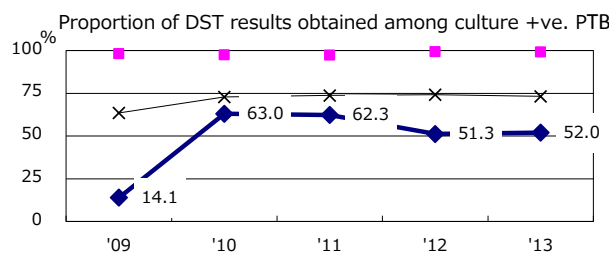
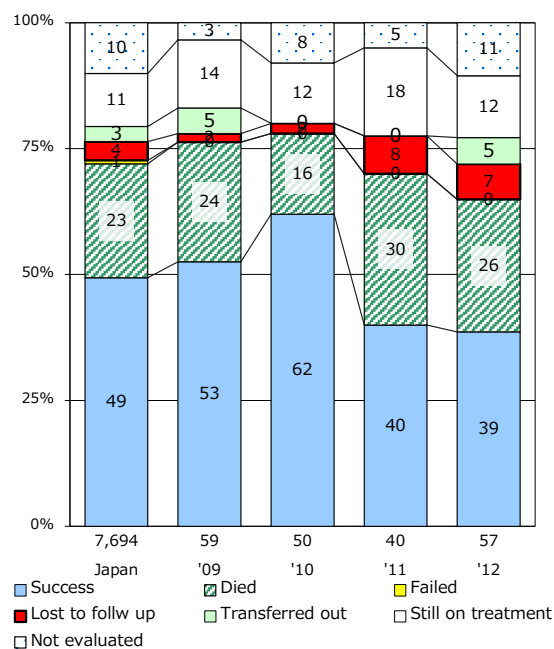
Proportion of TX with HRZ-E/S among all forms of TB cases aged under 80 yrs †



Median duration of treatment of all forms and hospitalization among PTB



Treatment outcomes of new sputum smear +ve.TB



PTB : pumonary TB

† Excluding unknown delay(%)

'09 '10 '11 '12 '13

‡ Excluding unknown Tx(%)

'09 '10 '11 '12 '13