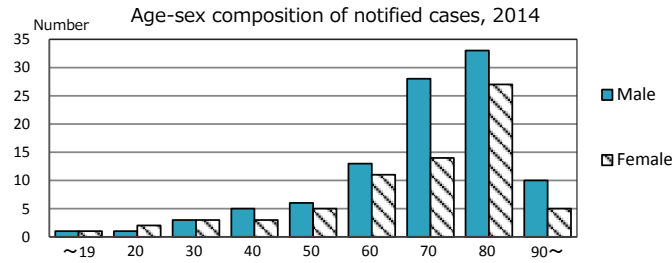
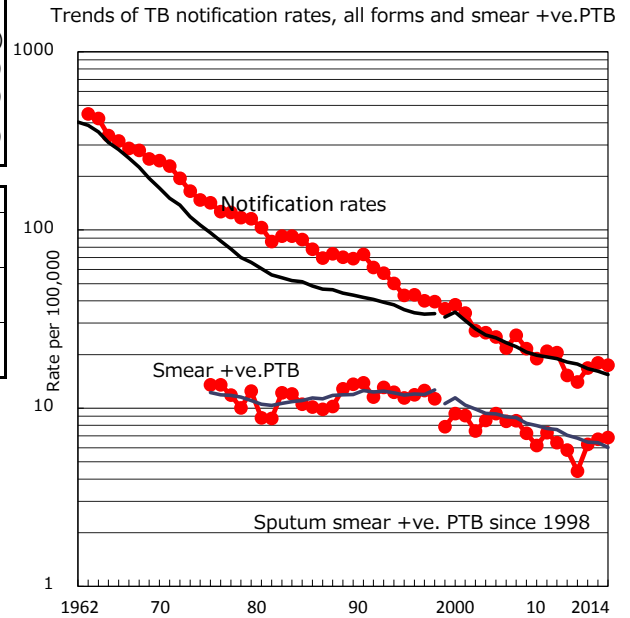
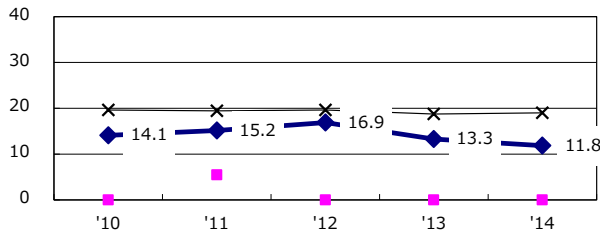


TB statistics in 2014 (Population in Kagawa 981,082)	
Among newly registered : (Japan)	
Foreign borns	5 2.9% (5.6%)
TB cases with homeless history	1 0.6% (1.1%)
Male aged 35-59, without job and receiving public assistance	2 14.3% (8.0%)

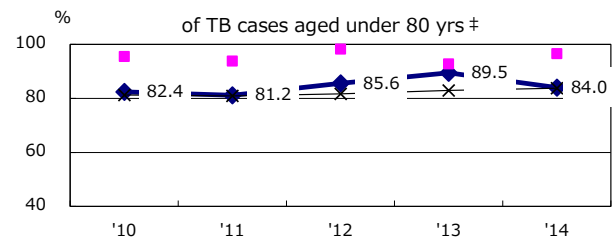
Trends	'10	'11	'12	'13	'14
Notified cases	152	139	166	177	171
Rate per 100,000 population	15.3	14.0	16.8	18.0	17.4
Sputum smear +ve. pul.cases	58	44	62	66	67
Rate per 100,000 population	5.8	4.4	6.3	6.7	6.8
Latent Tuberculosis Infection	36	43	37	30	27
Rate per 100,000 population	3.6	4.3	3.7	3.0	2.8



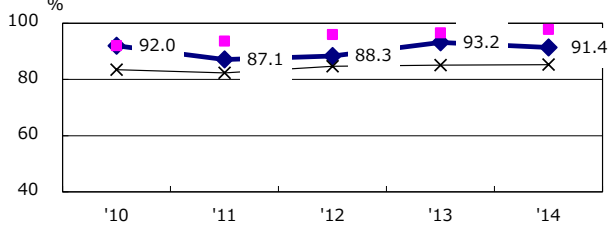
Proportion of cases with total diagnosis delay(> 3 mths) among symptomatic PTB*



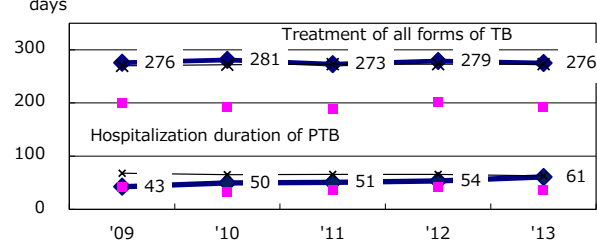
Proportion of TX with HRZ-E/S among all forms of TB cases aged under 80 yrs †



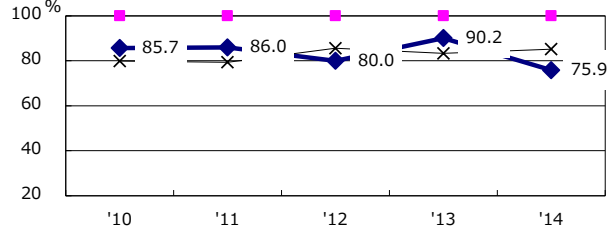
Proportion of Bacteriologically +ve. PTB



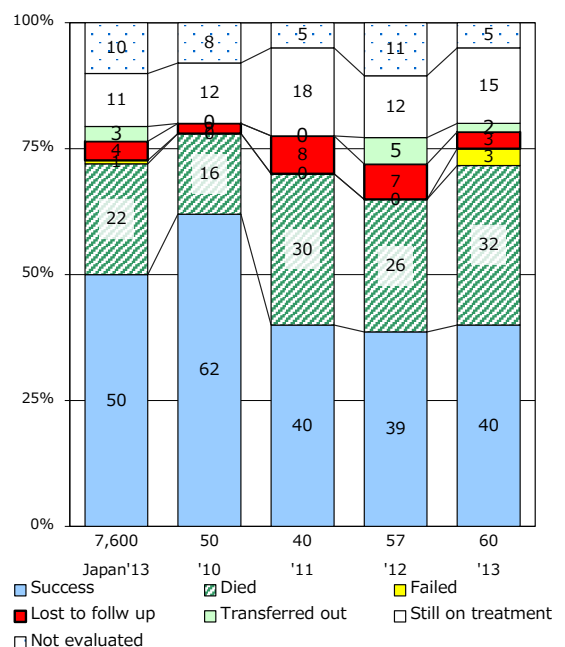
Median duration of treatment of all forms and hospitalization among PTB



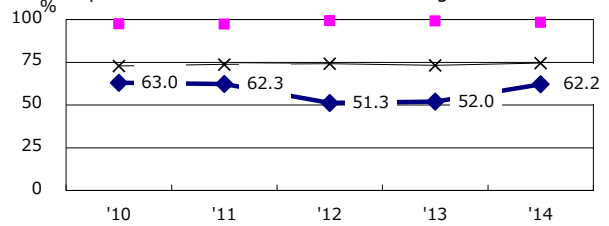
Proportion of culture results obtained among PTB



Treatment outcomes of new sputum smear +ve.TB



Proportion of DST results obtained among culture +ve. PTB



◆ Kagawa ■ Best prefec./city × Japan

PTB : pumonary TB

† Excluding unknown delay(%)	'10	'11	'12	'13	'14
	17.0	10.8	17.2	6.7	17.4

‡ Excluding unknown Tx(%)	'10	'11	'12	'13	'14
	0.0	1.4	5.3	1.3	2.1