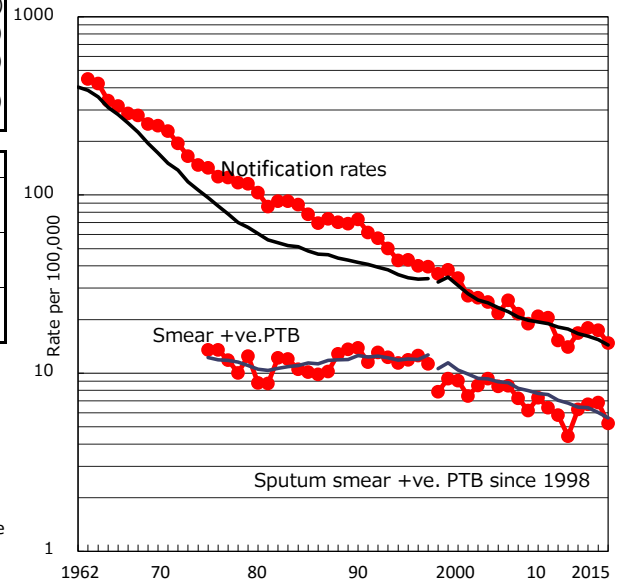


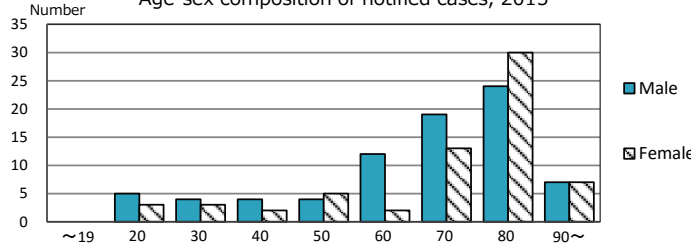
TB statistics in 2015	(Population in Kagawa	976,756)
Among newly notified :		(Japan)
Foreign borns	9	6.3% (6.4%)
TB cases with homeless history	1	0.7% (0.9%)
Male aged 35-59, without job and receiving public assistance	0	0.0% (9.0%)

Trends	'11	'12	'13	'14	'15
Notified cases	139	166	177	171	144
Rate per 100,000 population	14.0	16.8	18.0	17.4	14.7
Sputum smear +ve. PTB	44	62	66	67	51
Rate per 100,000 population	4.4	6.3	6.7	6.8	5.2
Latent Tuberculosis Infection	43	37	30	27	44
Rate per 100,000 population	4.3	3.7	3.0	2.8	4.5

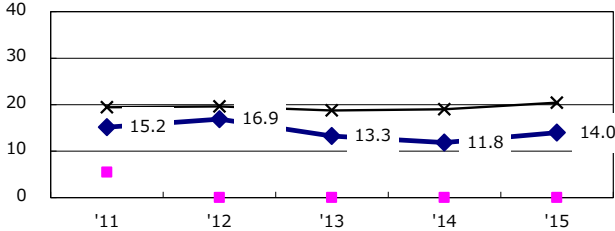
Trends of TB notification rates, all forms and smear +ve. PTB



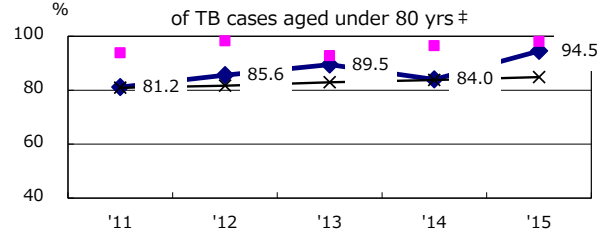
Age-sex composition of notified cases, 2015



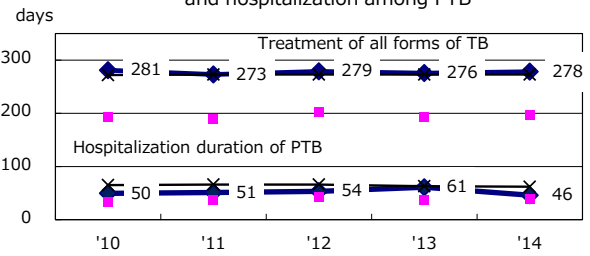
Proportion of cases with total diagnosis delay (> 3 mths) among symptomatic PTB\*



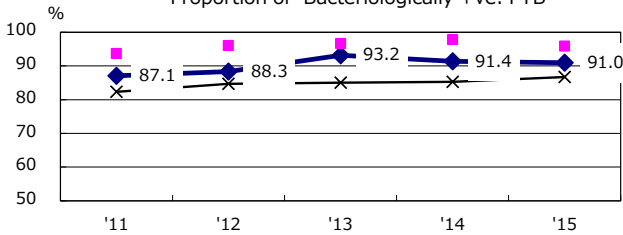
Proportion of TX with HRZ-E/S among all forms of TB cases aged under 80 yrs †



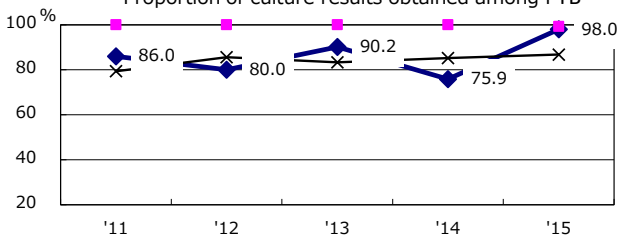
Median duration of treatment of all forms and hospitalization among PTB



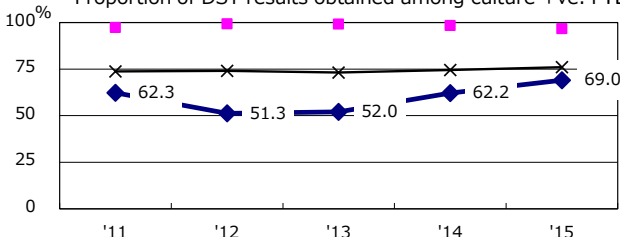
Proportion of Bacteriologically +ve. PTB



Proportion of culture results obtained among PTB



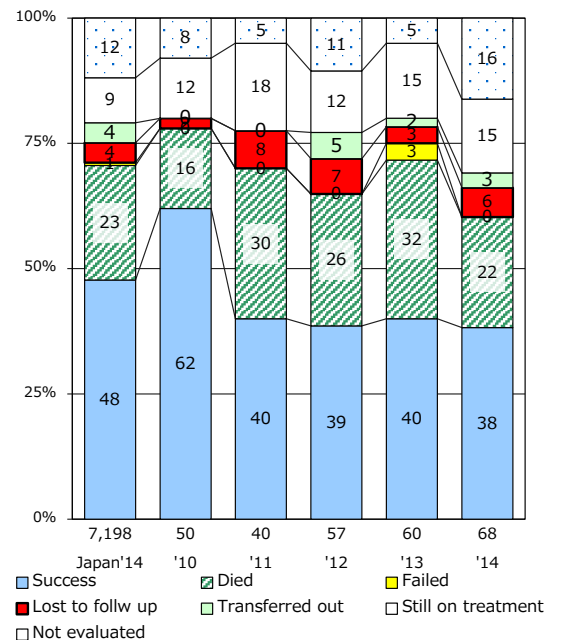
Proportion of DST results obtained among culture +ve. PTB



◆ Kagawa    ■ Best pref./city    × Japan

PTB : pulmonary TB

Treatment outcomes of new sputum smear +ve. TB



† Excluding unknown delay(%)	'11	'12	'13	'14	'15
	10.8	17.2	6.7	17.4	35.1

‡ Excluding unknown Tx(%)	'11	'12	'13	'14	'15
	1.4	5.3	1.3	2.1	3.9