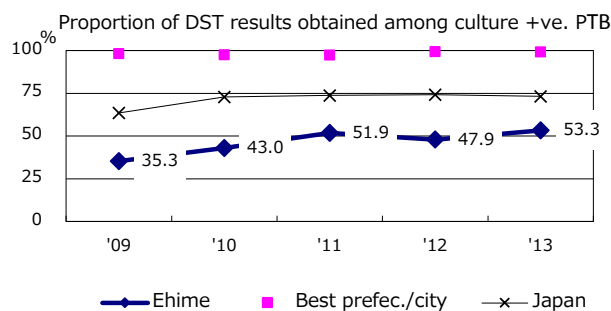
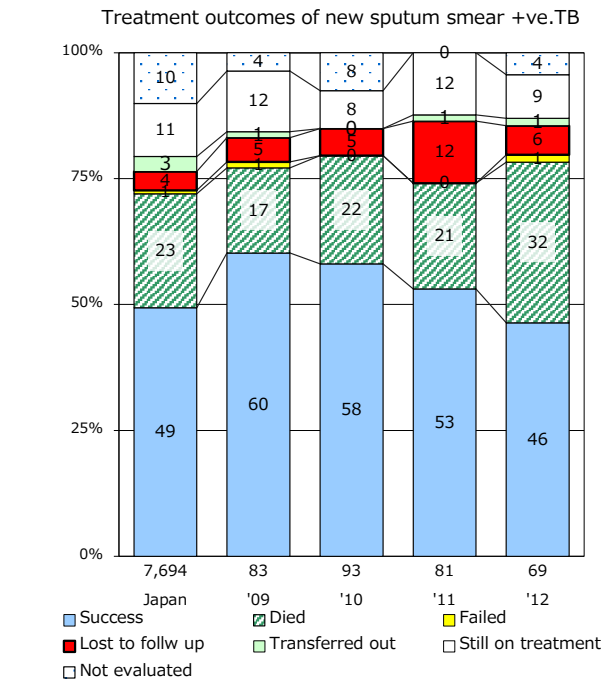
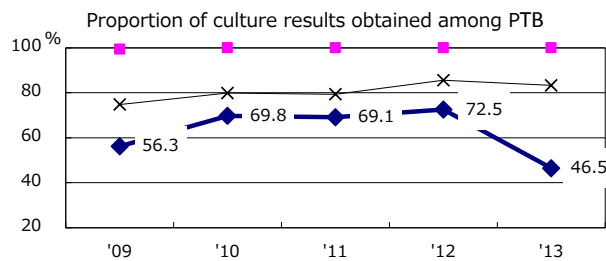
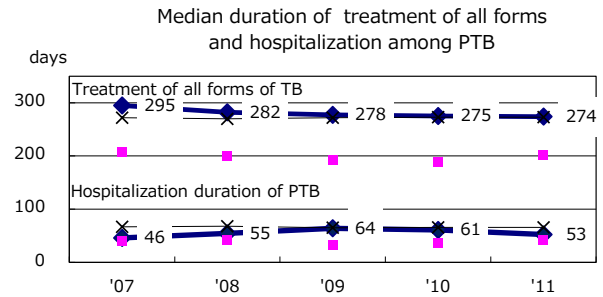
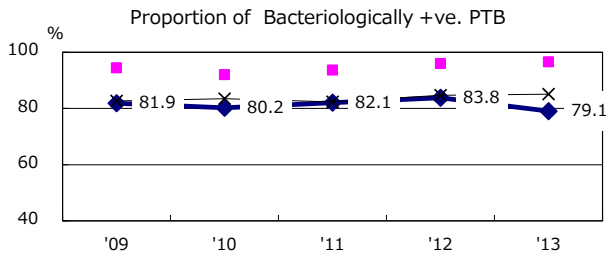
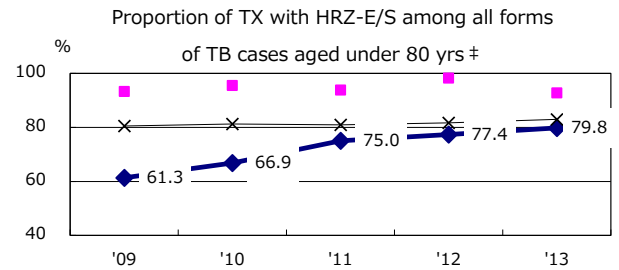
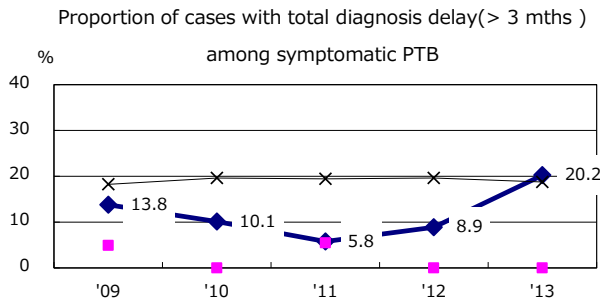
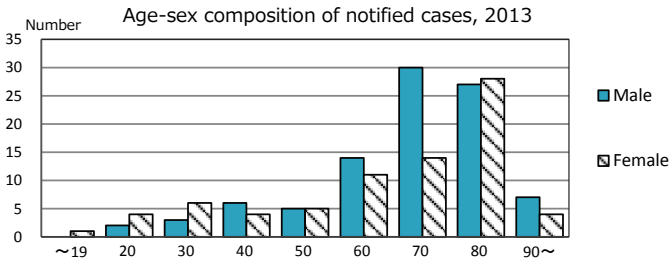
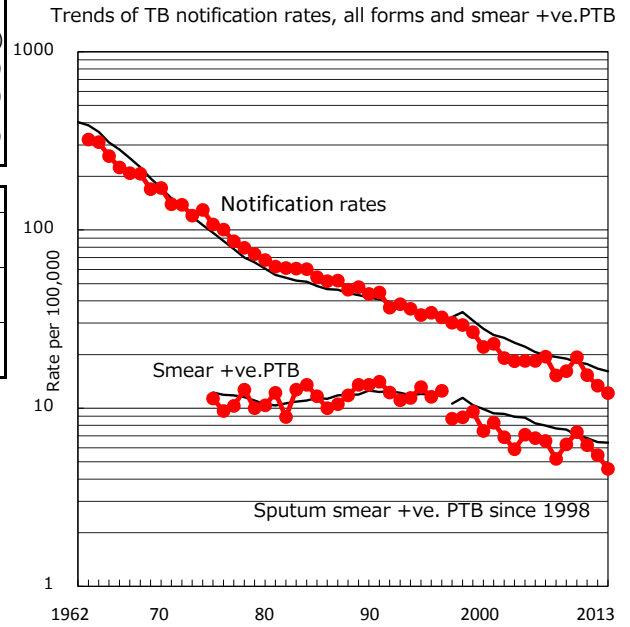


TB statistics in 2013 ( Population in Ehime		1,405,192 )
Among newly registered : (Japan)		
Foreign borns	2	1.2% (5.0%)
TB cases with homeless history	1	0.6% (1.6%)
Male aged 35-59,without job and receiveing public assistance	0	0.0% (10.8%)

Trends	'09	'10	'11	'12	'13
Notified cases	232	276	218	189	171
Rate per 100,000 population	16.2	19.3	15.3	13.4	12.2
Sputum smear +ve. pul.cases	90	105	88	77	64
Rate per 100,000 population	6.3	7.3	6.2	5.4	4.6
Latent Tuberculosis Infection	43	19	58	23	35
Rate per 100,000 population	3.0	1.3	4.1	1.6	2.5



PTB : pumonary TB

† Excluding unknown delay(%)	'09	'10	'11	'12	'13
	31.0	41.5	11.9	16.7	11.9

‡ Excluding unknown Tx(%)	'09	'10	'11	'12	'13
	0.7	1.7	1.4	1.9	1.0