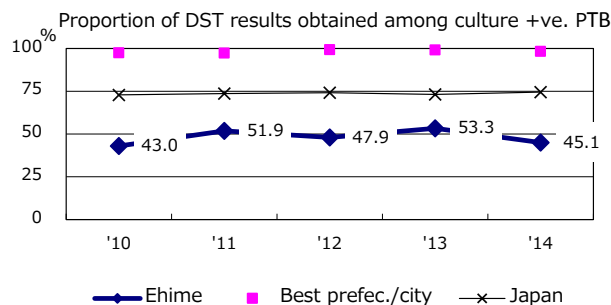
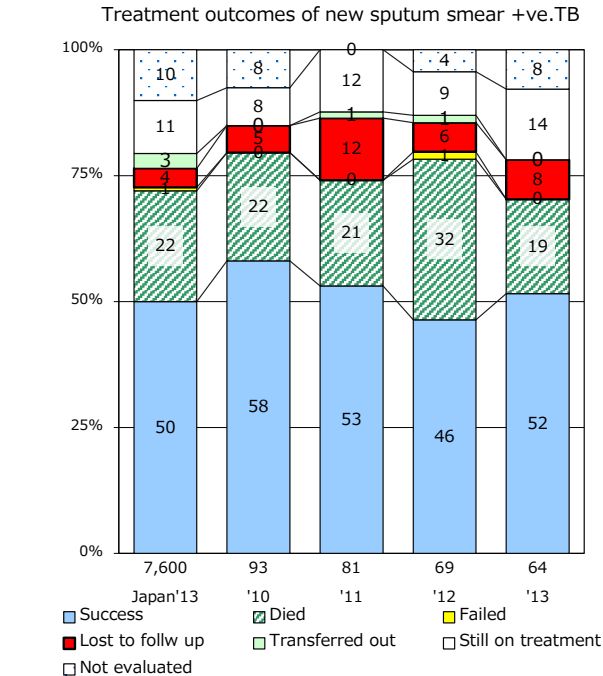
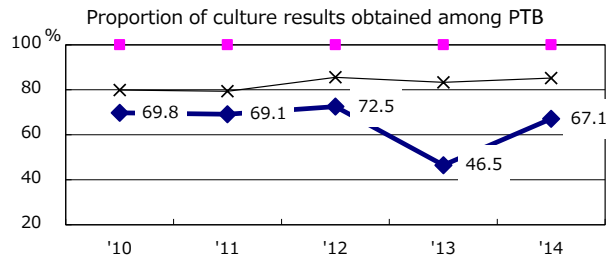
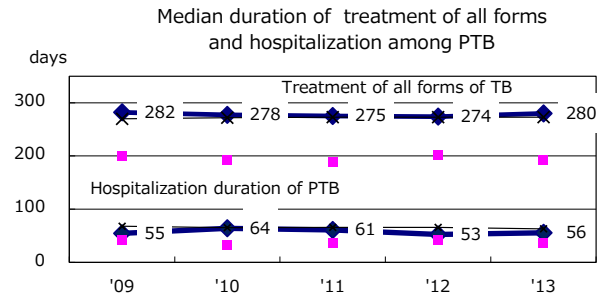
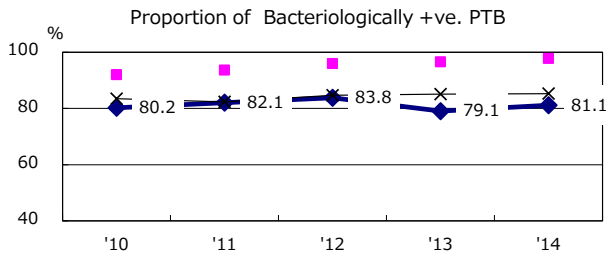
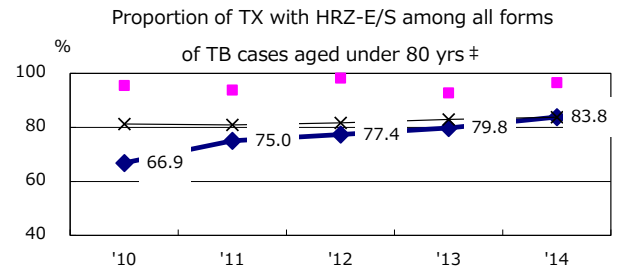
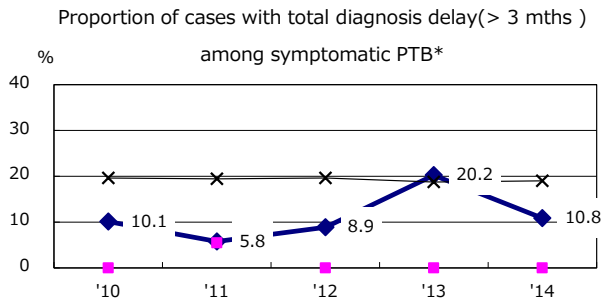
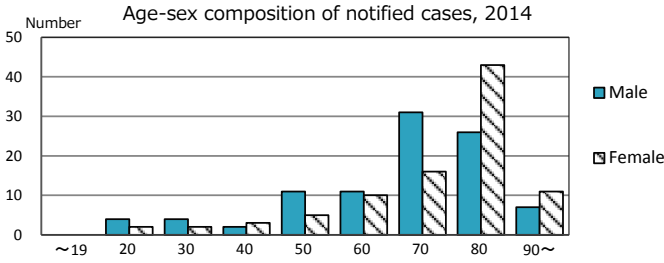
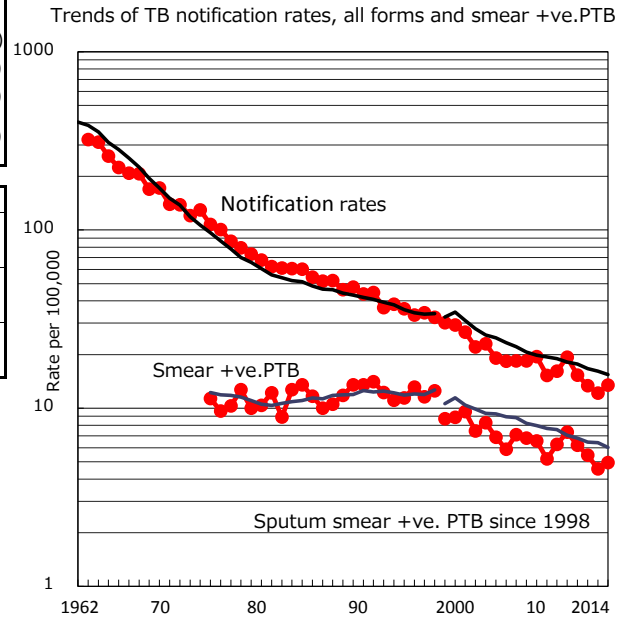


TB statistics in 2014 (Population in Ehime 1,395,483)	
Among newly registered : (Japan)	
Foreign borns	3 1.6% (5.6%)
TB cases with homeless history	1 0.5% (1.1%)
Male aged 35-59,without job and receiveing public assistance	2 11.8% (8.0%)

Trends	'10	'11	'12	'13	'14
Notified cases	276	218	189	171	188
Rate per 100,000 population	19.3	15.3	13.4	12.2	13.5
Sputum smear +ve. pul.cases	105	88	77	64	69
Rate per 100,000 population	7.3	6.2	5.4	4.6	4.9
Latent Tuberculosis Infection	19	58	23	35	46
Rate per 100,000 population	1.3	4.1	1.6	2.5	3.3



PTB : pumonary TB

† Excluding unknown delay(%)	'10	'11	'12	'13	'14
	41.5	11.9	16.7	11.9	21.7

‡ Excluding unknown Tx(%)	'10	'11	'12	'13	'14
	1.7	1.4	1.9	1.0	2.0