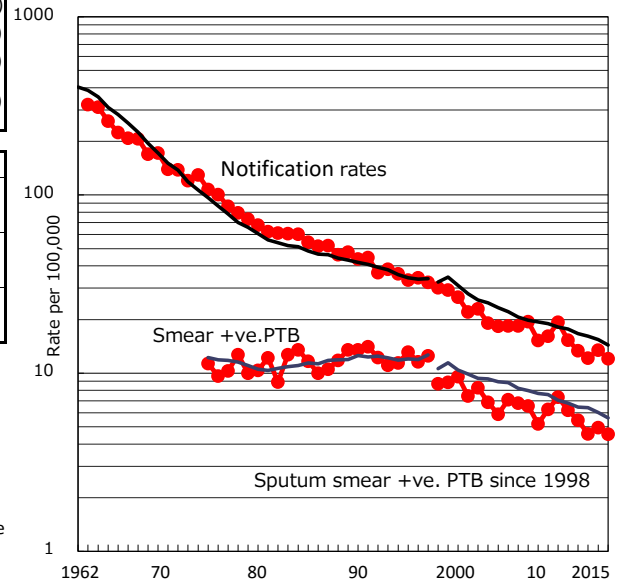


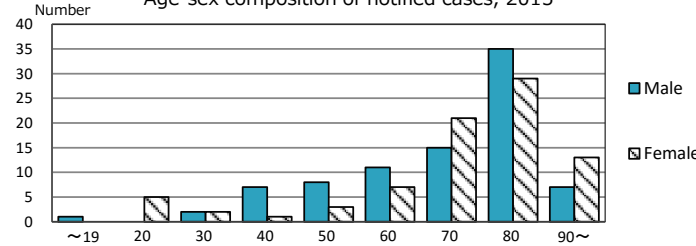
TB statistics in 2015 Among newly notified : Foreign borns TB cases with homeless history Male aged 35-59, without job and receiving public assistance	(Population in Ehime (Japan) 5 3.0% (6.4%) 2 1.2% (0.9%) 2 11.8% (9.0%)	1,385,840)
--	--	-------------

Trends	'11	'12	'13	'14	'15
Notified cases	218	189	171	188	167
Rate per 100,000 population	15.3	13.4	12.2	13.5	12.1
Sputum smear +ve. PTB	88	77	64	69	63
Rate per 100,000 population	6.2	5.4	4.6	4.9	4.5
Latent Tuberculosis Infection	58	23	35	46	42
Rate per 100,000 population	4.1	1.6	2.5	3.3	3.0

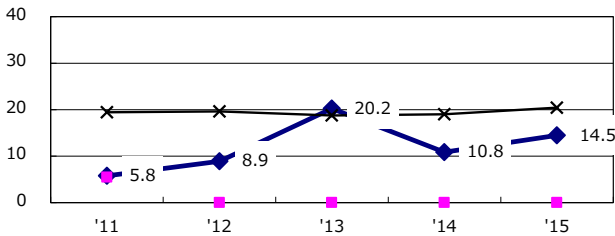
Trends of TB notification rates, all forms and smear +ve. PTB



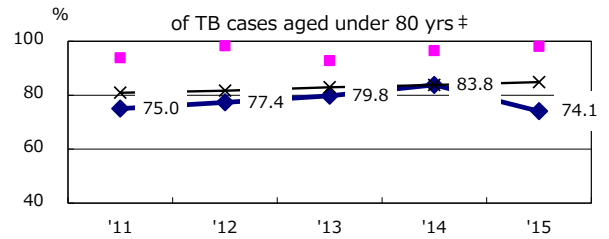
Age-sex composition of notified cases, 2015



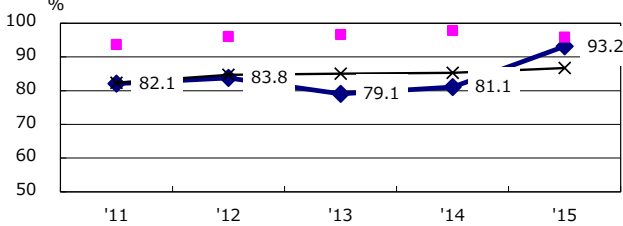
Proportion of cases with total diagnosis delay (> 3 mths) among symptomatic PTB*



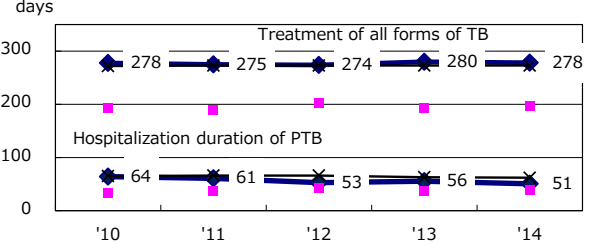
Proportion of TX with HRZ-E/S among all forms of TB cases aged under 80 yrs †



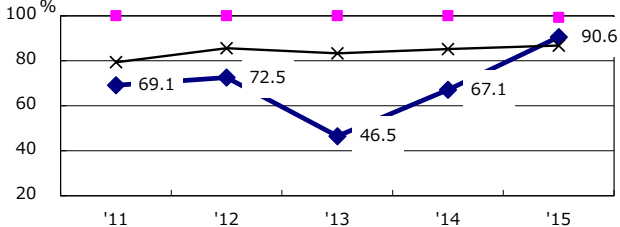
Proportion of Bacteriologically +ve. PTB



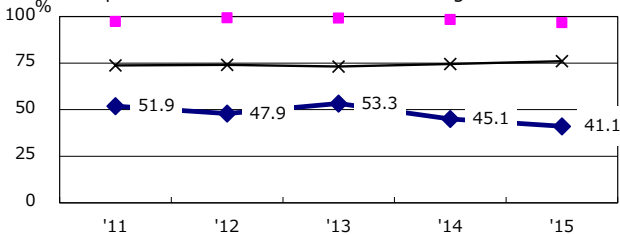
Median duration of treatment of all forms and hospitalization among PTB



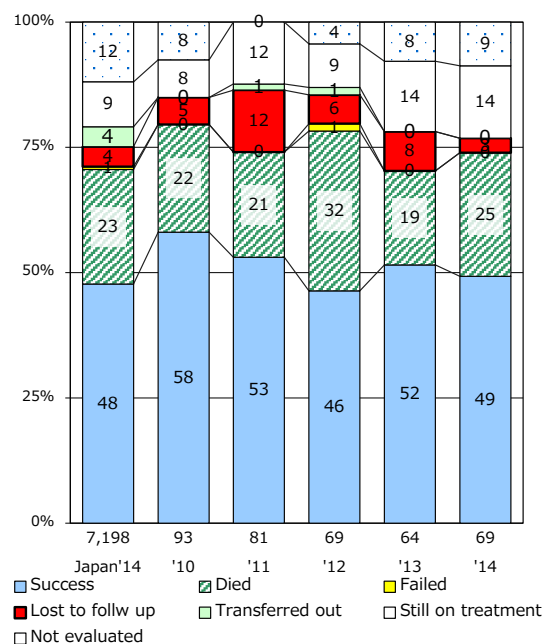
Proportion of culture results obtained among PTB



Proportion of DST results obtained among culture +ve. PTB



Treatment outcomes of new sputum smear +ve. TB



PTB : pulmonary TB

† Excluding unknown delay(%)	'11	'12	'13	'14	'15
	11.9	16.7	11.9	21.7	16.5

‡ Excluding unknown Tx(%)	'11	'12	'13	'14	'15
	1.4	1.9	1.0	2.0	2.4