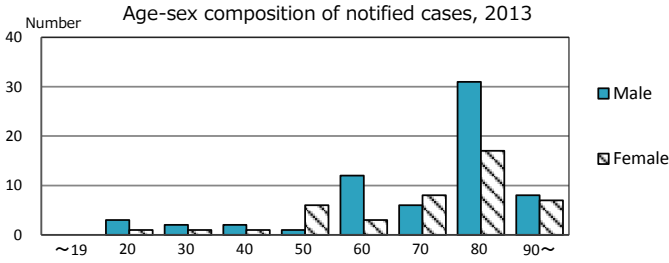
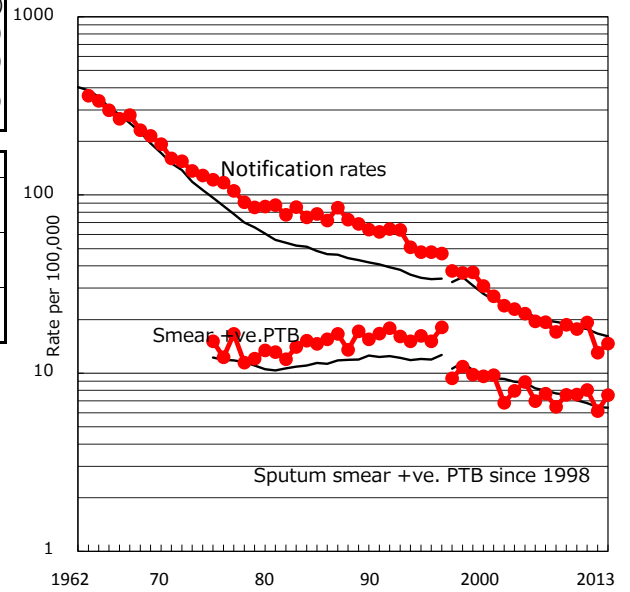


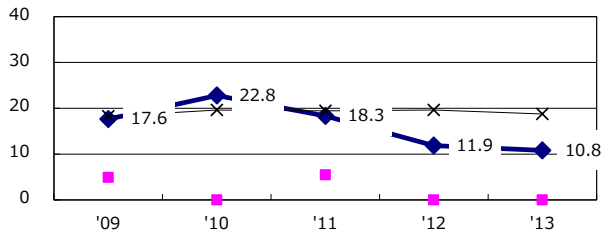
TB statistics in 2013 (Population in Kochi 744,921)	
Among newly registered : (Japan)	
Foreign borns	1 0.9% (5.0%)
TB cases with homeless history	0 0.0% (1.6%)
Male aged 35-59, without job and receiving public assistance	0 0.0% (10.8%)

Trends	'09	'10	'11	'12	'13
Notified cases	143	135	146	98	109
Rate per 100,000 population	18.7	17.7	19.2	13.0	14.6
Sputum smear +ve. pul.cases	58	58	61	46	56
Rate per 100,000 population	7.6	7.6	8.0	6.1	7.5
Latent Tuberculosis Infection	16	13	32	27	10
Rate per 100,000 population	2.1	1.7	4.2	3.6	1.3

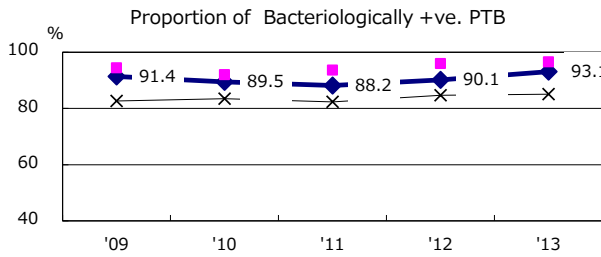
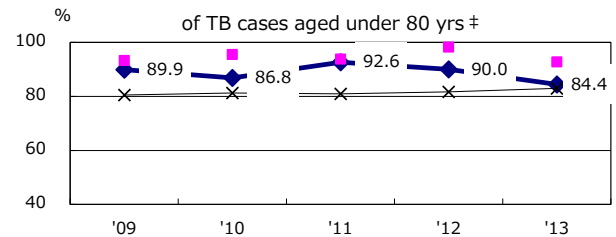
Trends of TB notification rates, all forms and smear +ve.PTB



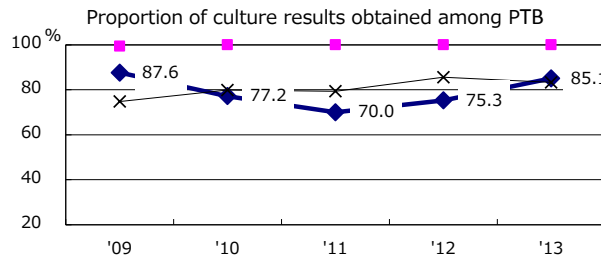
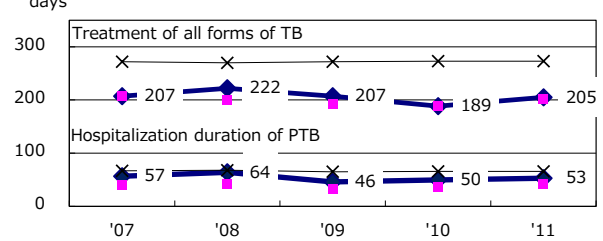
Proportion of cases with total diagnosis delay(> 3 mths) among symptomatic PTB



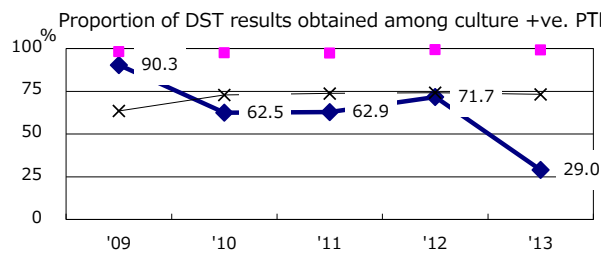
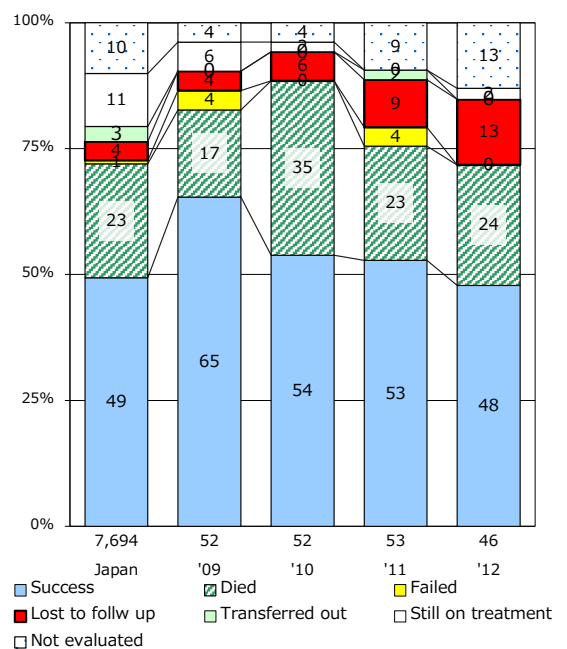
Proportion of TX with HRZ-E/S among all forms of TB cases aged under 80 yrs †



Median duration of treatment of all forms and hospitalization among PTB



Treatment outcomes of new sputum smear +ve.TB



PTB : pumonary TB

† Excluding unknown delay(%)	'09	'10	'11	'12	'13
	3.4	10.2	28.6	10.6	51.3

‡ Excluding unknown Tx(%)	'09	'10	'11	'12	'13
	0.0	1.3	1.4	2.0	2.2