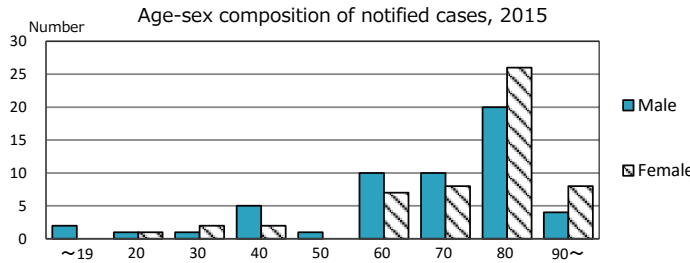
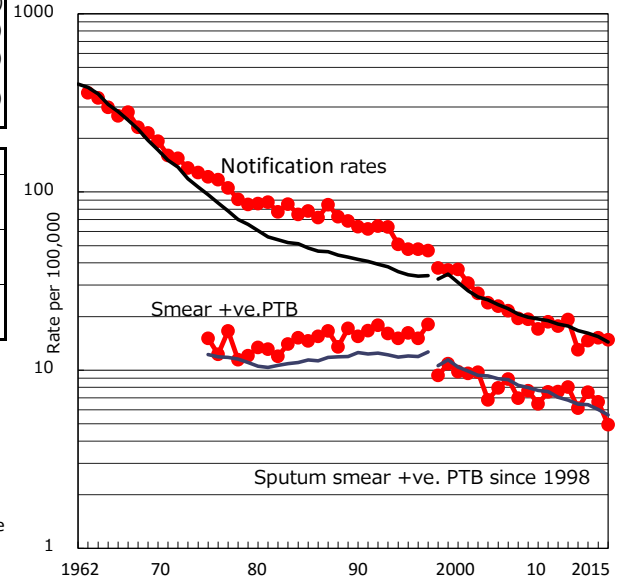


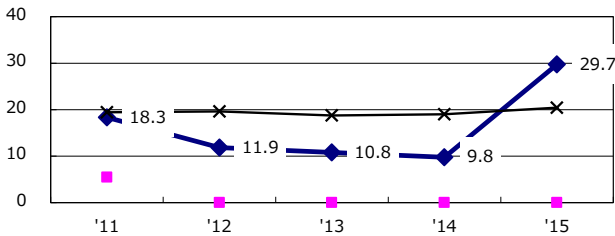
TB statistics in 2015 (Population in Kochi 728,461)	
Among newly notified :	(Japan)
Foreign borns	3 2.8% (6.4%)
TB cases with homeless history	0 0.0% (0.9%)
Male aged 35-59, without job and receiving public assistance	1 14.3% (9.0%)

Trends	'11	'12	'13	'14	'15
Notified cases	146	98	109	112	108
Rate per 100,000 population	19.2	13.0	14.6	15.2	14.8
Sputum smear +ve. PTB	61	46	56	49	36
Rate per 100,000 population	8.0	6.1	7.5	6.6	4.9
Latent Tuberculosis Infection	32	27	10	18	9
Rate per 100,000 population	4.2	3.6	1.3	2.4	1.2

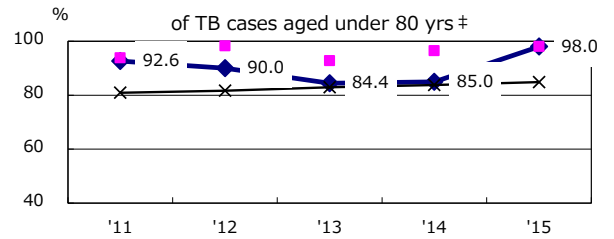
Trends of TB notification rates, all forms and smear +ve. PTB



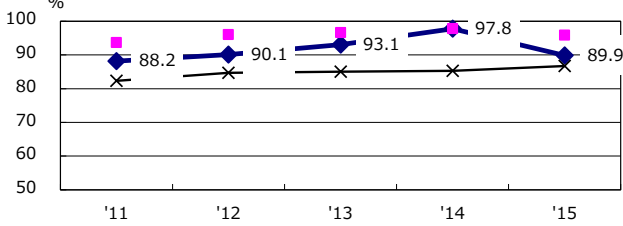
Proportion of cases with total diagnosis delay (> 3 mths) among symptomatic PTB*



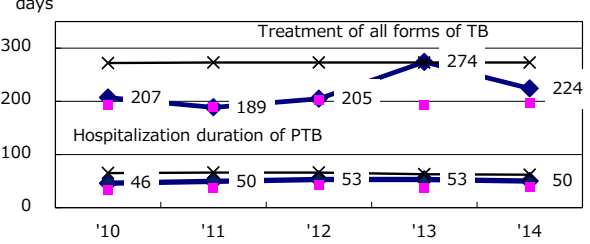
Proportion of TX with HRZ-E/S among all forms of TB cases aged under 80 yrs †



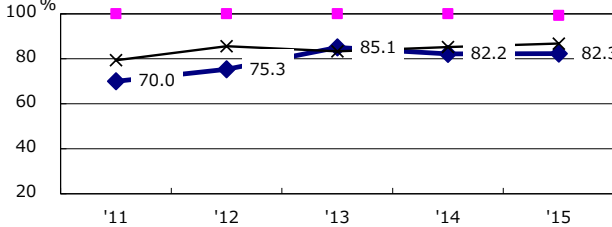
Proportion of Bacteriologically +ve. PTB



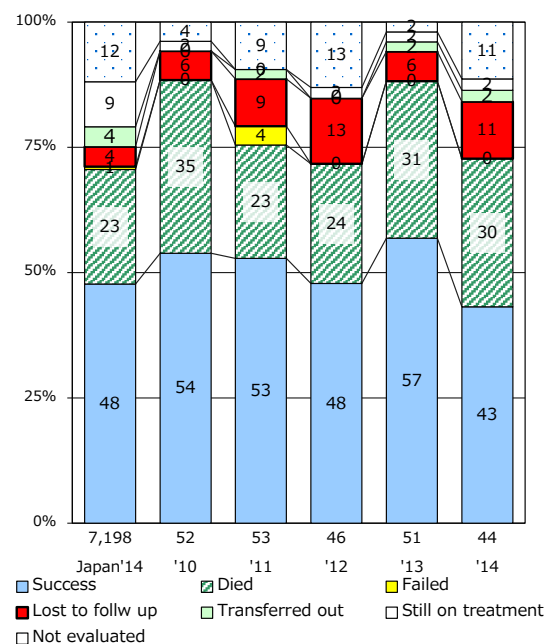
Median duration of treatment of all forms and hospitalization among PTB



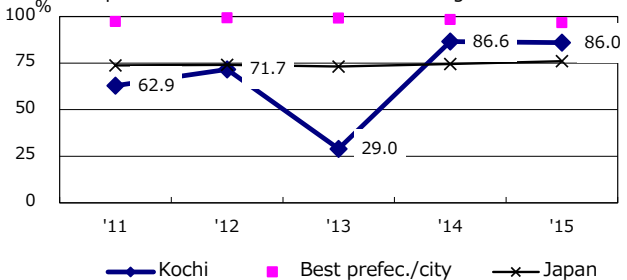
Proportion of culture results obtained among PTB



Treatment outcomes of new sputum smear +ve. TB



Proportion of DST results obtained among culture +ve. PTB



PTB : pulmonary TB

† Excluding unknown delay(%)	'11	'12	'13	'14	'15
	28.6	10.6	51.3	45.3	39.3

‡ Excluding unknown Tx(%)	'11	'12	'13	'14	'15
	1.4	2.0	2.2	1.6	0.0