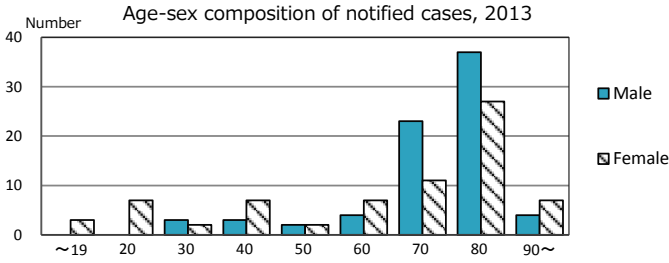
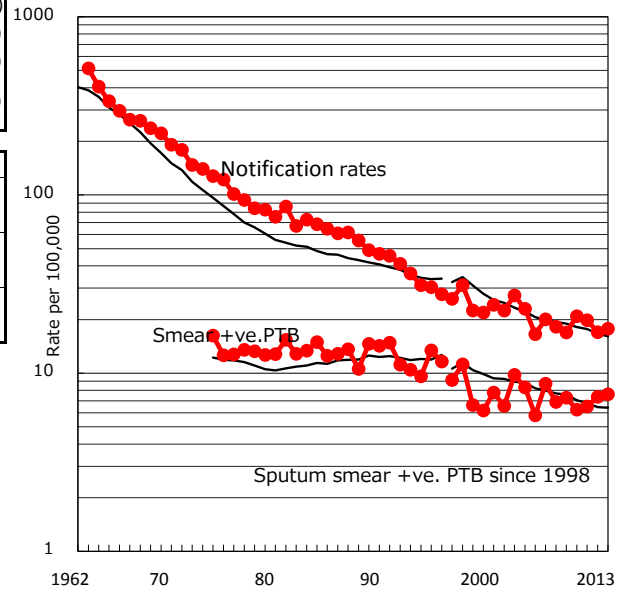


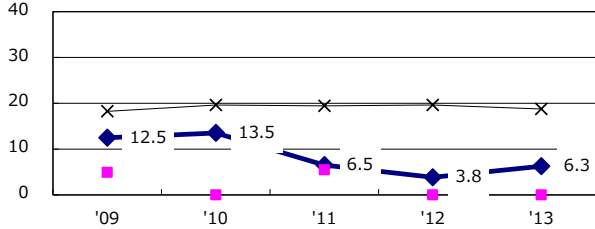
TB statistics in 2013 (Population in Saga 839,670)	
Among newly registered : (Japan)	
Foreign borns	1 0.7% (5.0%)
TB cases with homeless history	0 0.0% (1.6%)
Male aged 35-59, without job and receiving public assistance	0 0.0% (10.8%)

Trends	'09	'10	'11	'12	'13
Notified cases	144	177	168	143	149
Rate per 100,000 population	16.9	20.8	19.8	17.0	17.7
Sputum smear +ve. pul.cases	62	53	55	62	64
Rate per 100,000 population	7.3	6.2	6.5	7.4	7.6
Latent Tuberculosis Infection	29	21	178	35	44
Rate per 100,000 population	3.4	2.5	21.0	4.1	5.2

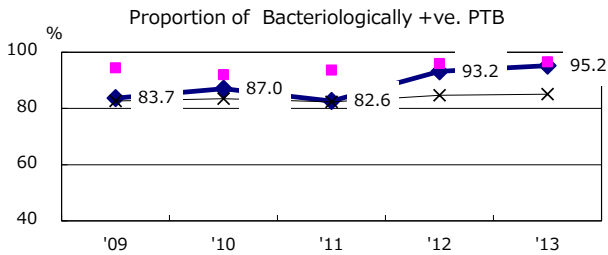
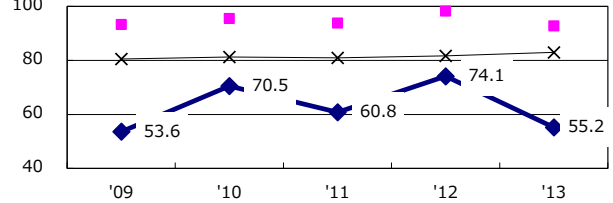
Trends of TB notification rates, all forms and smear +ve.PTB



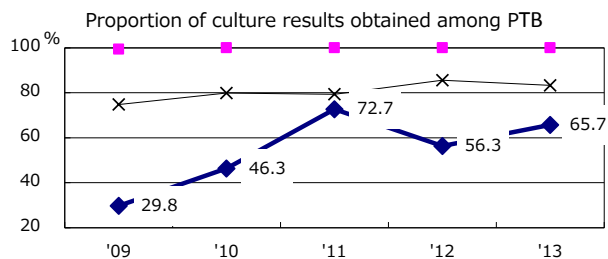
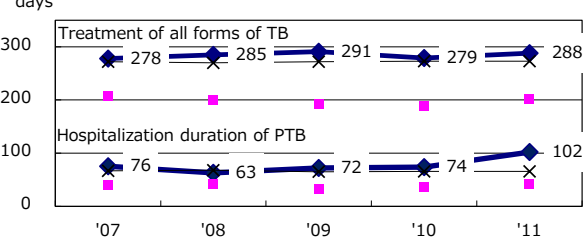
Proportion of cases with total diagnosis delay(> 3 mths) among symptomatic PTB



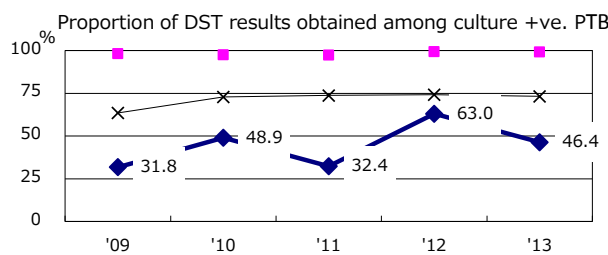
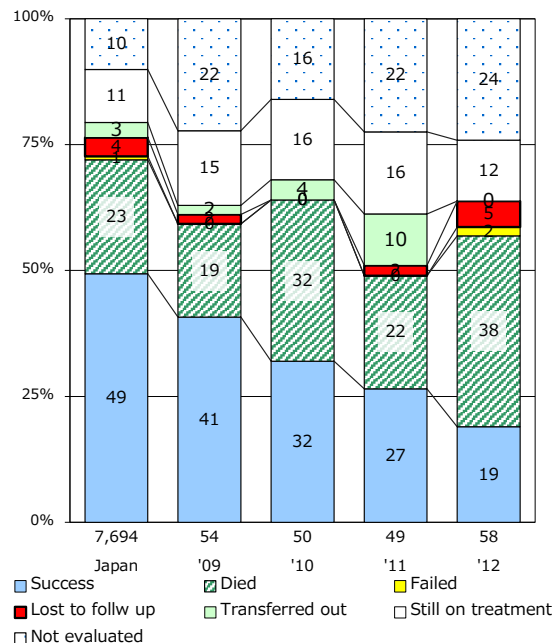
Proportion of TX with HRZ-E/S among all forms of TB cases aged under 80 yrs †



Median duration of treatment of all forms and hospitalization among PTB



Treatment outcomes of new sputum smear +ve.TB



PTB : pumonary TB

† Excluding unknown delay(%)	'09	'10	'11	'12	'13
	79.2	58.9	37.0	66.2	57.3

‡ Excluding unknown Tx(%)	'09	'10	'11	'12	'13
	9.7	9.5	13.4	7.9	9.5