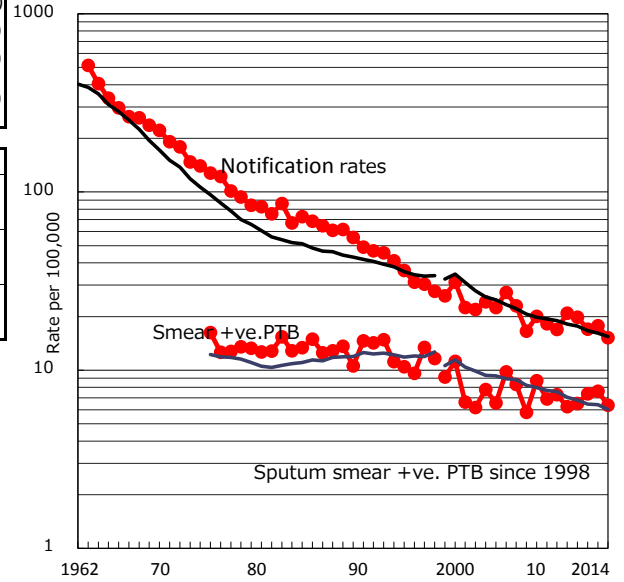


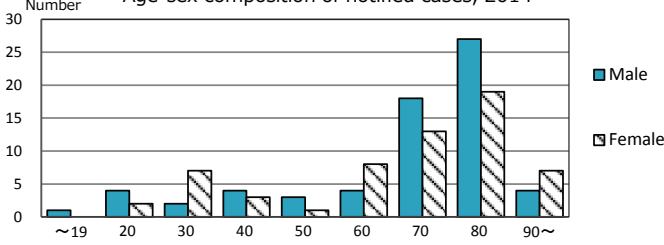
TB statistics in 2014 (Population in Saga 835,040)	
Among newly registered : (Japan)	
Foreign borns	6 4.7% (5.6%)
TB cases with homeless history	0 0.0% (1.1%)
Male aged 35-59, without job and receiving public assistance	0 0.0% (8.0%)

Trends	'10	'11	'12	'13	'14
Notified cases	177	168	143	149	127
Rate per 100,000 population	20.8	19.8	17.0	17.7	15.2
Sputum smear +ve. pul.cases	53	55	62	64	53
Rate per 100,000 population	6.2	6.5	7.4	7.6	6.3
Latent Tuberculosis Infection	21	178	35	44	39
Rate per 100,000 population	2.5	21.0	4.1	5.2	4.7

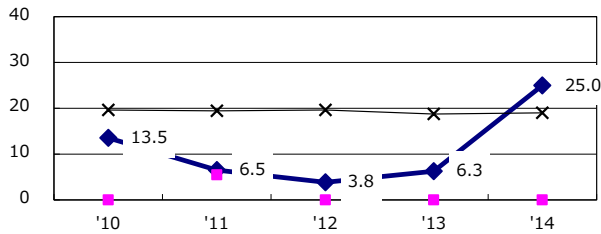
Trends of TB notification rates, all forms and smear +ve.PTB



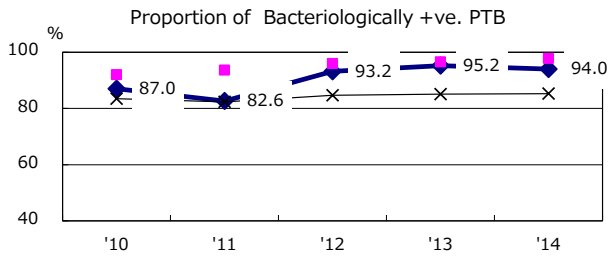
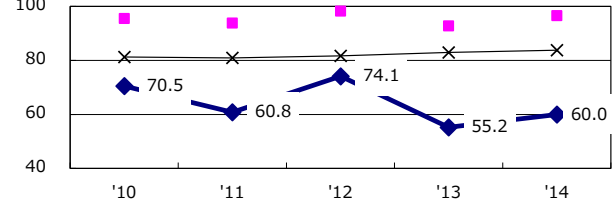
Age-sex composition of notified cases, 2014



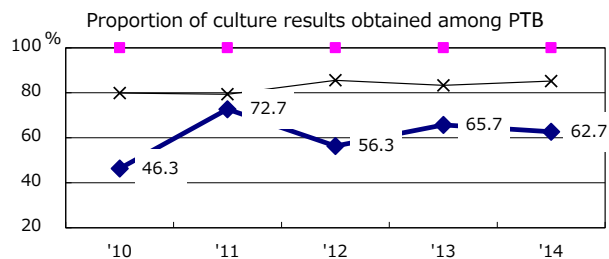
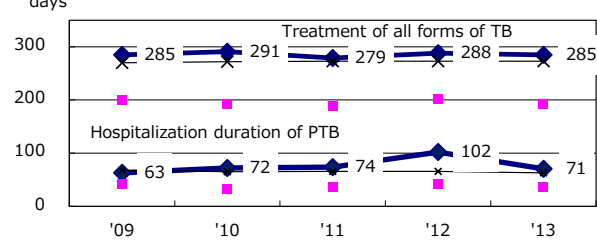
Proportion of cases with total diagnosis delay (> 3 mths) among symptomatic PTB*



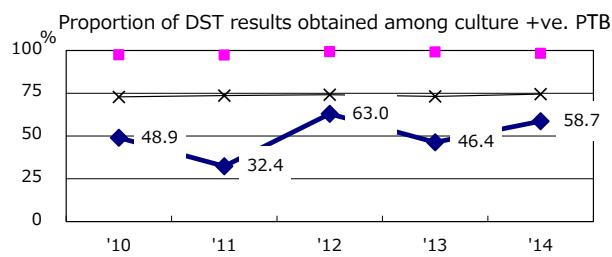
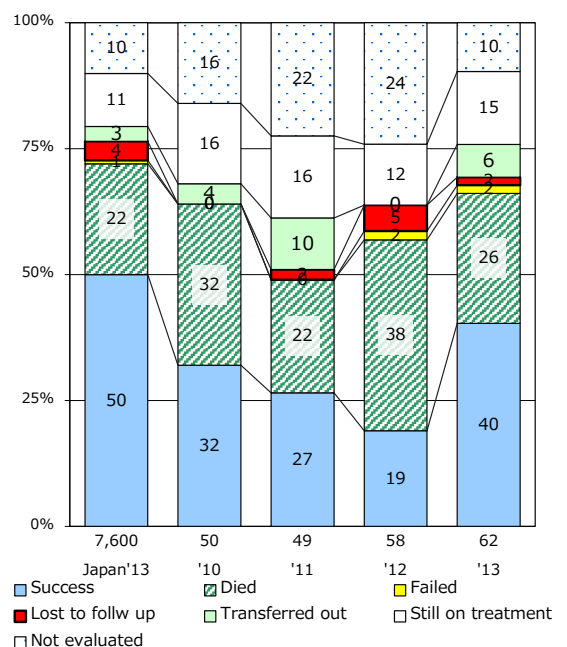
Proportion of TX with HRZ-E/S among all forms of TB cases aged under 80 yrs †



Median duration of treatment of all forms and hospitalization among PTB



Treatment outcomes of new sputum smear +ve.TB



PTB : pumonary TB

† Excluding unknown delay(%)	'10	'11	'12	'13	'14
	58.9	37.0	66.2	57.3	51.7

‡ Excluding unknown Tx(%)	'10	'11	'12	'13	'14
	9.5	13.4	7.9	9.5	7.1