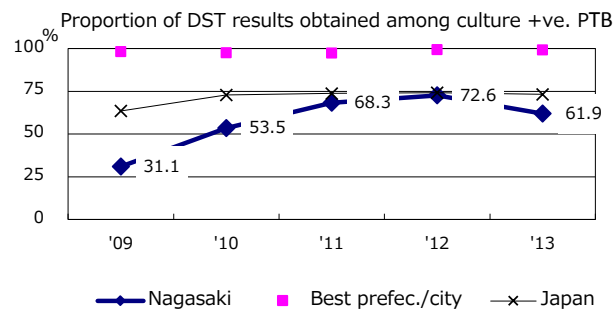
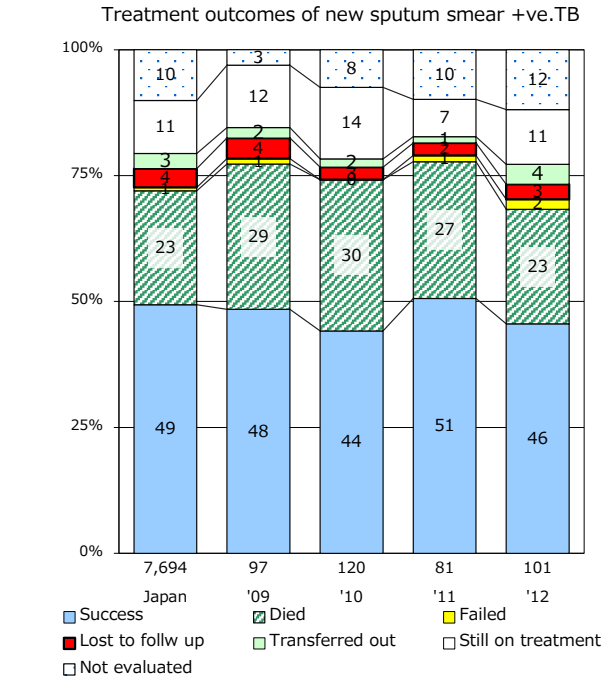
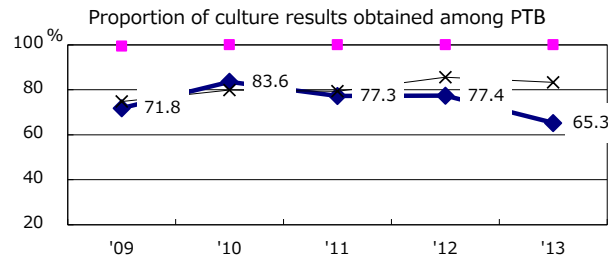
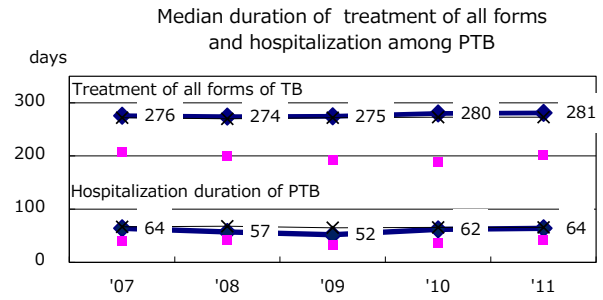
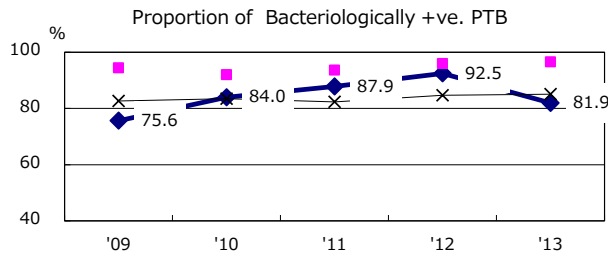
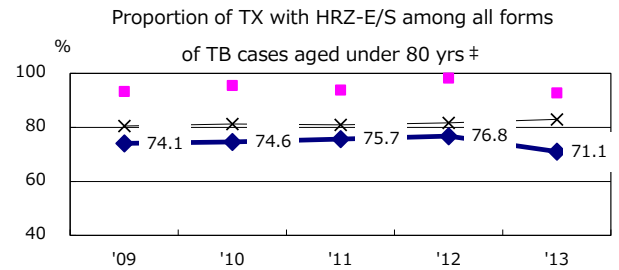
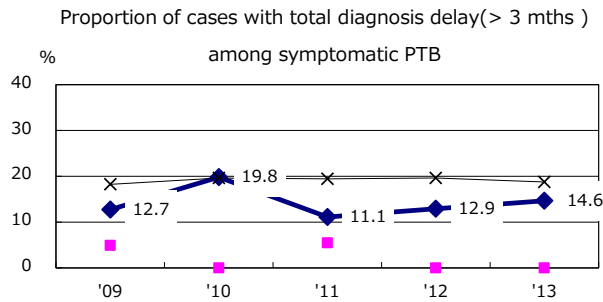
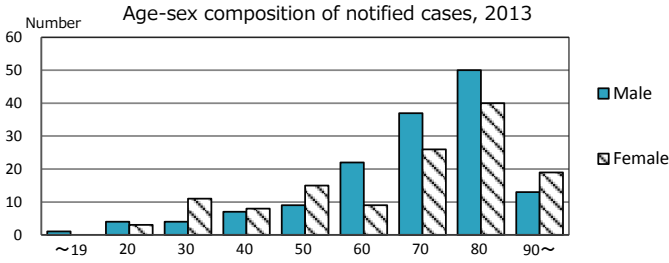
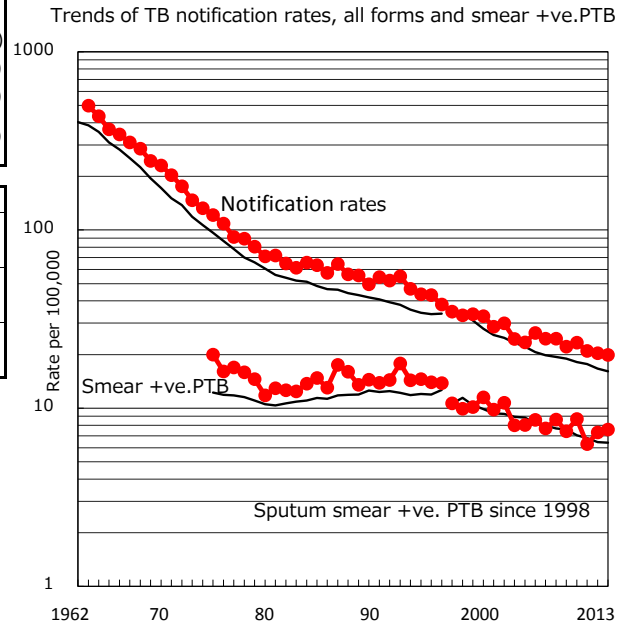


TB statistics in 2013 (Population in Nagasaki		1,396,785)
Among newly registered : (Japan)		
Foreign borns	4	1.4% (5.0%)
TB cases with homeless history	0	0.0% (1.6%)
Male aged 35-59, without job and receiving public assistance	0	0.0% (10.8%)

Trends	'09	'10	'11	'12	'13
Notified cases	316	332	297	286	278
Rate per 100,000 population	22.1	23.3	21.0	20.3	19.9
Sputum smear +ve. pul.cases	106	124	89	103	106
Rate per 100,000 population	7.4	8.7	6.3	7.3	7.6
Latent Tuberculosis Infection	30	33	91	73	102
Rate per 100,000 population	2.1	2.3	6.4	5.2	7.3



PTB : pumonyary TB

† Excluding unknown delay(%)	'09	'10	'11	'12	'13
	31.9	49.2	50.6	42.9	51.5

‡ Excluding unknown Tx(%)	'09	'10	'11	'12	'13
	1.0	1.1	0.7	0.0	2.6