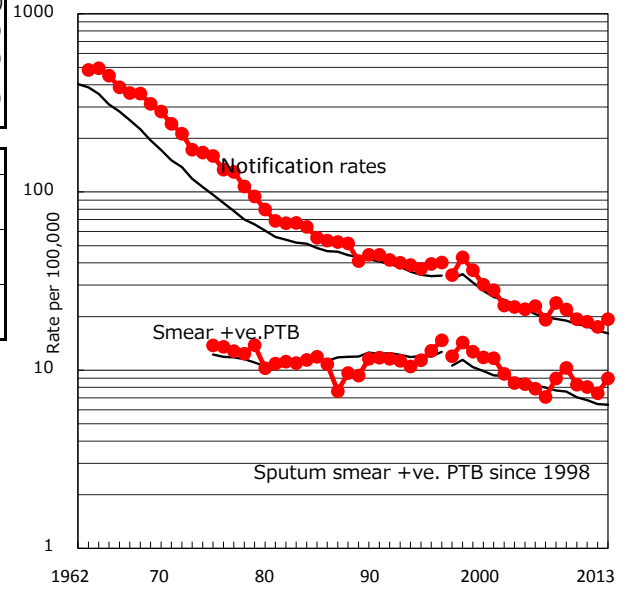


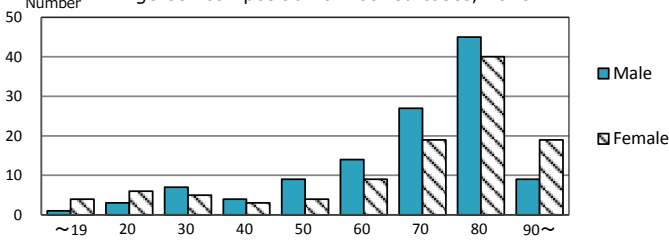
TB statistics in 2013 (Population in Oita		1,178,476)
Among newly registered : (Japan)		
Foreign borns	11	4.8% (5.0%)
TB cases with homeless history	1	0.4% (1.6%)
Male aged 35-59,without job and receiveing public assistance	2	10.0% (10.8%)

Trends	'09	'10	'11	'12	'13
Notified cases	262	231	223	207	228
Rate per 100,000 population	21.9	19.3	18.7	17.5	19.3
Sputum smear +ve. pul.cases	123	99	96	88	106
Rate per 100,000 population	10.3	8.3	8.1	7.4	9.0
Latent Tuberculosis Infection	16	31	85	92	57
Rate per 100,000 population	1.3	2.6	7.1	7.8	4.8

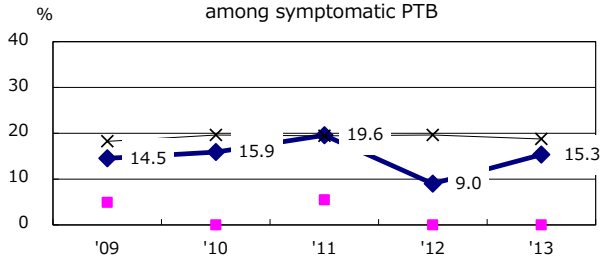
Trends of TB notification rates, all forms and smear +ve.PTB



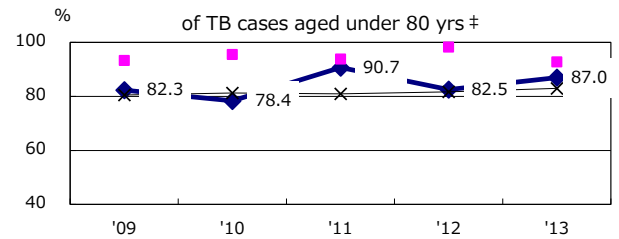
Age-sex composition of notified cases, 2013



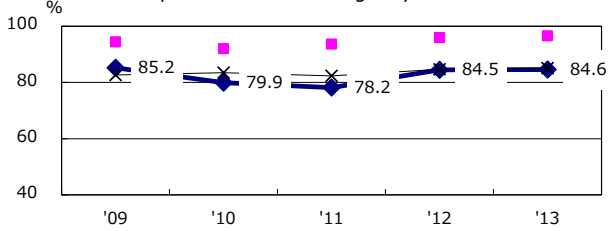
Proportion of cases with total diagnosis delay(> 3 mths) among symptomatic PTB



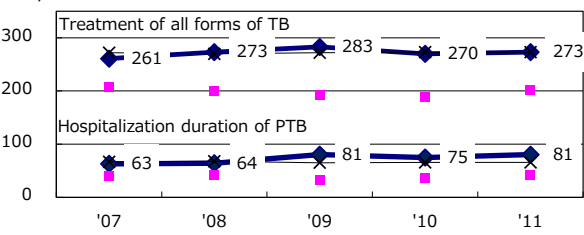
Proportion of TX with HRZ-E/S among all forms of TB cases aged under 80 yrs †



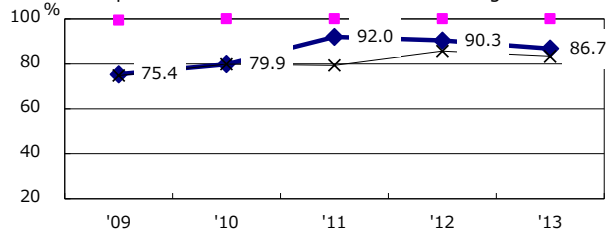
Proportion of Bacteriologically +ve. PTB



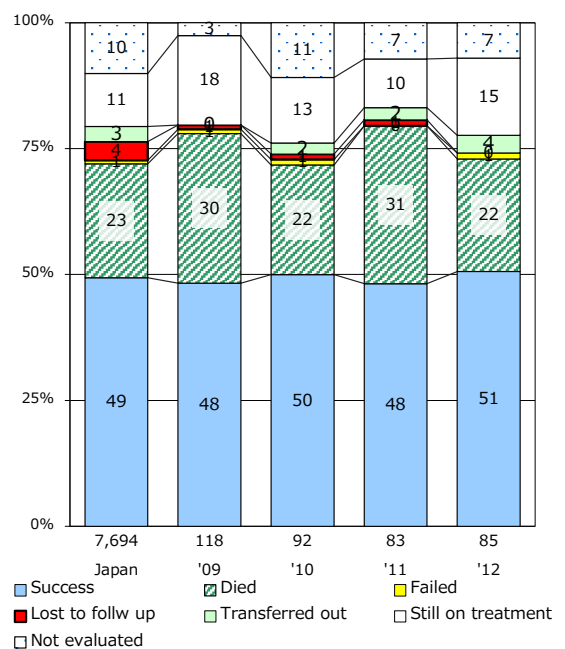
Median duration of treatment of all forms and hospitalization among PTB



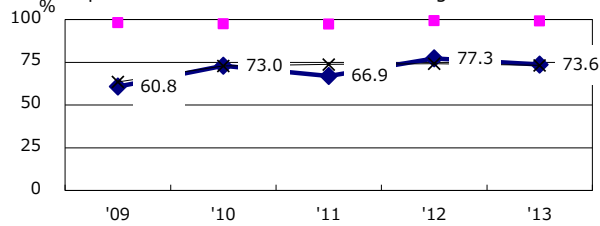
Proportion of culture results obtained among PTB



Treatment outcomes of new sputum smear +ve.TB



Proportion of DST results obtained among culture +ve. PTB



PTB : pumonary TB

† Excluding unknown delay(%)	'09	'10	'11	'12	'13
	31.2	21.3	26.4	17.4	24.5

‡ Excluding unknown Tx(%)	'09	'10	'11	'12	'13
	1.3	0.7	0.0	0.8	0.0