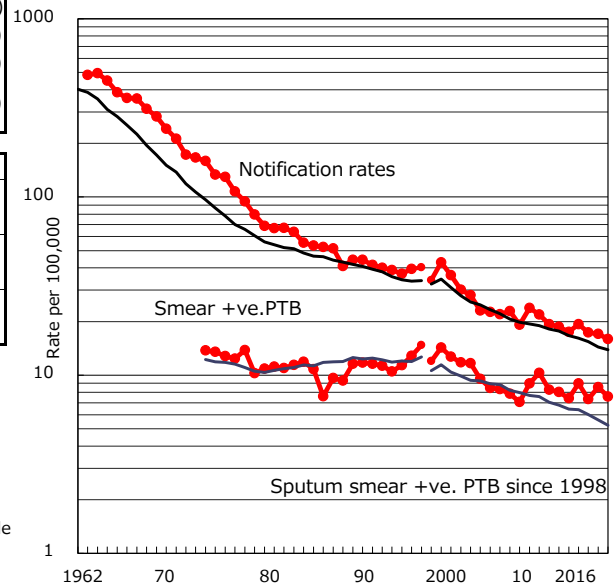


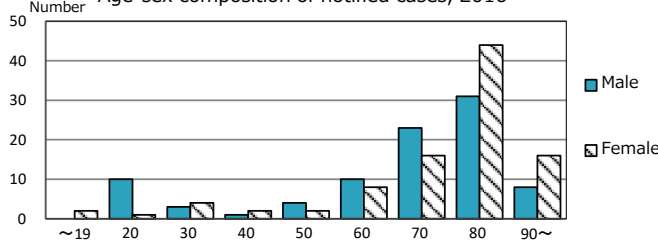
TB statistics in 2016 ( Population in Oita		1,159,741 )
Among newly notified : (Japan)		
Foreign borns	11	5.9% (7.6%)
TB cases with homeless history	0	0.0% (1.0%)
Male aged 35-59,without job and receiving public assistance	1	12.5% (7.7%)

Trends	'12	'13	'14	'15	2016
Notified cases	207	228	203	199	185
Rate per 100,000 population	17.5	19.3	17.3	17.1	16.0
Sputum smear +ve. PTB	88	106	86	100	88
Rate per 100,000 population	7.4	9.0	7.3	8.6	7.6
Latent Tuberculosis Infection	92	57	49	114	113
Rate per 100,000 population	7.8	4.8	4.2	9.8	9.7

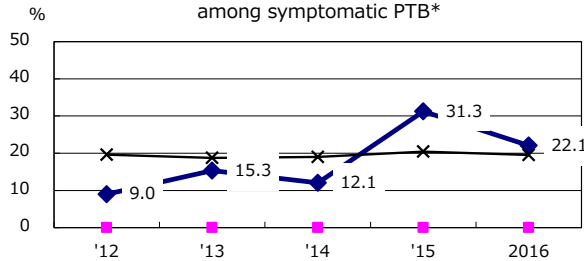
Trends of TB notification rates, all forms and smear +ve.PTB



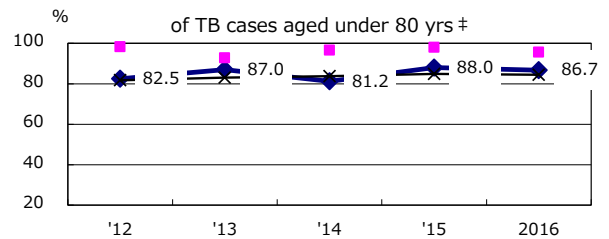
Age-sex composition of notified cases, 2016



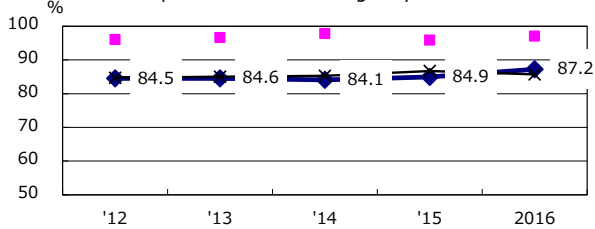
Proportion of cases with total diagnosis delay(> 3 mths) among symptomatic PTB\*



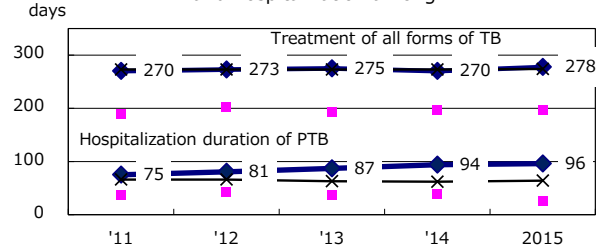
Proportion of TX with HRZ-E/S among all forms of TB cases aged under 80 yrs †



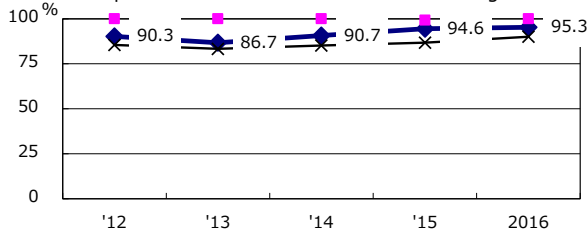
Proportion of Bacteriologically +ve. PTB



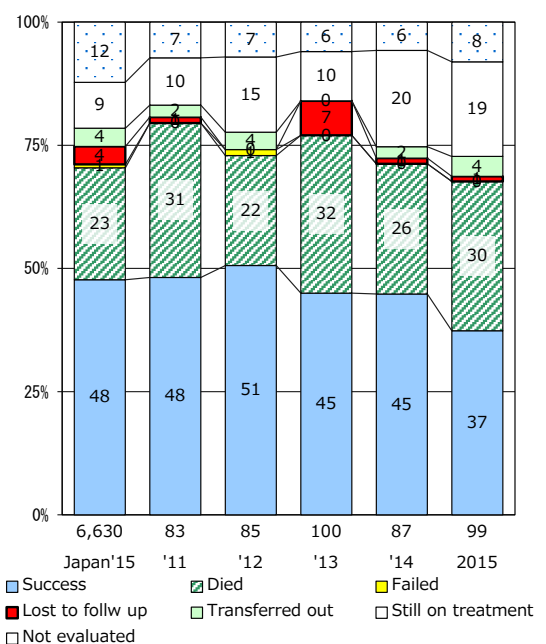
Median duration of treatment of all forms and hospitalization among PTB



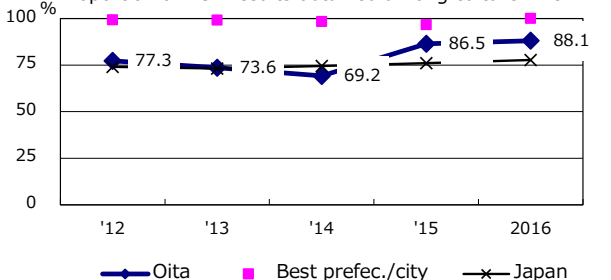
Proportion of culture results obtained among PTB



Treatment outcomes of new sputum smear +ve.TB



Proportion of DST results obtained among culture +ve. PTB



PTB : pulmonary TB

† Excluding unknown delay(%)	'12	'13	'14	'15	2016
	17.4	24.5	51.3	24.4	31.9

‡ Excluding unknown Tx(%)	'12	'13	'14	'15	2016
	0.8	0.0	1.9	1.0	3.5