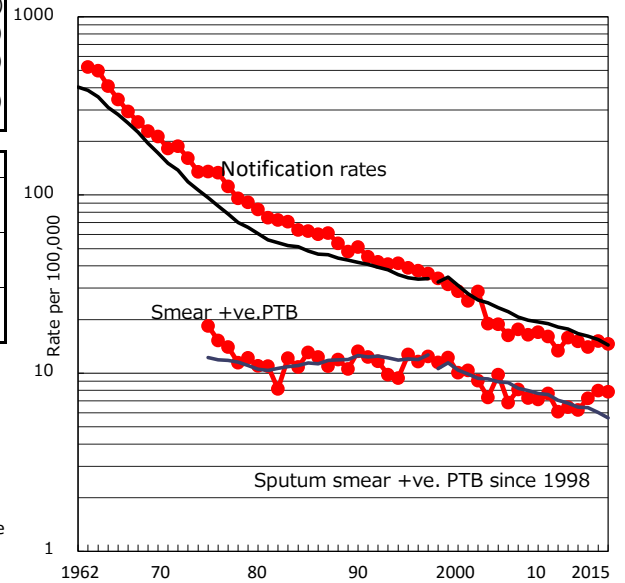


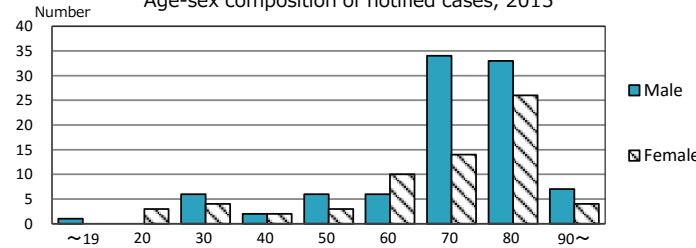
| | |
|--|---------------|
| TB statistics in 2015 (Population in Miyazaki 1,104,377) | |
| Among newly notified : | (Japan) |
| Foreign borns | 3 1.9% (6.4%) |
| TB cases with homeless history | 0 0.0% (0.9%) |
| Male aged 35-59, without job and receiving public assistance | 1 7.1% (9.0%) |

| Trends | '11 | '12 | '13 | '14 | '15 |
|-------------------------------|------|------|------|------|------|
| Notified cases | 179 | 170 | 157 | 169 | 161 |
| Rate per 100,000 population | 15.8 | 15.1 | 14.0 | 15.2 | 14.6 |
| Sputum smear +ve. PTB | 73 | 70 | 81 | 89 | 87 |
| Rate per 100,000 population | 6.5 | 6.2 | 7.2 | 8.0 | 7.9 |
| Latent Tuberculosis Infection | 59 | 73 | 65 | 65 | 41 |
| Rate per 100,000 population | 5.2 | 6.5 | 5.8 | 5.8 | 3.7 |

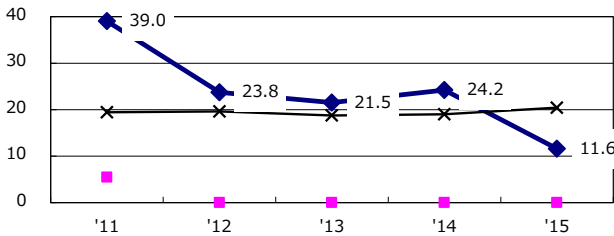
Trends of TB notification rates, all forms and smear +ve. PTB



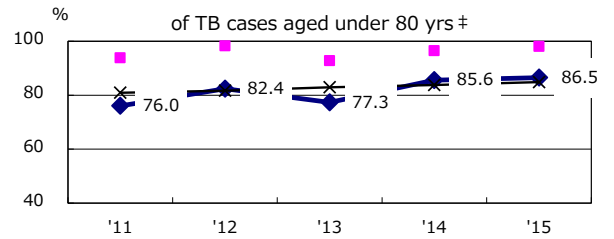
Age-sex composition of notified cases, 2015



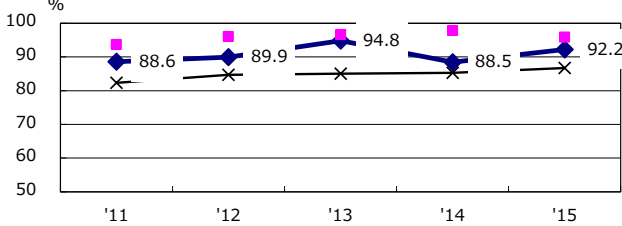
Proportion of cases with total diagnosis delay (> 3 mths) among symptomatic PTB*



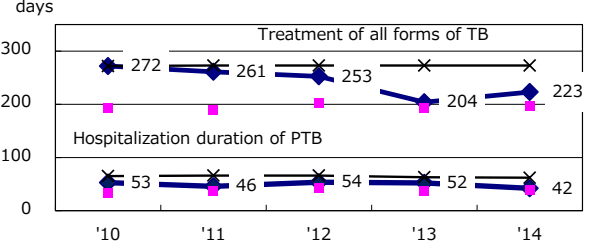
Proportion of TX with HRZ-E/S among all forms of TB cases aged under 80 yrs †



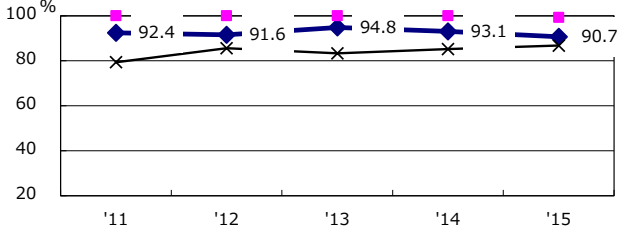
Proportion of Bacteriologically +ve. PTB



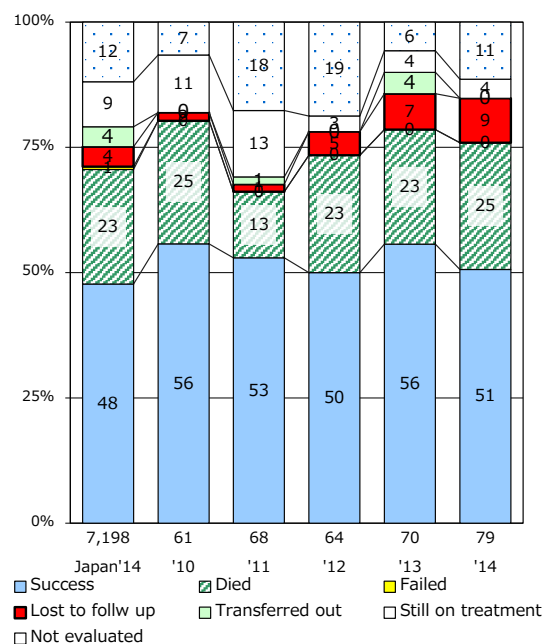
Median duration of treatment of all forms and hospitalization among PTB



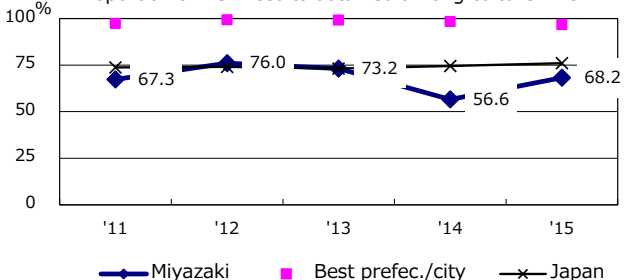
Proportion of culture results obtained among PTB



Treatment outcomes of new sputum smear +ve. TB



Proportion of DST results obtained among culture +ve. PTB



PTB : pulmonary TB

| | | | | | |
|------------------------------|------|------|------|------|------|
| † Excluding unknown delay(%) | '11 | '12 | '13 | '14 | '15 |
| | 60.6 | 20.8 | 27.8 | 36.1 | 28.9 |

| | | | | | |
|---------------------------|-----|-----|-----|-----|-----|
| ‡ Excluding unknown Tx(%) | '11 | '12 | '13 | '14 | '15 |
| | 1.0 | 3.2 | 5.1 | 6.3 | 2.2 |