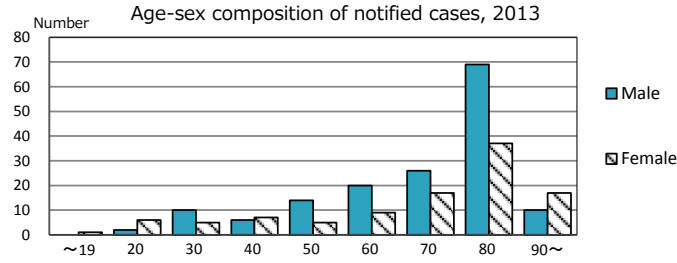
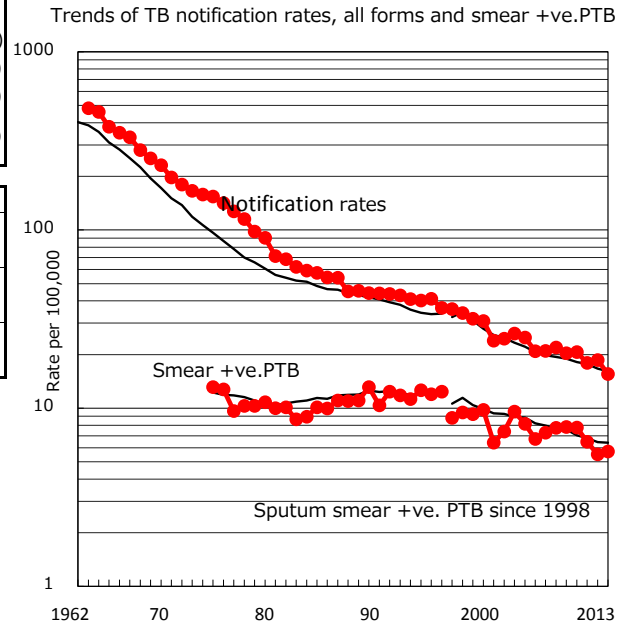
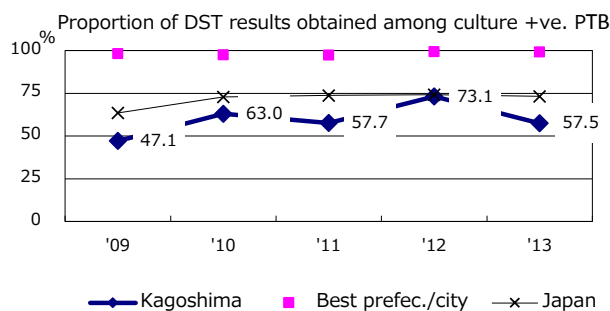
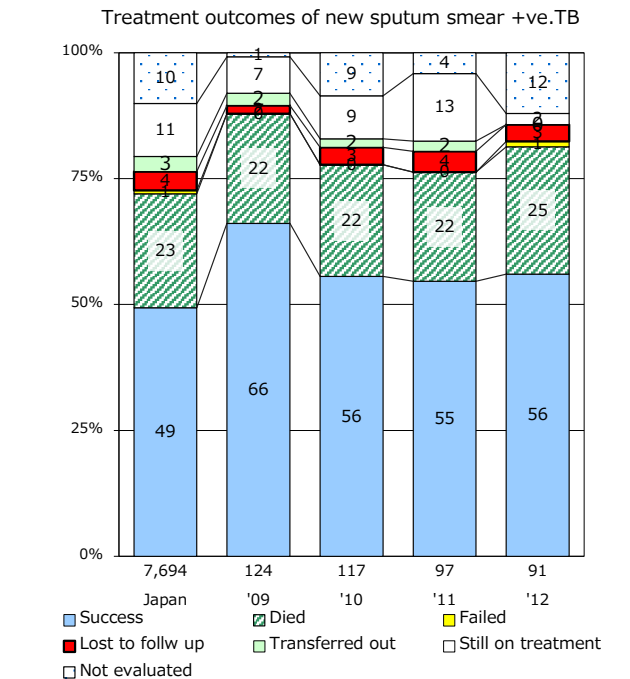
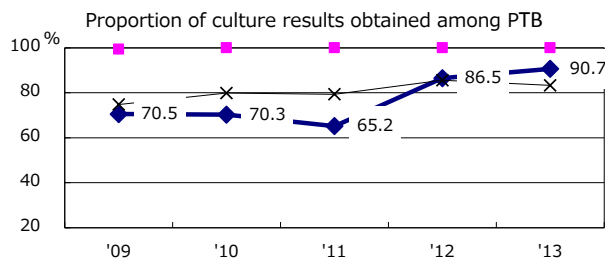
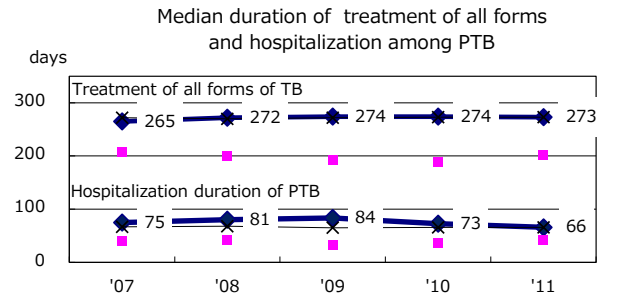
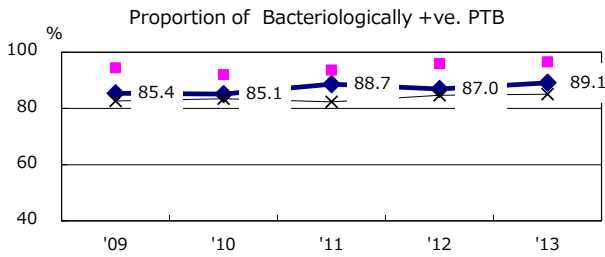
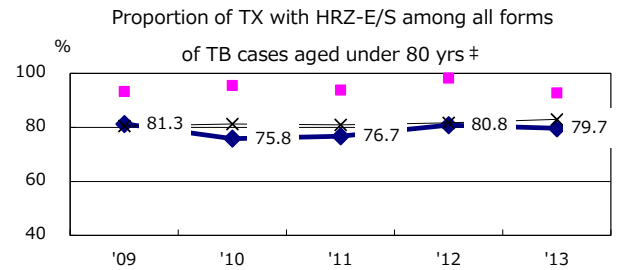
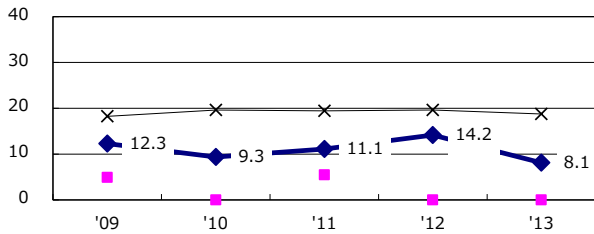


TB statistics in 2013 (Population in Kagoshima 1,679,619)	
Among newly registered :	(Japan)
Foreign borns	5 1.9% (5.0%)
TB cases with homeless history	0 0.0% (1.6%)
Male aged 35-59,without job and receiveing public assistance	1 3.3% (10.8%)

Trends	'09	'10	'11	'12	'13
Notified cases	347	352	305	314	261
Rate per 100,000 population	20.3	20.6	18.0	18.6	15.5
Sputum smear +ve. pul.cases	134	133	110	93	96
Rate per 100,000 population	7.8	7.8	6.5	5.5	5.7
Latent Tuberculosis Infection	42	41	71	48	48
Rate per 100,000 population	2.5	2.4	4.2	2.8	2.9



Proportion of cases with total diagnosis delay(> 3 mths) among symptomatic PTB



PTB : pumonary TB

† Excluding unknown delay(%)	'09	'10	'11	'12	'13
	43.8	47.0	46.2	36.5	29.7

‡ Excluding unknown Tx(%)	'09	'10	'11	'12	'13
	0.0	1.4	2.6	2.7	3.9