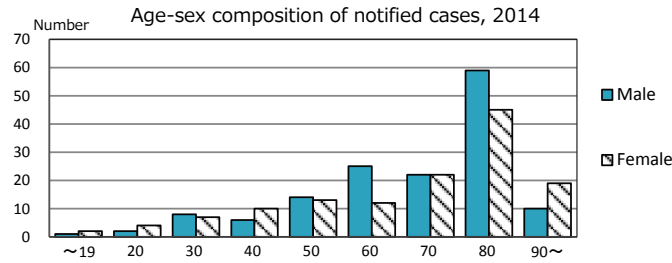
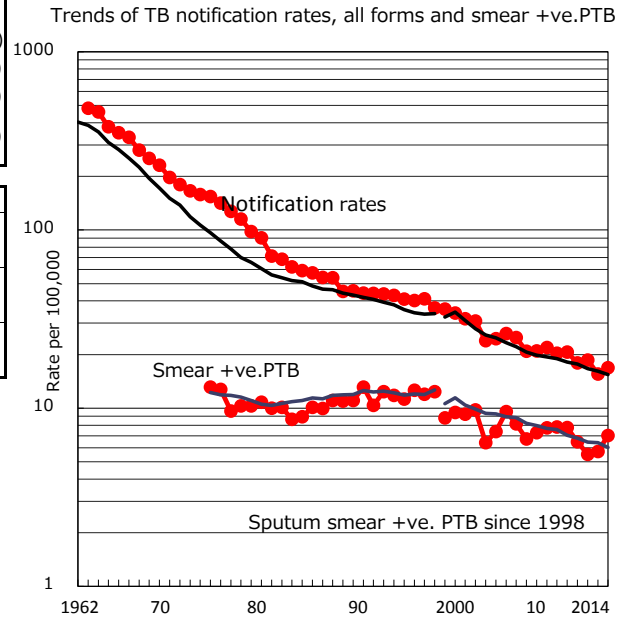
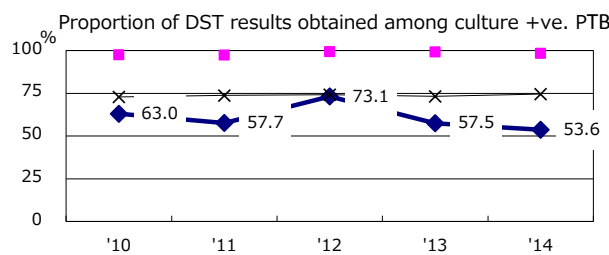
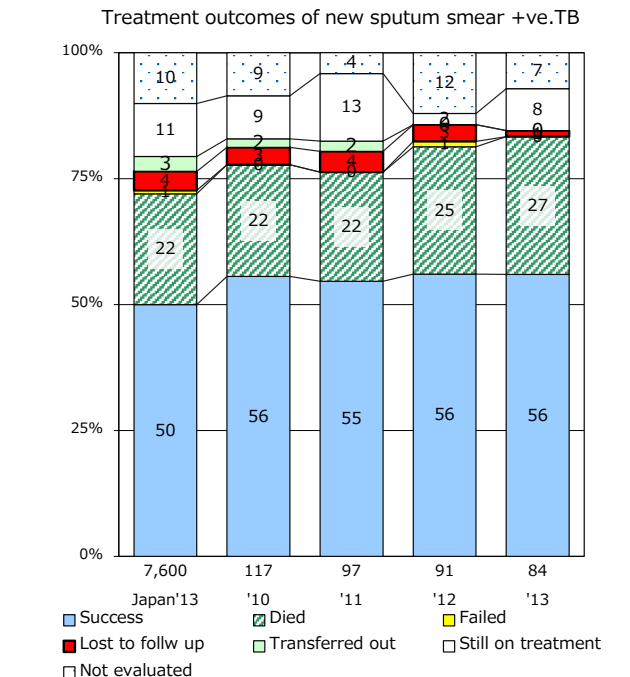
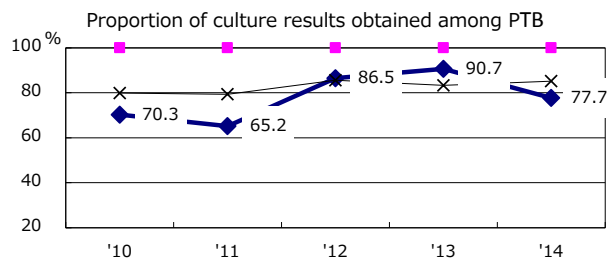
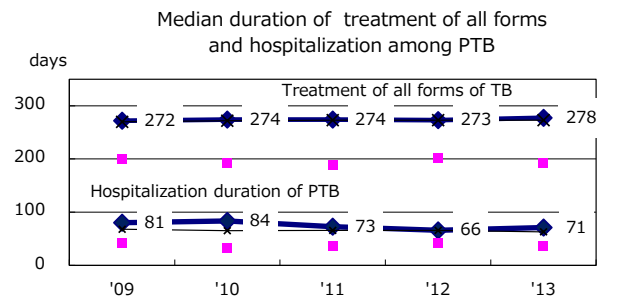
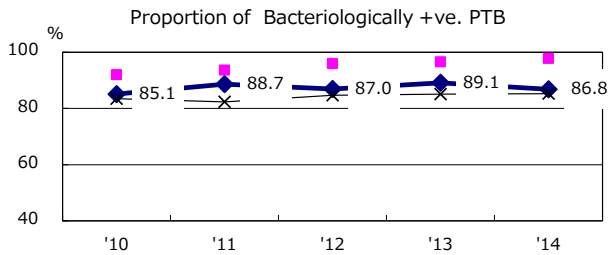
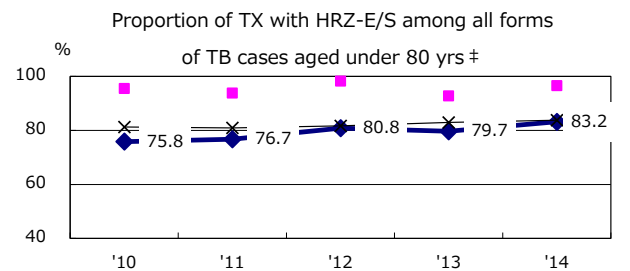
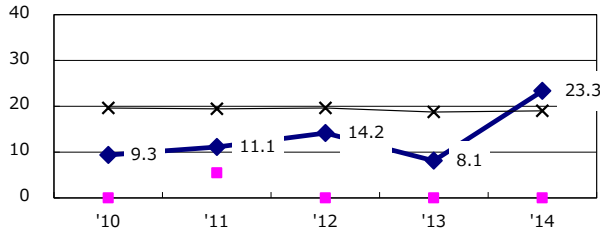


TB statistics in 2014 ( Population in Kagoshima 1,667,830 )	
Among newly registered :	(Japan)
Foreign borns	4 1.4% (5.6%)
TB cases with homeless history	0 0.0% (1.1%)
Male aged 35-59, without job and receiving public assistance	3 10.7% (8.0%)

Trends	'10	'11	'12	'13	'14
Notified cases	352	305	314	261	281
Rate per 100,000 population	20.6	18.0	18.6	15.5	16.8
Sputum smear +ve. pul.cases	133	110	93	96	117
Rate per 100,000 population	7.8	6.5	5.5	5.7	7.0
Latent Tuberculosis Infection	41	71	48	48	63
Rate per 100,000 population	2.4	4.2	2.8	2.9	3.8



Proportion of cases with total diagnosis delay(> 3 mths) among symptomatic PTB\*



PTB : pumonary TB

† Excluding unknown delay(%)	'10	'11	'12	'13	'14
	47.0	46.2	36.5	29.7	33.7

‡ Excluding unknown Tx(%)	'10	'11	'12	'13	'14
	1.4	2.6	2.7	3.9	7.4