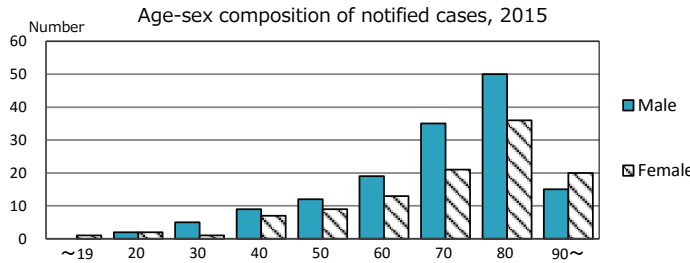
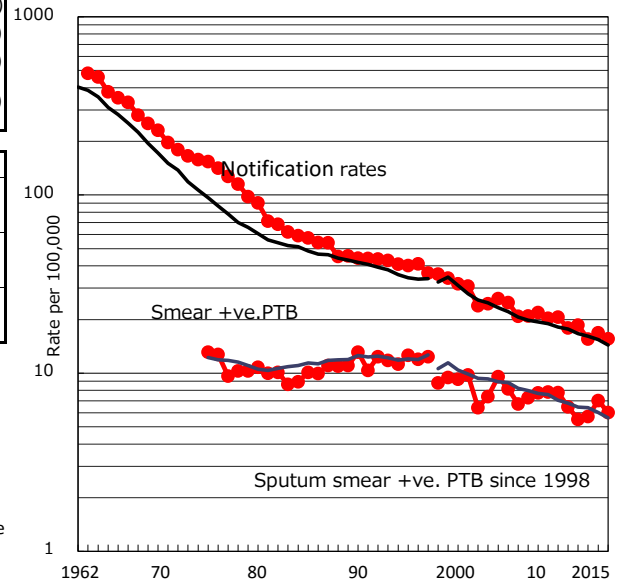


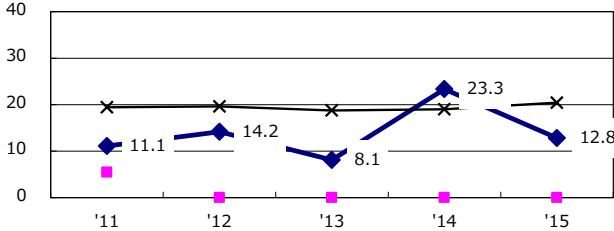
TB statistics in 2015		(Population in Kagoshima	1,648,752)
Among newly notified :		(Japan)	
Foreign borns	4	1.6%	(6.4%)
TB cases with homeless history	0	0.0%	(0.9%)
Male aged 35-59, without job and receiving public assistance	3	11.5%	(9.0%)

Trends	'11	'12	'13	'14	'15
Notified cases	305	314	261	281	257
Rate per 100,000 population	18.0	18.6	15.5	16.8	15.6
Sputum smear +ve. PTB	110	93	96	117	99
Rate per 100,000 population	6.5	5.5	5.7	7.0	6.0
Latent Tuberculosis Infection	71	48	48	63	68
Rate per 100,000 population	4.2	2.8	2.9	3.8	4.1

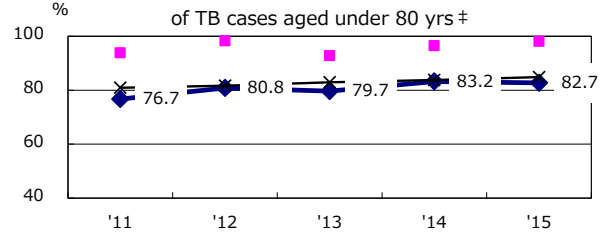
Trends of TB notification rates, all forms and smear +ve. PTB



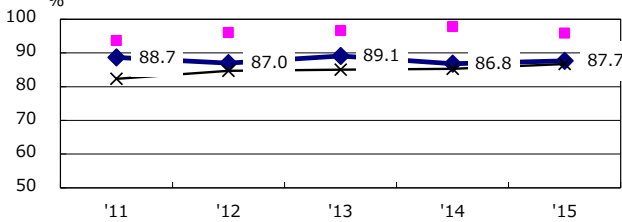
Proportion of cases with total diagnosis delay (> 3 mths) among symptomatic PTB\*



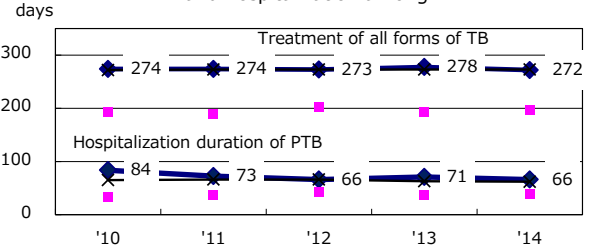
Proportion of TX with HRZ-E/S among all forms of TB cases aged under 80 yrs †



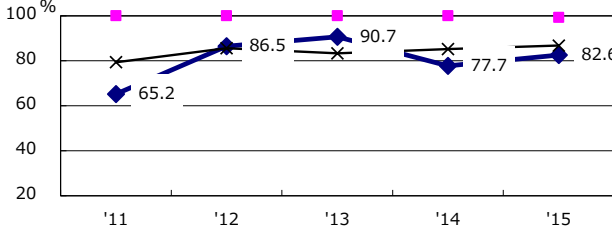
Proportion of Bacteriologically +ve. PTB



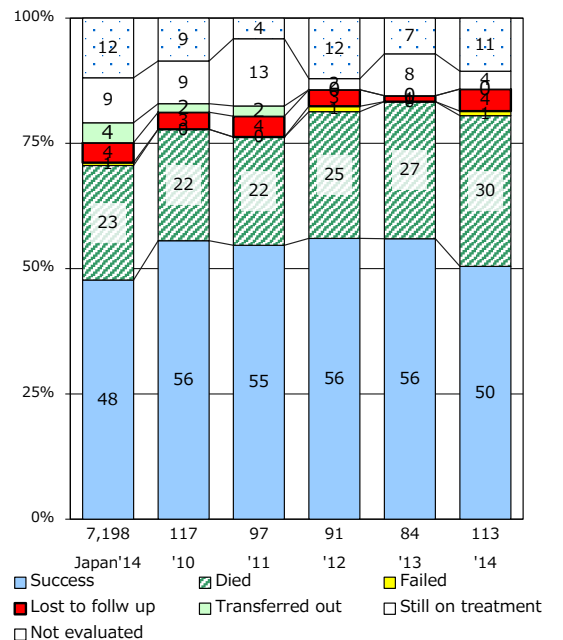
Median duration of treatment of all forms and hospitalization among PTB



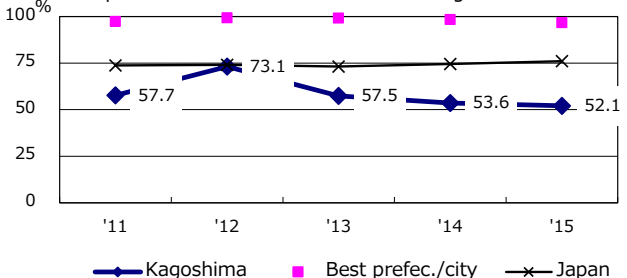
Proportion of culture results obtained among PTB



Treatment outcomes of new sputum smear +ve. TB



Proportion of DST results obtained among culture +ve. PTB



PTB : pulmonary TB

† Excluding unknown delay(%)	'11	'12	'13	'14	'15
	46.2	36.5	29.7	33.7	33.1

‡ Excluding unknown Tx(%)	'11	'12	'13	'14	'15
	2.6	2.7	3.9	7.4	2.2