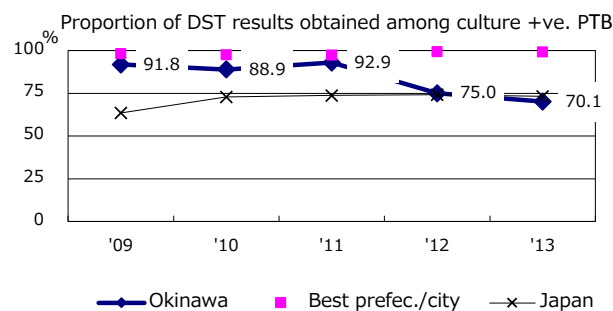
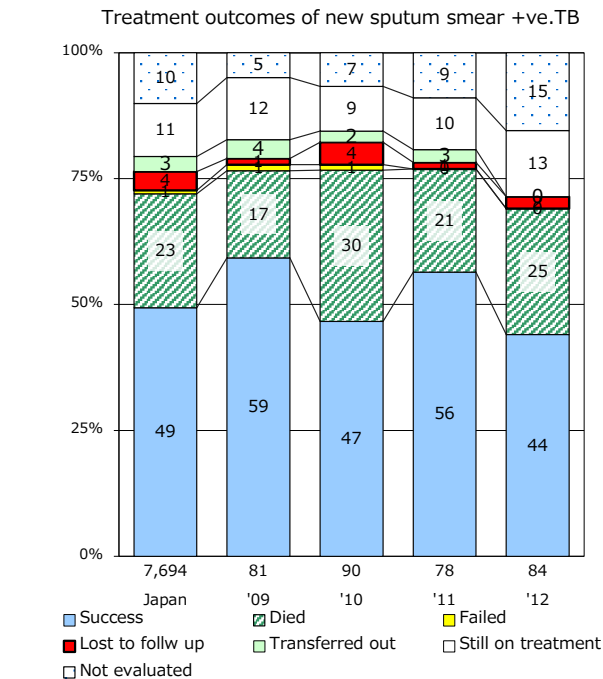
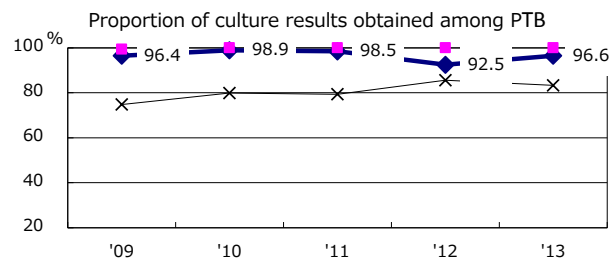
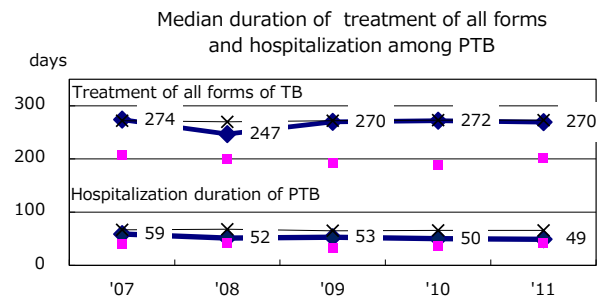
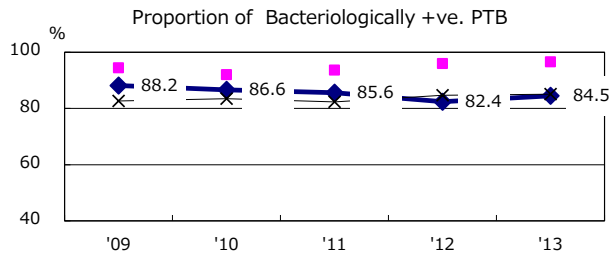
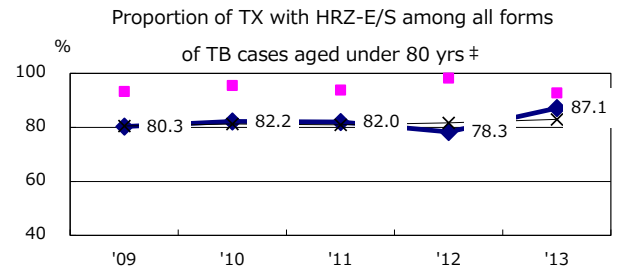
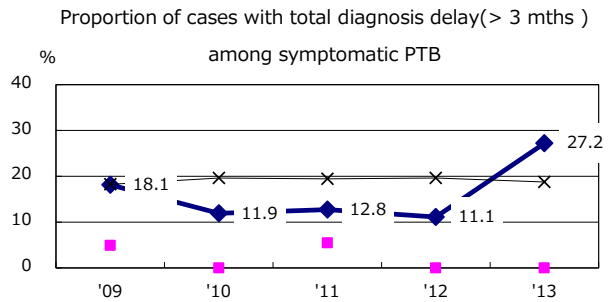
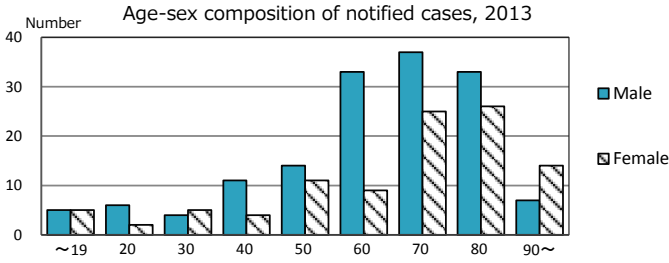
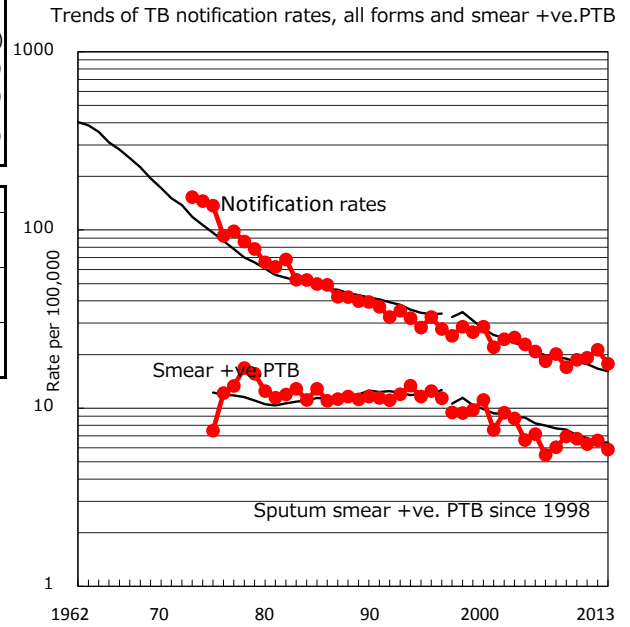


TB statistics in 2013 (Population in Okinawa 1,415,157)	
Among newly registered : (Japan)	
Foreign borns	9 3.6% (5.0%)
TB cases with homeless history	4 1.6% (1.6%)
Male aged 35-59, without job and receiving public assistance	3 10.3% (10.8%)

Trends	'09	'10	'11	'12	'13
Notified cases	235	260	269	299	251
Rate per 100,000 population	17.0	18.7	19.2	21.2	17.7
Sputum smear +ve. pul.cases	96	94	88	93	83
Rate per 100,000 population	6.9	6.8	6.3	6.6	5.9
Latent Tuberculosis Infection	40	45	94	140	210
Rate per 100,000 population	2.9	3.2	6.7	9.9	14.8



† Excluding unknown delay(%)	'09	'10	'11	'12	'13
	3.8	0.0	0.0	3.6	9.4
‡ Excluding unknown Tx(%)	'09	'10	'11	'12	'13
	0.6	1.1	1.6	1.9	0.0