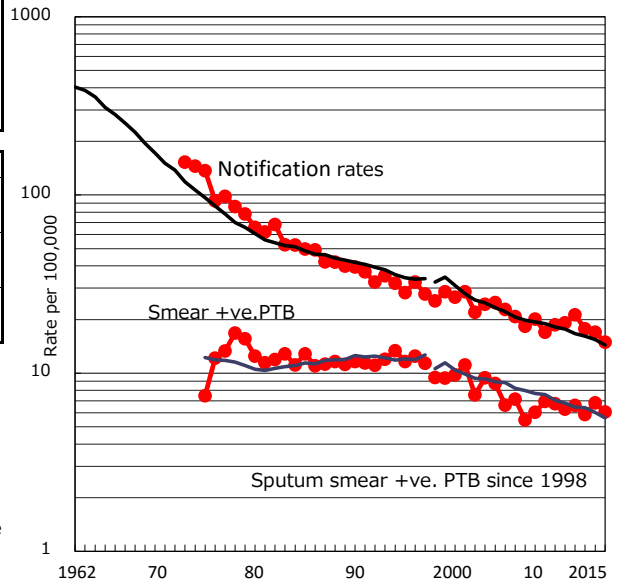


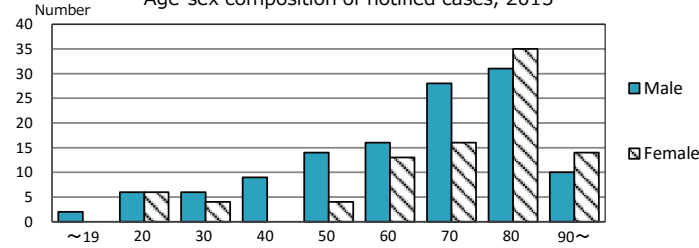
| | | |
|--|------------------------|-------------|
| TB statistics in 2015 | (Population in Okinawa | 1,434,138) |
| Among newly notified : | | (Japan) |
| Foreign borns | 7 | 3.3% (6.4%) |
| TB cases with homeless history | 3 | 1.4% (0.9%) |
| Male aged 35-59, without job and receiving public assistance | 1 | 3.4% (9.0%) |

| Trends | '11 | '12 | '13 | '14 | '15 |
|-------------------------------|------|------|------|------|------|
| Notified cases | 269 | 299 | 251 | 241 | 214 |
| Rate per 100,000 population | 19.2 | 21.2 | 17.7 | 17.0 | 14.9 |
| Sputum smear +ve. PTB | 88 | 93 | 83 | 97 | 87 |
| Rate per 100,000 population | 6.3 | 6.6 | 5.9 | 6.8 | 6.1 |
| Latent Tuberculosis Infection | 94 | 140 | 210 | 182 | 118 |
| Rate per 100,000 population | 6.7 | 9.9 | 14.8 | 12.8 | 8.2 |

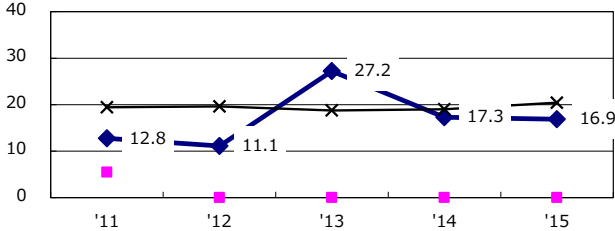
Trends of TB notification rates, all forms and smear +ve.PTB



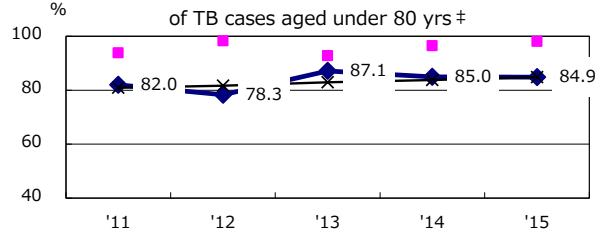
Age-sex composition of notified cases, 2015



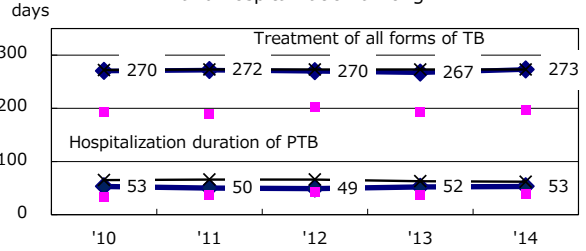
Proportion of cases with total diagnosis delay(> 3 mths) among symptomatic PTB*



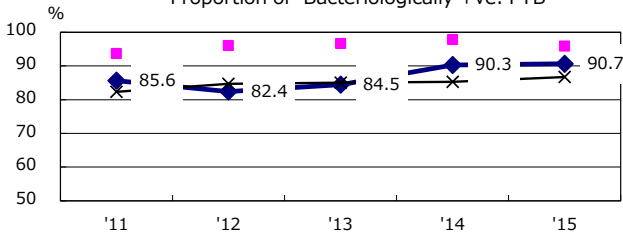
Proportion of TX with HRZ-E/S among all forms of TB cases aged under 80 yrs †



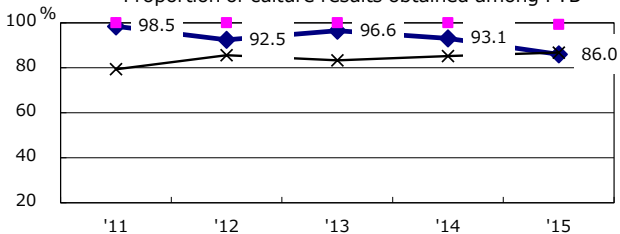
Median duration of treatment of all forms and hospitalization among PTB



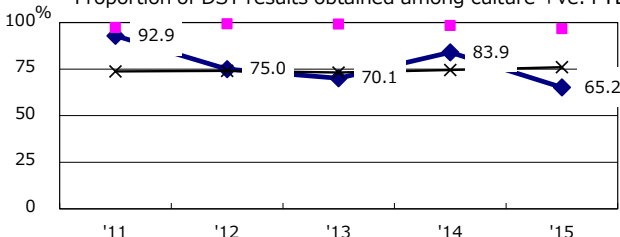
Proportion of Bacteriologically +ve. PTB



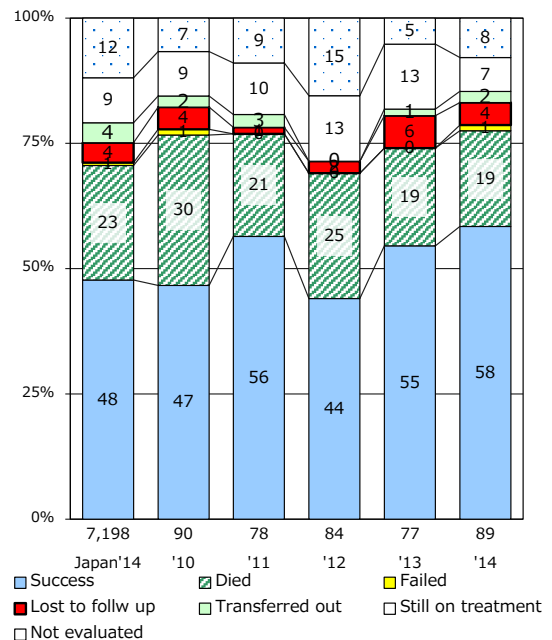
Proportion of culture results obtained among PTB



Proportion of DST results obtained among culture +ve. PTB



Treatment outcomes of new sputum smear +ve.TB



PTB : pulmonary TB

| † Excluding unknown delay(%) | '11 | '12 | '13 | '14 | '15 |
|------------------------------|-----|-----|-----|------|------|
| | 0.0 | 3.6 | 9.4 | 22.0 | 31.4 |

| ‡ Excluding unknown Tx(%) | '11 | '12 | '13 | '14 | '15 |
|---------------------------|-----|-----|-----|-----|-----|
| | 1.6 | 1.9 | 0.0 | 3.0 | 4.0 |