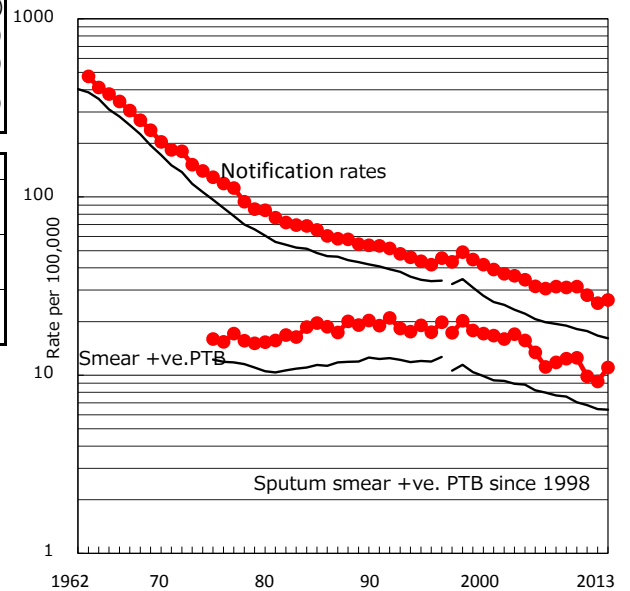


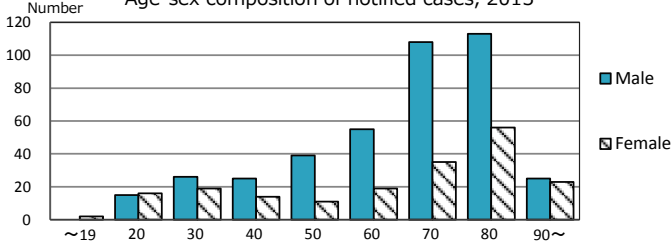
TB statistics in 2013 ( Population in Nagoya		2,271,380 )	
Among newly registered :		(Japan)	
Foreign borns	36	6.0%	(5.0%)
TB cases with homeless history	13	2.2%	(1.6%)
Male aged 35-59,without job and receiveing public assistance	17	18.9%	(10.8%)

Trends	'09	'10	'11	'12	'13
Notified cases	701	712	637	575	601
Rate per 100,000 population	31.0	31.5	28.1	25.4	26.5
Sputum smear +ve. pul.cases	279	283	223	209	251
Rate per 100,000 population	12.4	12.5	9.8	9.2	11.1
Latent Tuberculosis Infection	130	161	175	196	178
Rate per 100,000 population	5.8	7.1	7.7	8.6	7.8

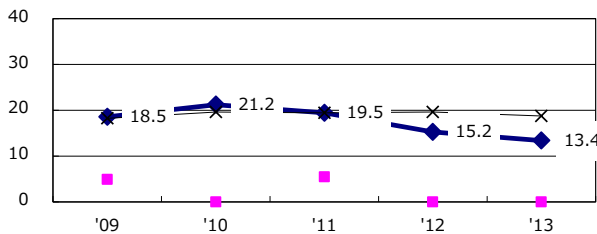
Trends of TB notification rates, all forms and smear +ve.PTB



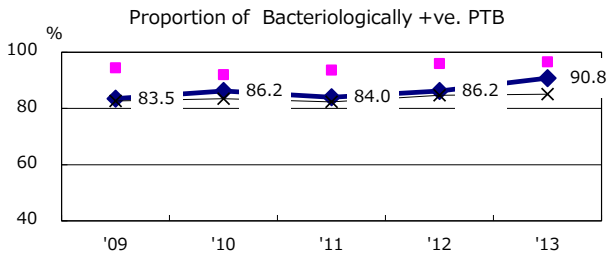
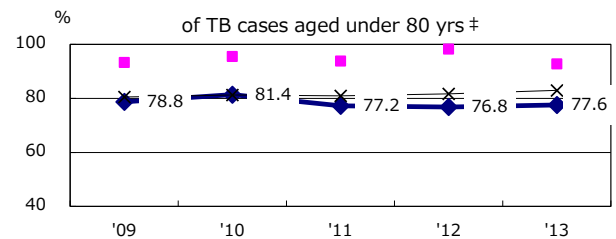
Age-sex composition of notified cases, 2013



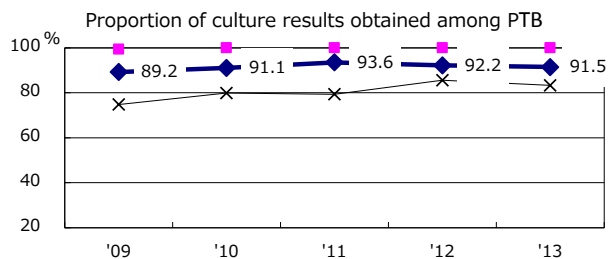
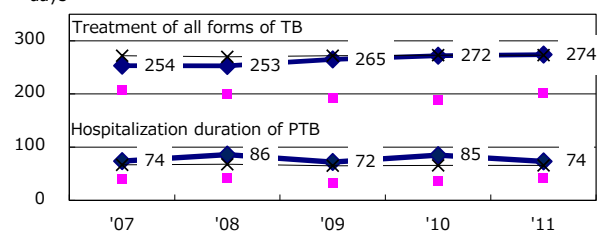
Proportion of cases with total diagnosis delay(> 3 mths) among symptomatic PTB



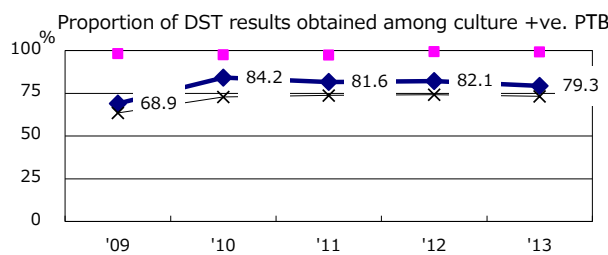
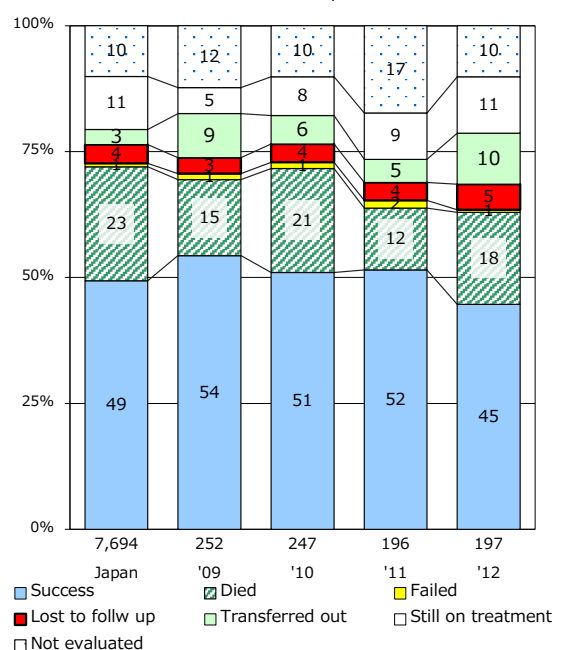
Proportion of TX with HRZ-E/S among all forms



Median duration of treatment of all forms and hospitalization among PTB



Treatment outcomes of new sputum smear +ve.TB



PTB : pumonyary TB

† Excluding unknown delay(%)	'09	'10	'11	'12	'13
	20.7	19.9	12.5	26.9	20.2

‡ Excluding unknown Tx(%)	'09	'10	'11	'12	'13
	2.0	3.5	1.7	1.5	2.3