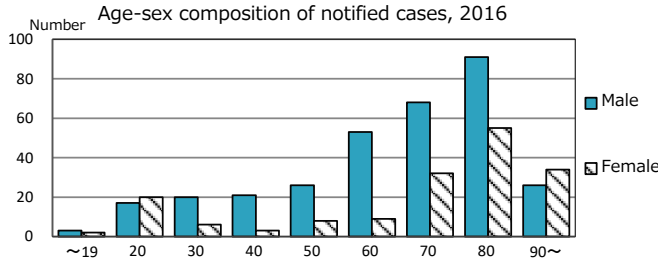
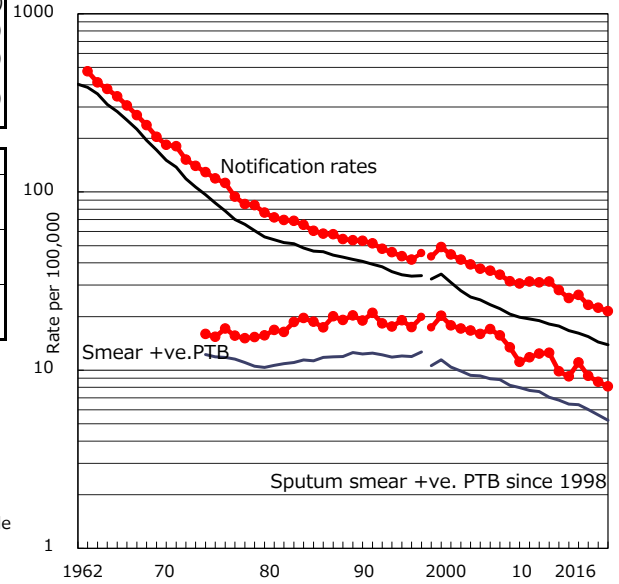


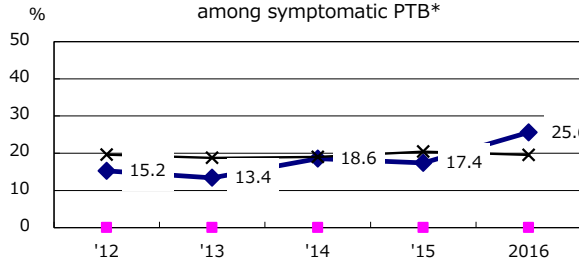
TB statistics in 2016 (Population in Nagoya C. 2,304,794)	
Among newly notified : (Japan)	
Foreign borns	36 7.3% (7.6%)
TB cases with homeless history	14 2.8% (1.0%)
Male aged 35-59, without job and receiving public assistance	9 13.4% (7.7%)

Trends	'12	'13	'14	'15	2016
Notified cases	575	601	528	514	494
Rate per 100,000 population	25.4	26.5	23.2	22.4	21.4
Sputum smear +ve. PTB	209	251	211	197	187
Rate per 100,000 population	9.2	11.1	9.3	8.6	8.1
Latent Tuberculosis Infection	196	178	206	168	147
Rate per 100,000 population	8.6	7.8	9.0	7.3	6.4

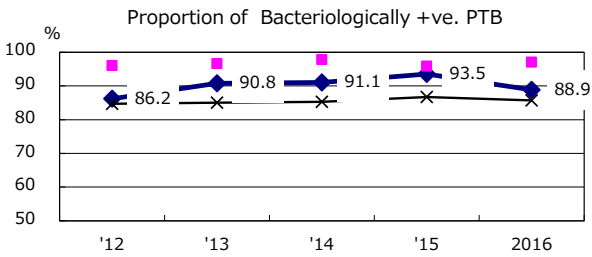
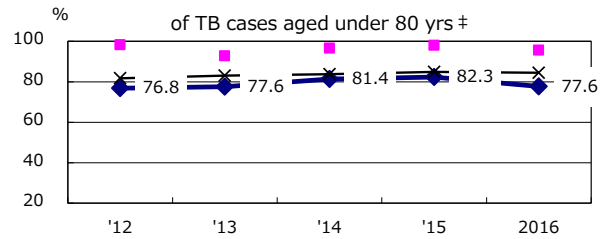
Trends of TB notification rates, all forms and smear +ve.PTB



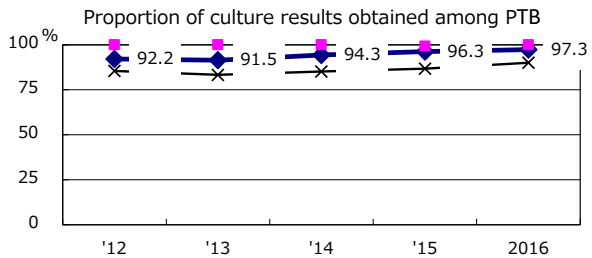
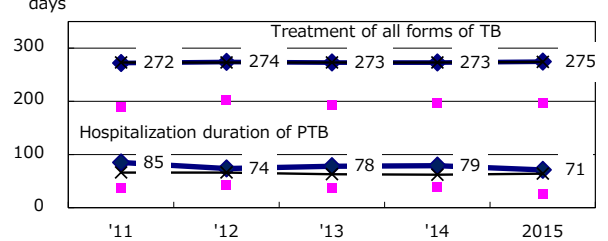
Proportion of cases with total diagnosis delay(> 3 mths) among symptomatic PTB*



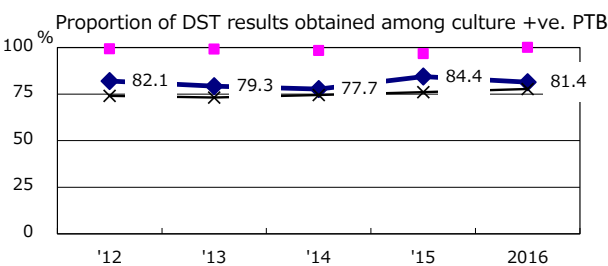
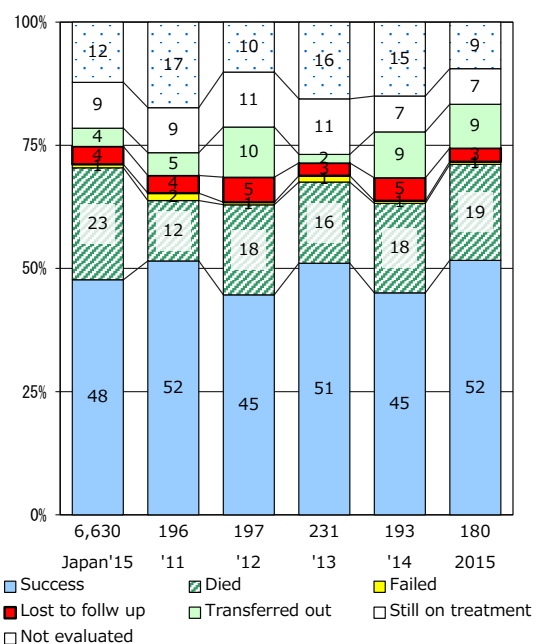
Proportion of TX with HRZ-E/S among all forms of TB cases aged under 80 yrs †



Median duration of treatment of all forms and hospitalization among PTB



Treatment outcomes of new sputum smear +ve.TB



PTB : pulmonary TB

† Excluding unknown delay(%)	'12	'13	'14	'15	2016
	26.9	20.2	25.2	19.4	18.2

‡ Excluding unknown Tx(%)	'12	'13	'14	'15	2016
	1.5	2.3	3.4	0.7	3.8