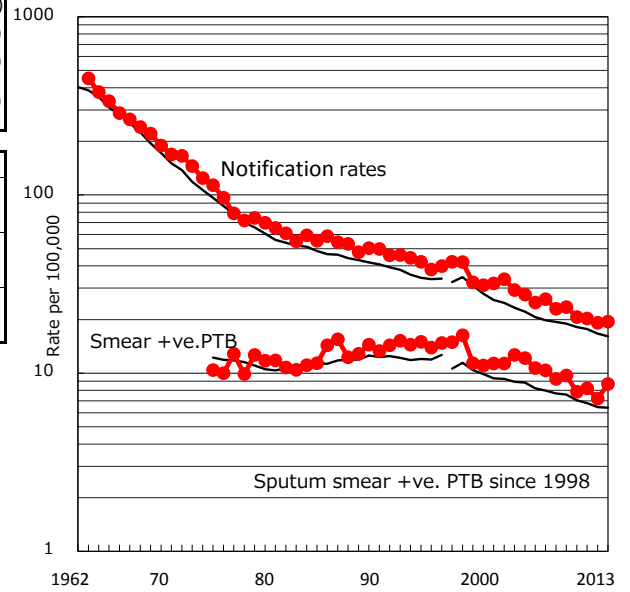


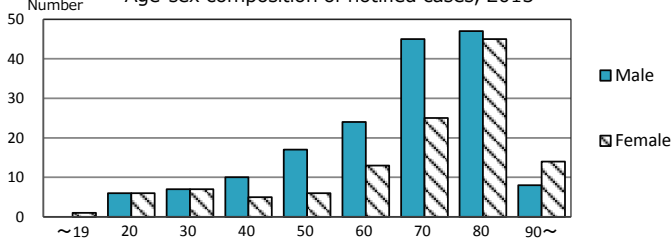
TB statistics in 2013 (Population in Kyoto 1,470,742)	
Among newly registered : (Japan)	
Foreign borns	16 5.6% (5.0%)
TB cases with homeless history	5 1.7% (1.6%)
Male aged 35-59, without job and receiving public assistance	6 17.6% (10.8%)

Trends	'09	'10	'11	'12	'13
Notified cases	344	304	299	282	286
Rate per 100,000 population	23.5	20.6	20.3	19.2	19.4
Sputum smear +ve. pul.cases	142	116	121	106	128
Rate per 100,000 population	9.7	7.9	8.2	7.2	8.7
Latent Tuberculosis Infection	47	45	152	161	87
Rate per 100,000 population	3.2	3.1	10.3	10.9	5.9

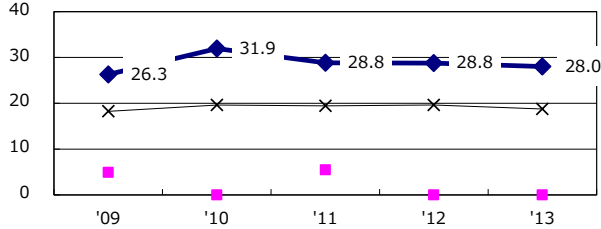
Trends of TB notification rates, all forms and smear +ve.PTB



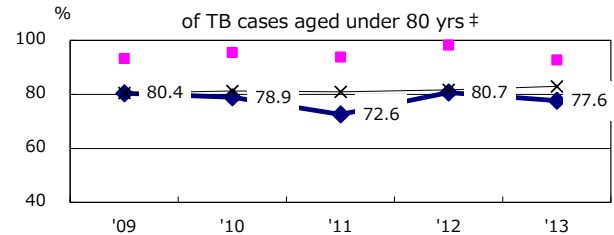
Age-sex composition of notified cases, 2013



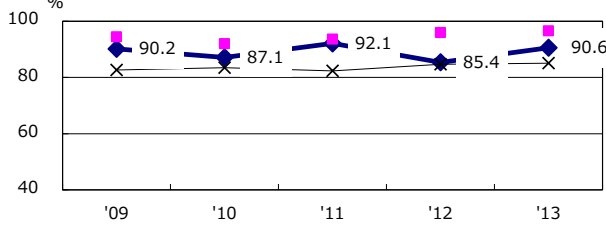
Proportion of cases with total diagnosis delay(> 3 mths) among symptomatic PTB



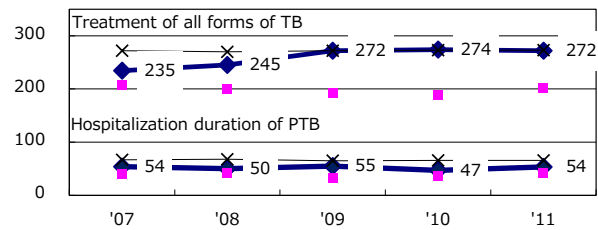
Proportion of TX with HRZ-E/S among all forms of TB cases aged under 80 yrs †



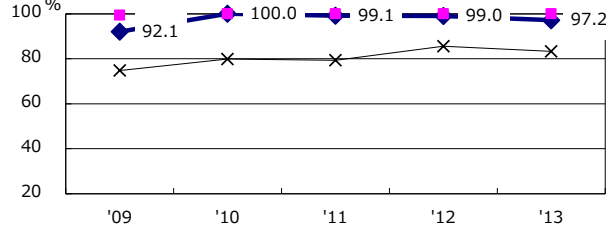
Proportion of Bacteriologically +ve. PTB



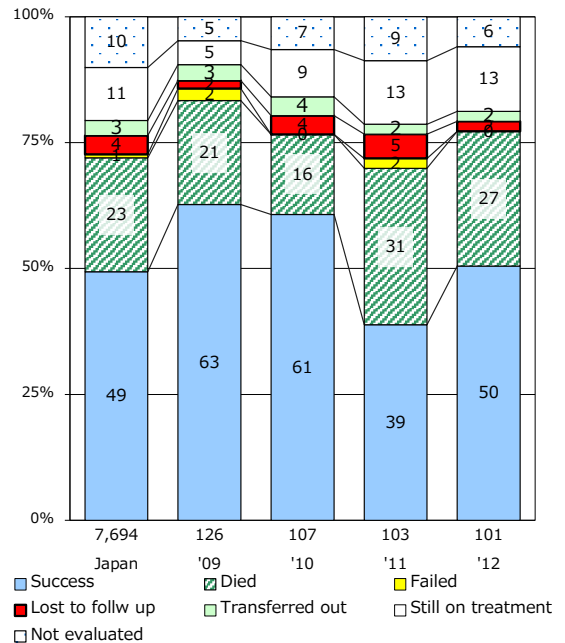
Median duration of treatment of all forms and hospitalization among PTB



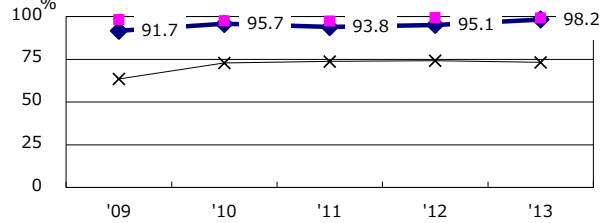
Proportion of culture results obtained among PTB



Treatment outcomes of new sputum smear +ve.TB



Proportion of DST results obtained among culture +ve. PTB



PTB : pumonyary TB

† Excluding unknown delay(%)

Year	'09	'10	'11	'12	'13
unknown delay(%)	0.0	0.0	0.0	2.4	4.1

‡ Excluding unknown Tx(%)

Year	'09	'10	'11	'12	'13
unknown Tx(%)	1.6	1.0	2.2	1.1	1.2