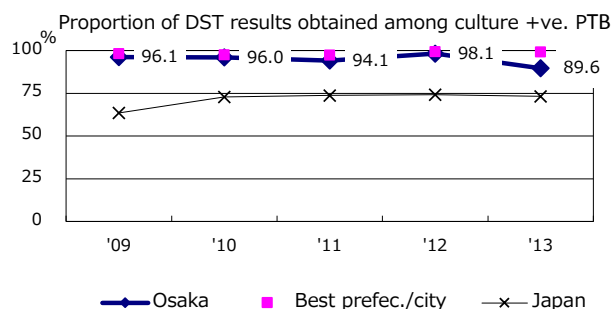
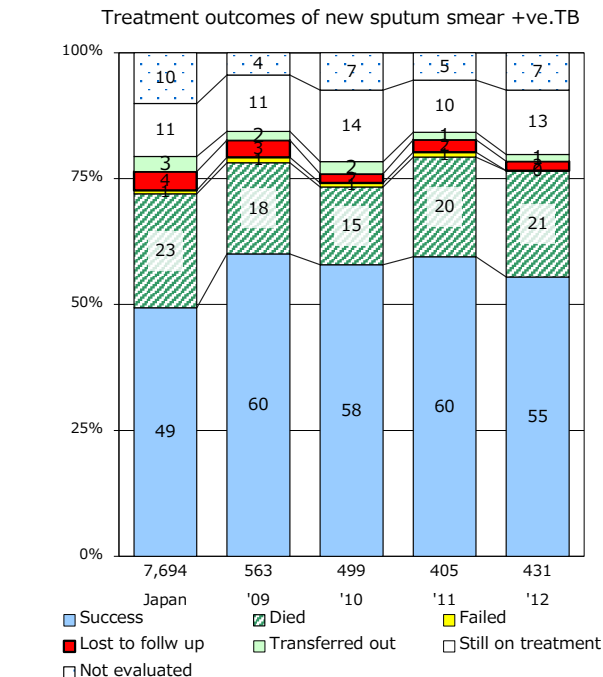
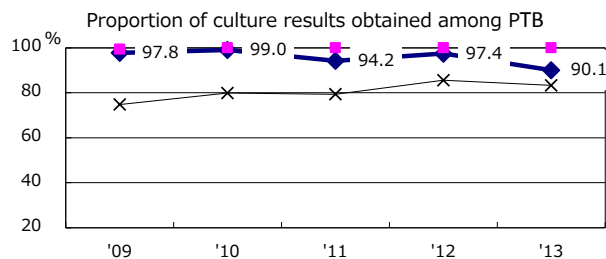
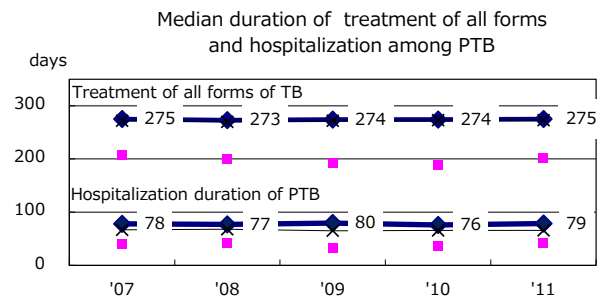
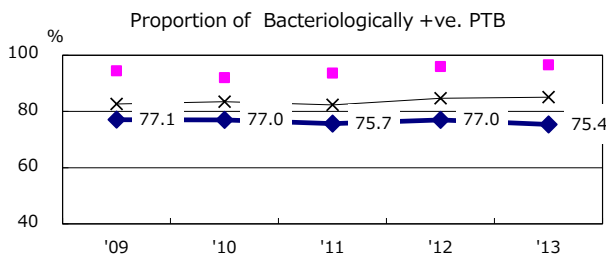
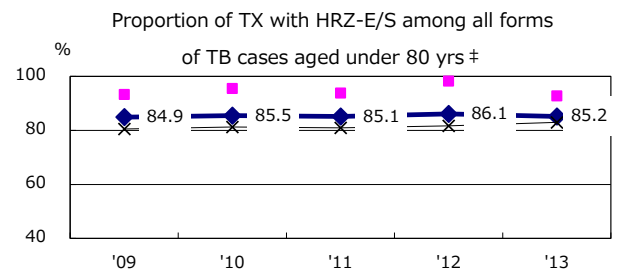
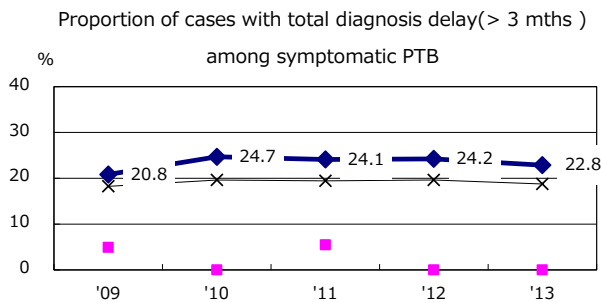
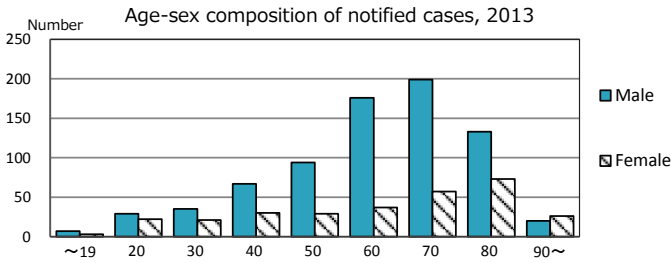
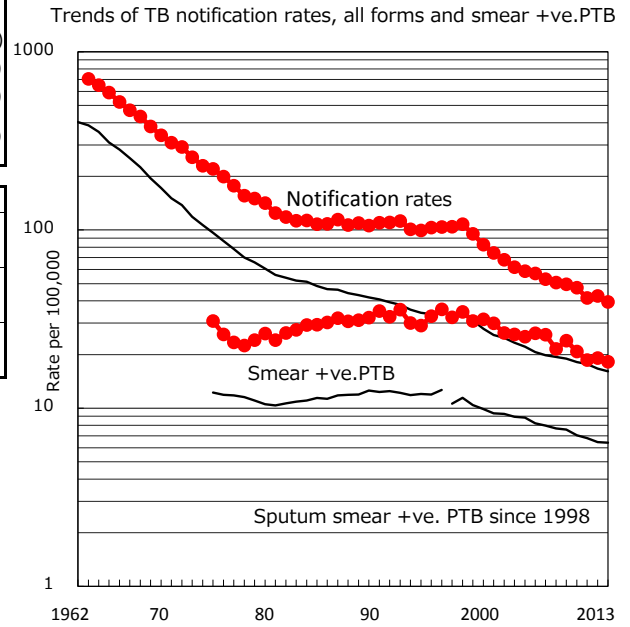


TB statistics in 2013 (Population in Osaka 2,683,487)	
Among newly registered : (Japan)	
Foreign borns	43 4.1% (5.0%)
TB cases with homeless history	54 5.1% (1.6%)
Male aged 35-59, without job and receiving public assistance	45 23.0% (10.8%)

Trends	'09	'10	'11	'12	'13
Notified cases	1,321	1,265	1,109	1,142	1,058
Rate per 100,000 population	49.6	47.4	41.5	42.7	39.4
Sputum smear +ve. pul.cases	637	555	497	512	488
Rate per 100,000 population	23.9	20.8	18.6	19.1	18.2
Latent Tuberculosis Infection	176	169	250	278	275
Rate per 100,000 population	6.6	6.3	9.4	10.4	10.2



PTB : pumonary TB

† Excluding unknown delay(%)	'09	'10	'11	'12	'13
	1.3	1.5	1.2	3.1	10.7

‡ Excluding unknown Tx(%)	'09	'10	'11	'12	'13
	2.0	1.5	1.3	2.5	3.5