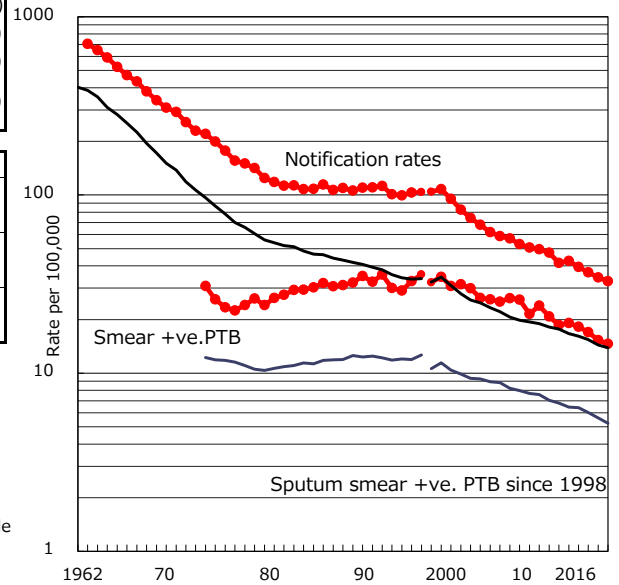


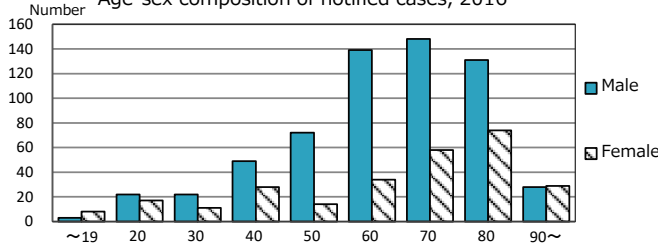
TB statistics in 2016 (Population in Osaka C. 2,702,033)	
Among newly notified : (Japan)	
Foreign borns	35 3.9% (7.6%)
TB cases with homeless history	36 4.1% (1.0%)
Male aged 35-59, without job and receiving public assistance	28 19.6% (7.7%)

Trends	'12	'13	'14	'15	2016
Notified cases	1,142	1,058	988	925	887
Rate per 100,000 population	42.7	39.4	36.8	34.4	32.8
Sputum smear +ve. PTB	512	488	456	412	394
Rate per 100,000 population	19.1	18.2	17.0	15.3	14.6
Latent Tuberculosis Infection	278	275	263	274	306
Rate per 100,000 population	10.4	10.2	9.8	10.2	11.3

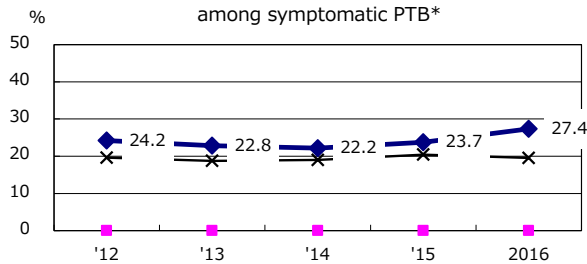
Trends of TB notification rates, all forms and smear +ve.PTB



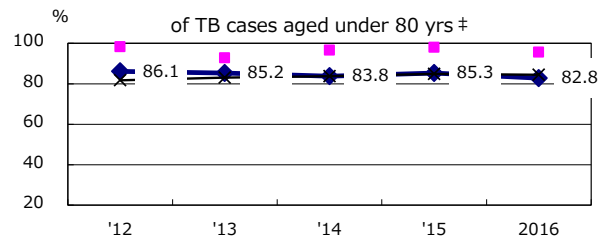
Age-sex composition of notified cases, 2016



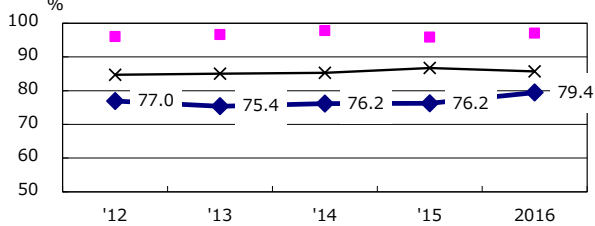
Proportion of cases with total diagnosis delay (> 3 mths) among symptomatic PTB*



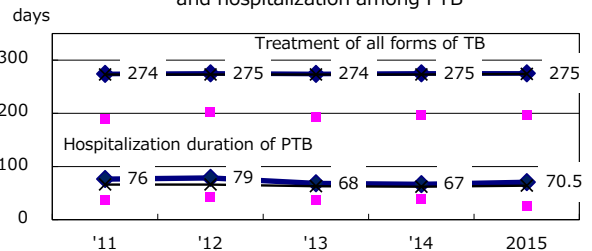
Proportion of TX with HRZ-E/S among all forms of TB cases aged under 80 yrs †



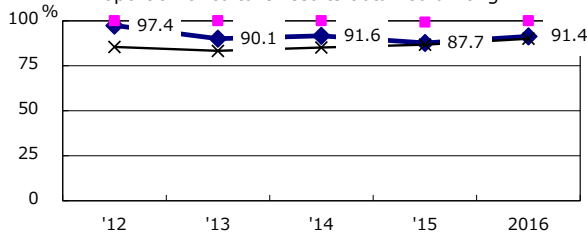
Proportion of Bacteriologically +ve. PTB



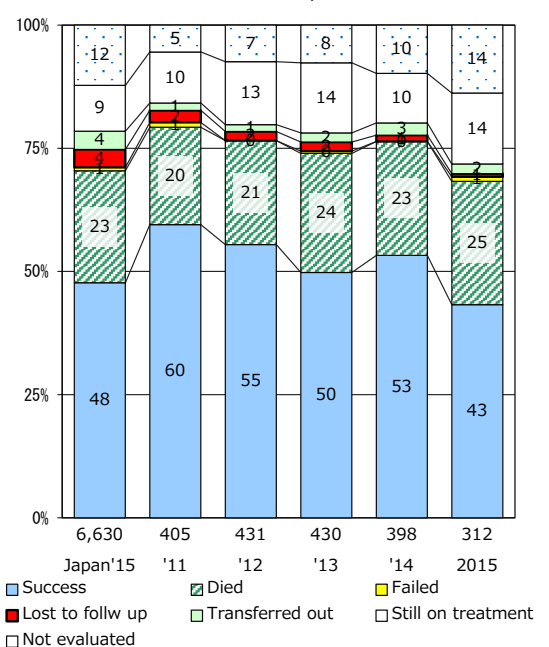
Median duration of treatment of all forms and hospitalization among PTB



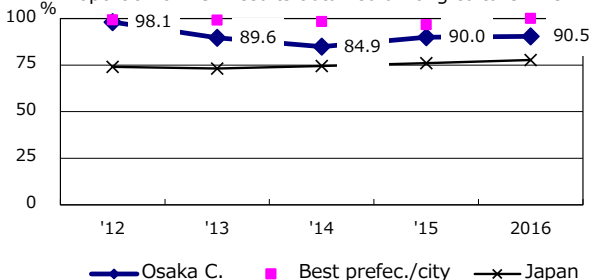
Proportion of culture results obtained among PTB



Treatment outcomes of new sputum smear +ve.TB



Proportion of DST results obtained among culture +ve. PTB



PTB : pulmonary TB

† Excluding unknown delay(%)	'12	'13	'14	'15	2016
	3.1	10.7	9.0	39.0	3.5

‡ Excluding unknown Tx(%)	'12	'13	'14	'15	2016
	2.5	3.5	2.6	3.2	2.6