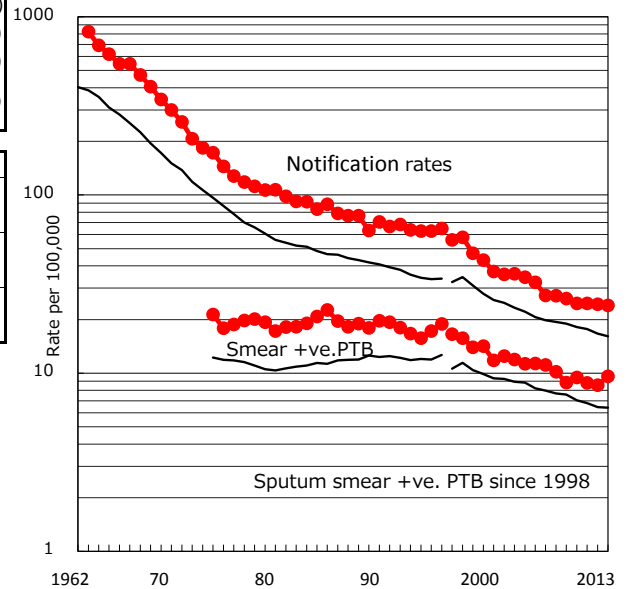


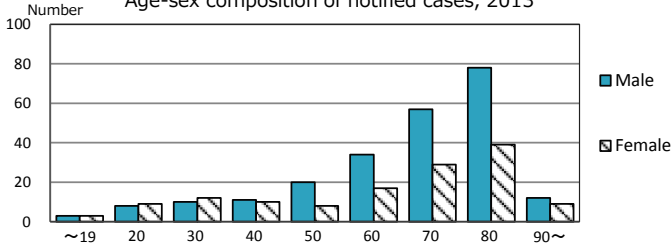
TB statistics in 2013 (Population in Kobe		1,539,751)
Among newly registered :		(Japan)
Foreign borns	25	6.8% (5.0%)
TB cases with homeless history	2	0.5% (1.6%)
Male aged 35-59,without job and receiveing public assistance	3	7.3% (10.8%)

Trends	'09	'10	'11	'12	'13
Notified cases	403	380	380	376	369
Rate per 100,000 population	26.2	24.6	24.6	24.4	24.0
Sputum smear +ve. pul.cases	136	146	136	132	148
Rate per 100,000 population	8.9	9.5	8.8	8.6	9.6
Latent Tuberculosis Infection	46	56	79	89	104
Rate per 100,000 population	3.0	3.6	5.1	5.8	6.8

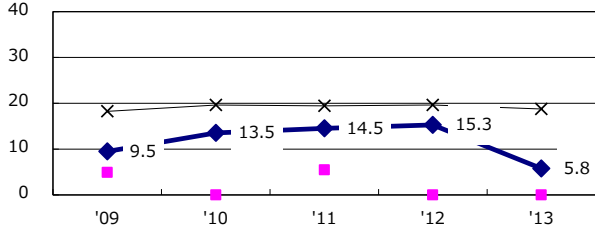
Trends of TB notification rates, all forms and smear +ve.PTB



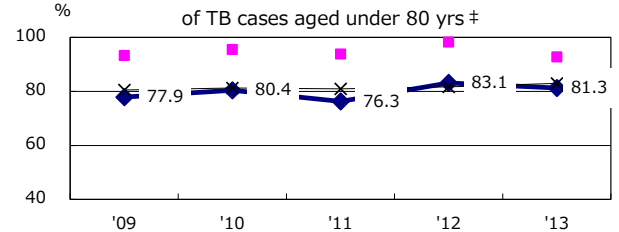
Age-sex composition of notified cases, 2013



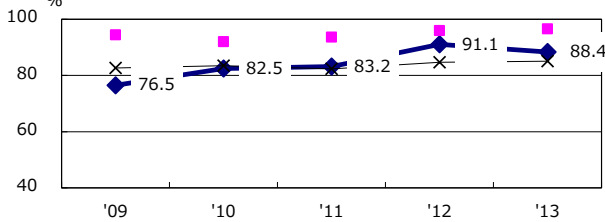
Proportion of cases with total diagnosis delay(> 3 mths) among symptomatic PTB



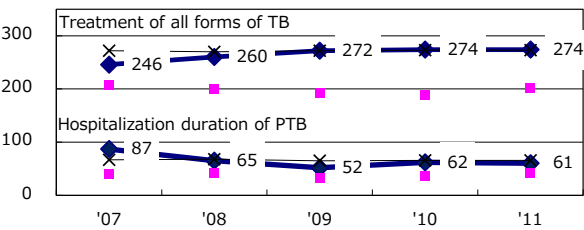
Proportion of TX with HRZ-E/S among all forms of TB cases aged under 80 yrs †



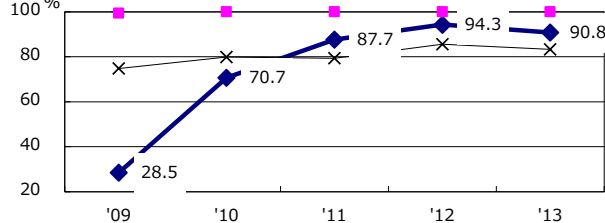
Proportion of Bacteriologically +ve. PTB



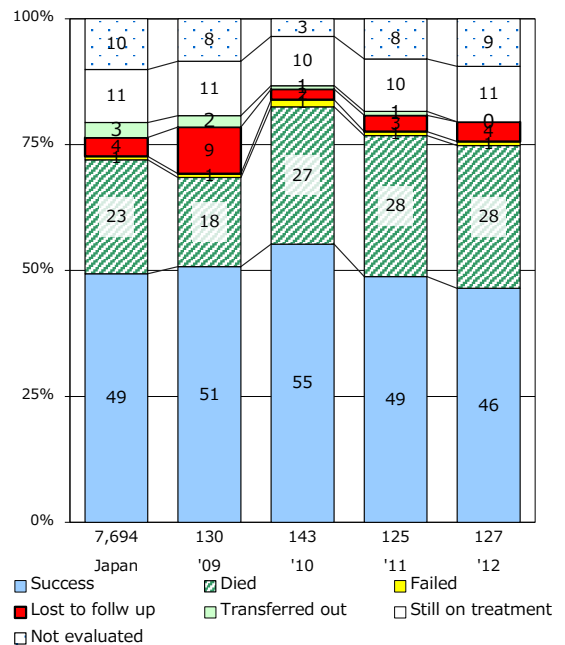
Median duration of treatment of all forms and hospitalization among PTB



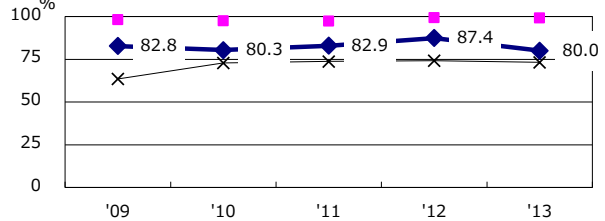
Proportion of culture results obtained among PTB



Treatment outcomes of new sputum smear +ve.TB



Proportion of DST results obtained among culture +ve. PTB



PTB : pumonyary TB

† Excluding unknown delay(%)	'09	'10	'11	'12	'13
	45.3	69.2	38.5	65.0	77.6

‡ Excluding unknown Tx(%)	'09	'10	'11	'12	'13
	0.0	0.0	0.4	0.8	0.4