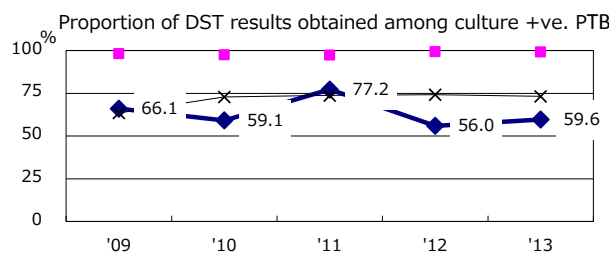
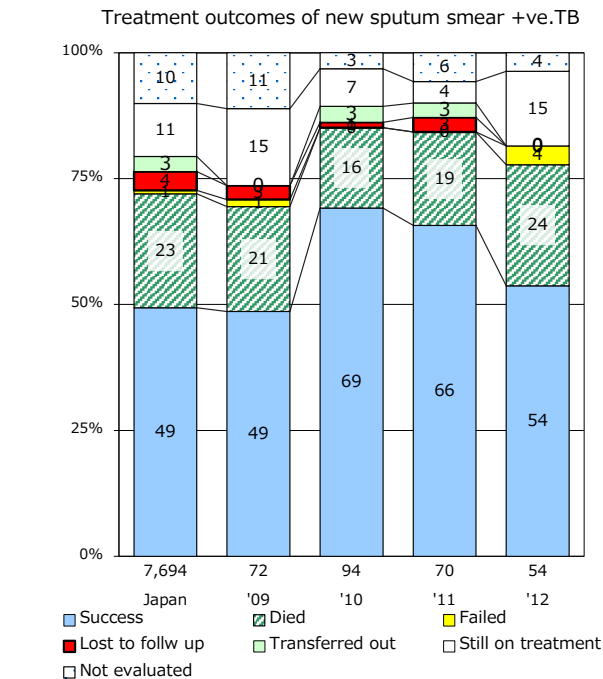
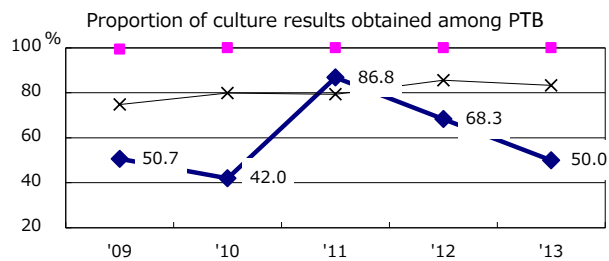
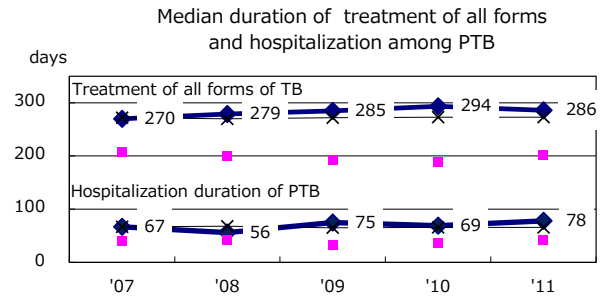
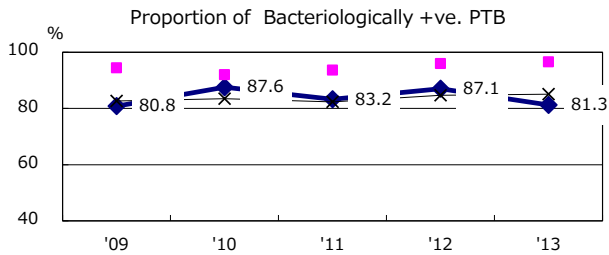
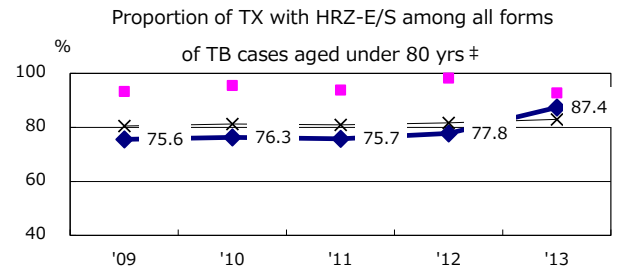
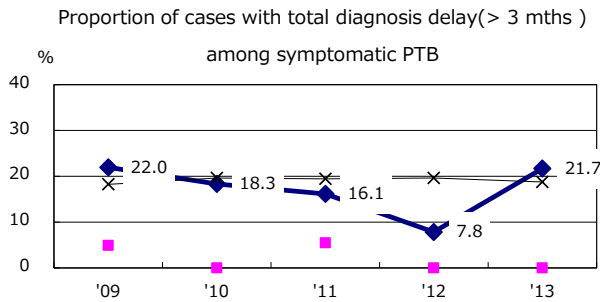
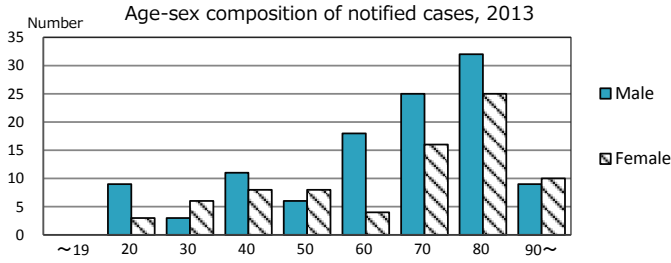
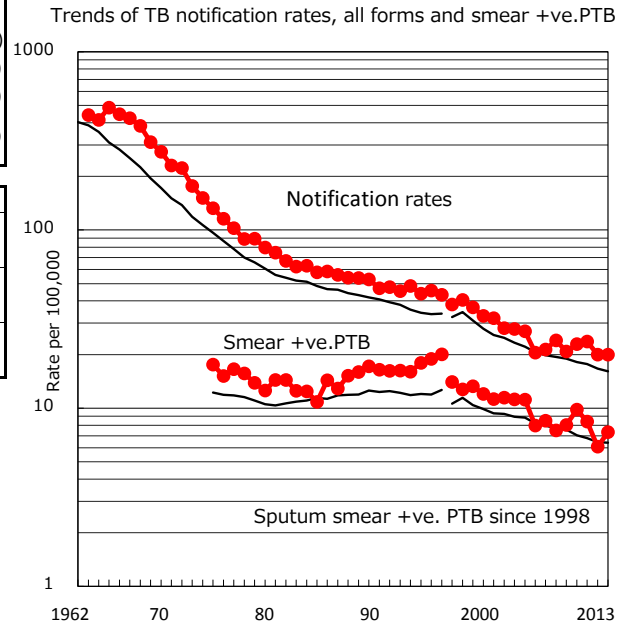


TB statistics in 2013 (Population in Kitakyushu 968,122)	
Among newly registered : (Japan)	
Foreign borns	6 3.1% (5.0%)
TB cases with homeless history	2 1.0% (1.6%)
Male aged 35-59, without job and receiving public assistance	1 5.0% (10.8%)

Trends	'09	'10	'11	'12	'13
Notified cases	204	224	230	194	193
Rate per 100,000 population	20.8	22.9	23.6	20.0	19.9
Sputum smear +ve. pul.cases	79	96	82	59	71
Rate per 100,000 population	8.0	9.8	8.4	6.1	7.3
Latent Tuberculosis Infection	11	10	40	71	70
Rate per 100,000 population	1.1	1.0	4.1	7.3	7.2



PTB : pumonary TB

† Excluding unknown delay(%)	'09	'10	'11	'12	'13
	66.9	45.0	4.6	53.2	45.0

‡ Excluding unknown Tx(%)	'09	'10	'11	'12	'13
	0.0	0.0	1.4	1.8	5.1