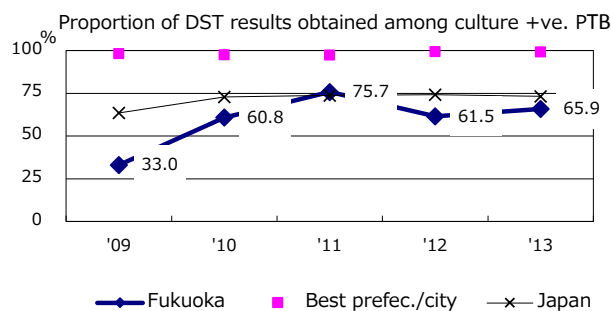
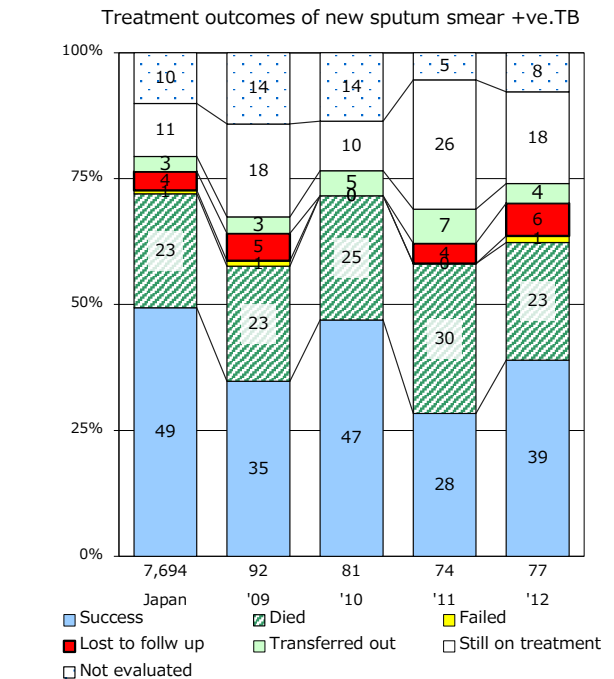
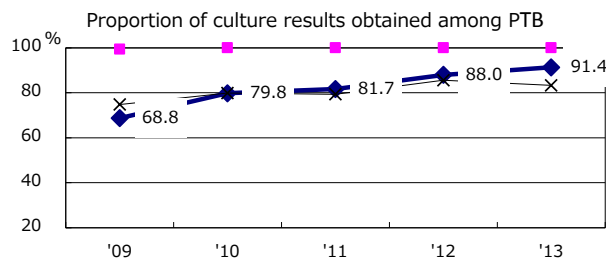
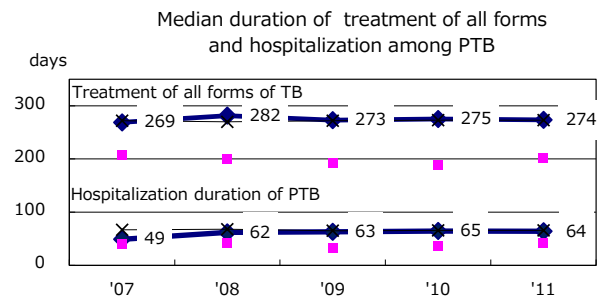
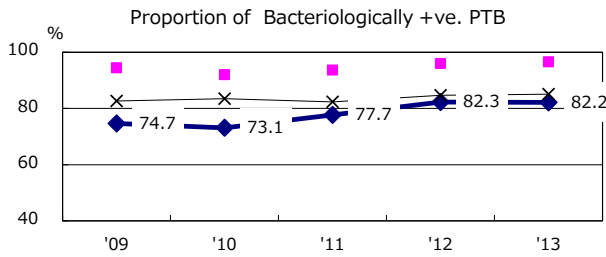
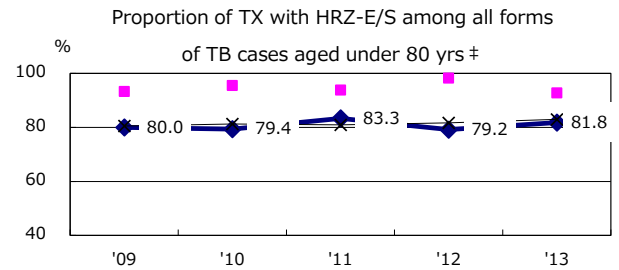
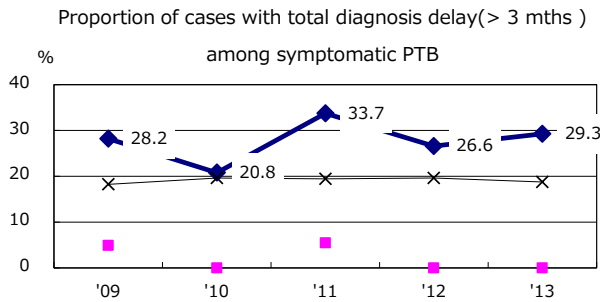
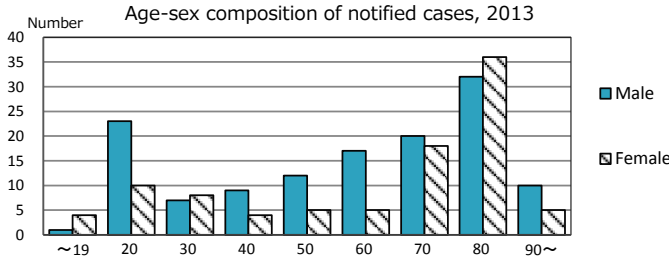
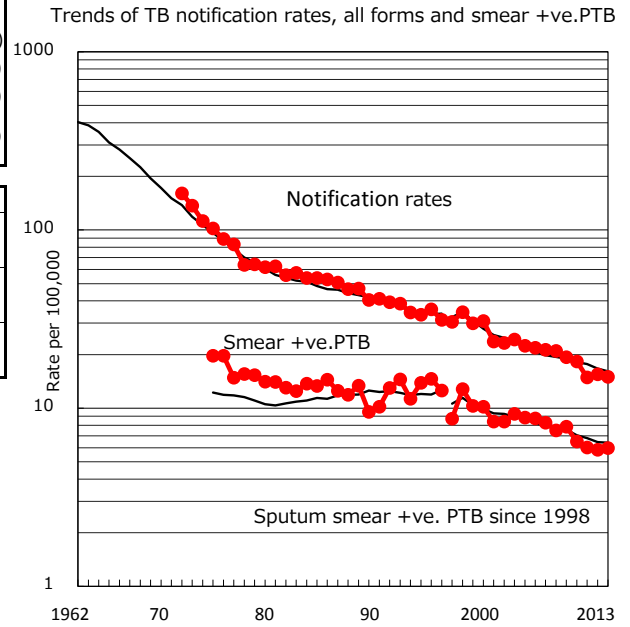


TB statistics in 2013 (Population in Fukuoka 1,506,313)	
Among newly registered :	(Japan)
Foreign borns	32 14.2% (5.0%)
TB cases with homeless history	4 1.8% (1.6%)
Male aged 35-59,without job and receiveing public assistance	3 10.7% (10.8%)

Trends	'09	'10	'11	'12	'13
Notified cases	280	268	220	231	226
Rate per 100,000 population	19.3	18.3	14.9	15.5	15.0
Sputum smear +ve. pul.cases	114	95	89	87	90
Rate per 100,000 population	7.9	6.5	6.0	5.8	6.0
Latent Tuberculosis Infection	39	41	123	100	95
Rate per 100,000 population	2.7	2.8	8.3	6.7	6.3



PTB : pumonyary TB

† Excluding unknown delay(%)	'09	'10	'11	'12	'13
	54.4	51.0	39.9	44.8	35.9

‡ Excluding unknown Tx(%)	'09	'10	'11	'12	'13
	0.5	1.0	1.3	1.3	0.0