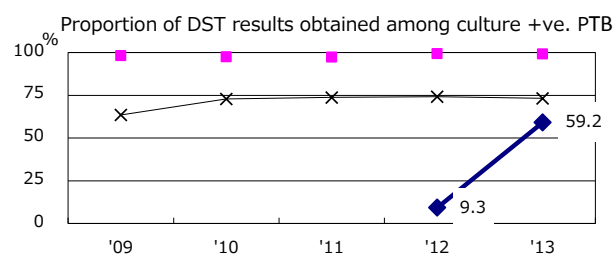
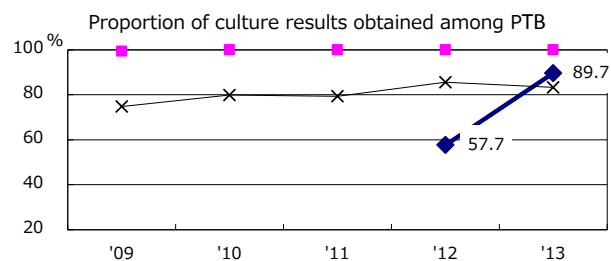
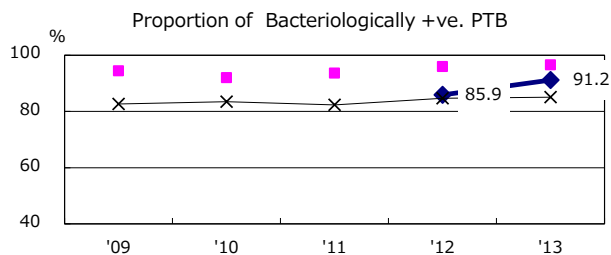
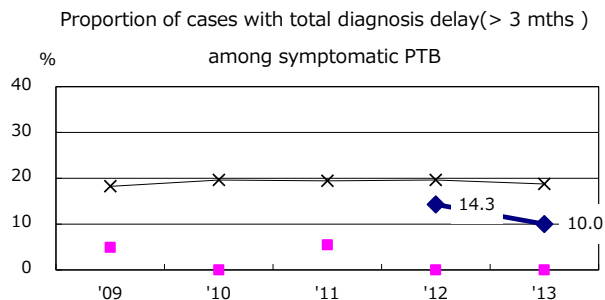
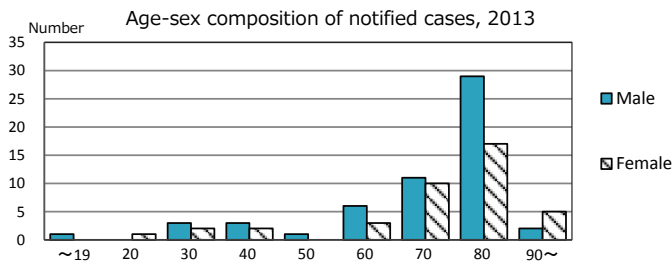


TB statistics in 2013 (Population in Kumamoto 739,541)		
Among newly registered : (Japan)		
Foreign borns	1	1.0% (5.0%)
TB cases with homeless history	1	1.0% (1.6%)
Male aged 35-59, without job and receiving public assistance	0	0.0% (10.8%)

Trends	'09	'10	'11	'12	'13
Notified cases	-	-	-	115	96
Rate per 100,000 population	-	-	-	15.6	13.0
Sputum smear +ve. pul.cases	-	-	-	39	40
Rate per 100,000 population	-	-	-	5.3	5.4
Latent Tuberculosis Infection	-	-	-	55	35
Rate per 100,000 population	-	-	-	7.5	4.7

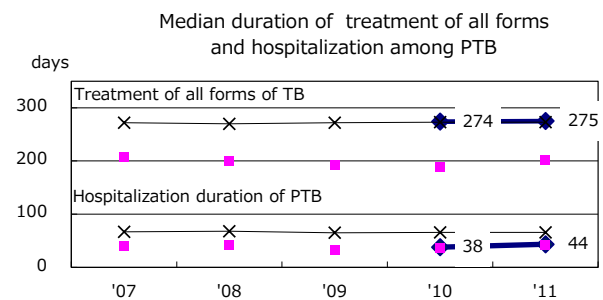
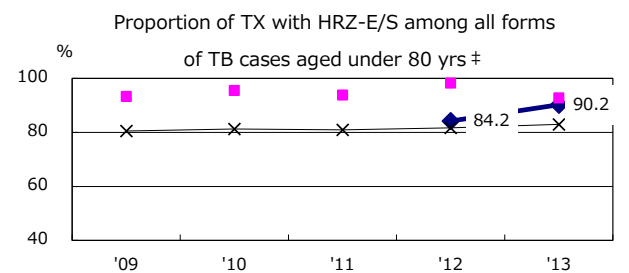
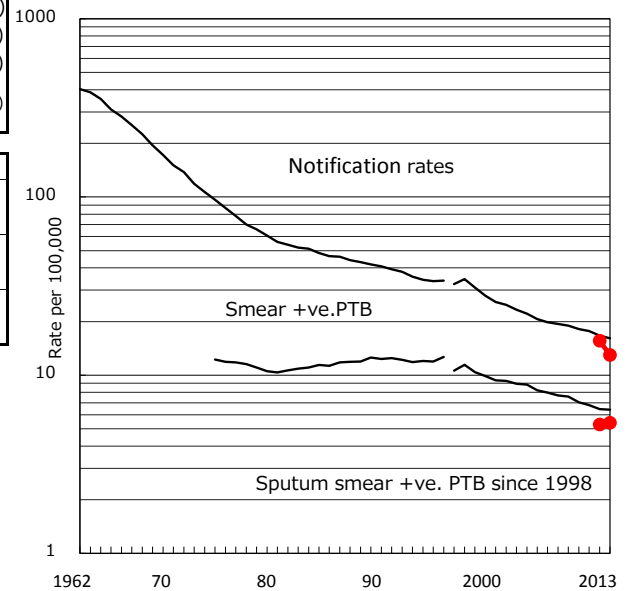


◆ Kumamoto ■ Best prefec./city × Japan

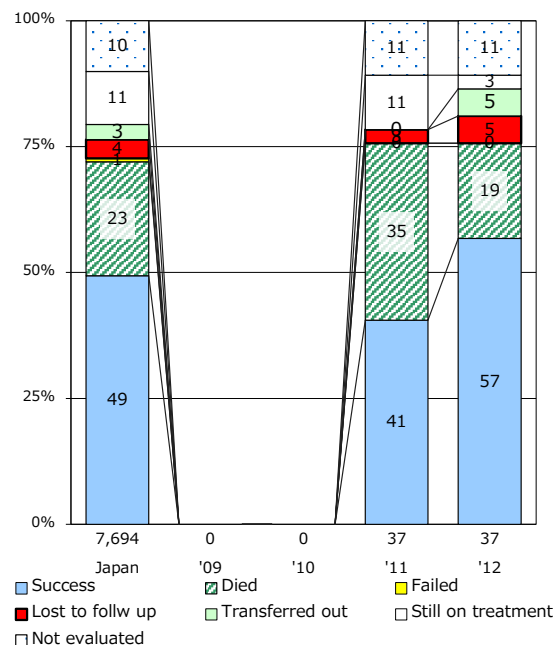
PTB : pulmonary TB

† Excluding unknown delay(%)	'09	'10	'11	'12	'13
	-	-	-	79.1	83.1

Trends of TB notification rates, all forms and smear +ve.PTB



Treatment outcomes of new sputum smear +ve.TB



‡ Excluding unknown Tx(%)	'09	'10	'11	'12	'13
	-	-	-	8.1	4.7