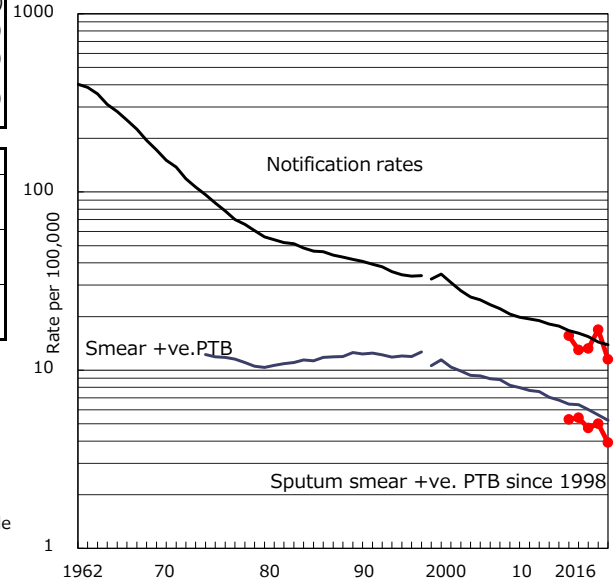


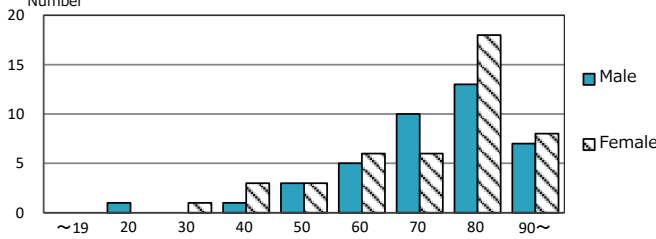
TB statistics in 2016 (Population in Kumamoto C. 739,606)	
Among newly notified : (Japan)	
Foreign borns	1 1.2% (7.6%)
TB cases with homeless history	0 0.0% (1.0%)
Male aged 35-59, without job and receiving public assistance	0 0.0% (7.7%)

Trends	'12	'13	'14	'15	2016
Notified cases	115	96	98	125	85
Rate per 100,000 population	15.6	13.0	13.2	16.9	11.5
Sputum smear +ve. PTB	39	40	35	37	29
Rate per 100,000 population	5.3	5.4	4.7	5.0	3.9
Latent Tuberculosis Infection	55	35	37	40	29
Rate per 100,000 population	7.5	4.7	5.0	5.4	3.9

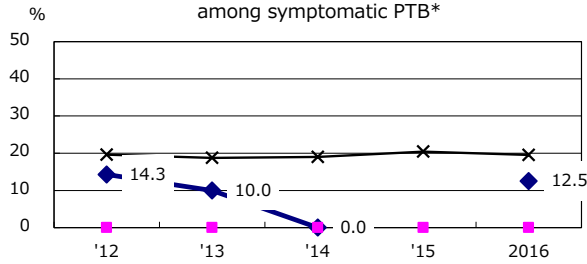
Trends of TB notification rates, all forms and smear +ve.PTB



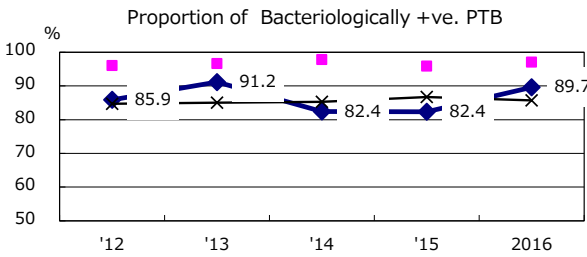
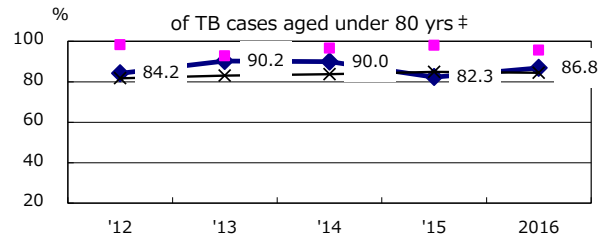
Age-sex composition of notified cases, 2016



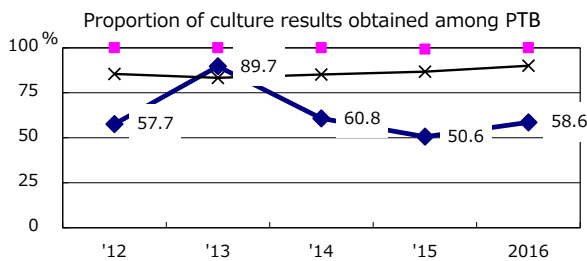
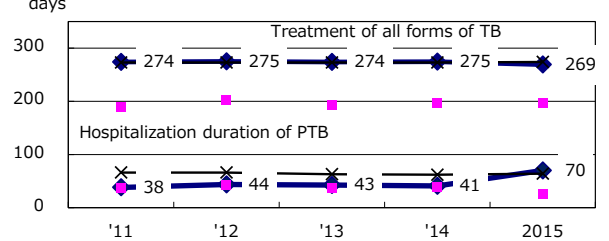
Proportion of cases with total diagnosis delay(> 3 mths) among symptomatic PTB*



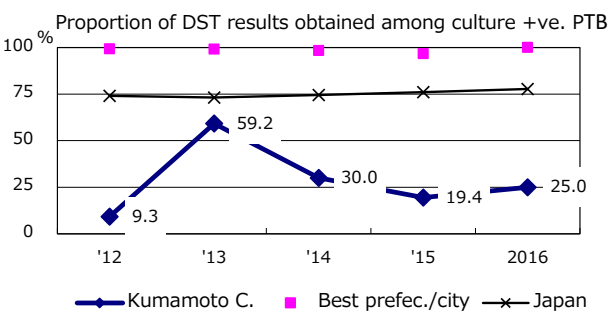
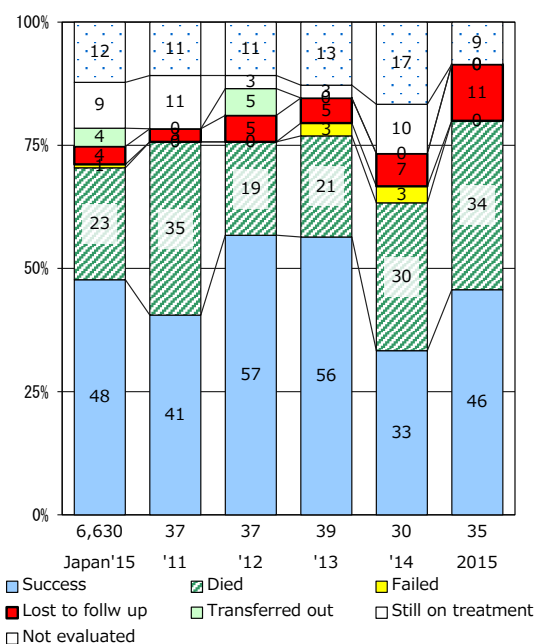
Proportion of TX with HRZ-E/S among all forms of TB cases aged under 80 yrs †



Median duration of treatment of all forms and hospitalization among PTB



Treatment outcomes of new sputum smear +ve.TB



PTB : pulmonary TB

† Excluding unknown delay(%)	'12	'13	'14	'15	2016
	79.1	83.1	92.3	100.0	33.3

‡ Excluding unknown Tx(%)	'12	'13	'14	'15	2016
	8.1	4.7	5.7	4.6	2.6