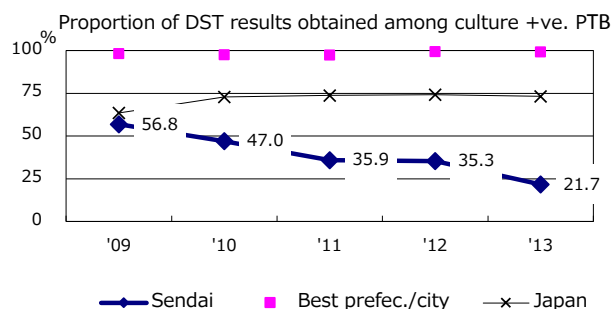
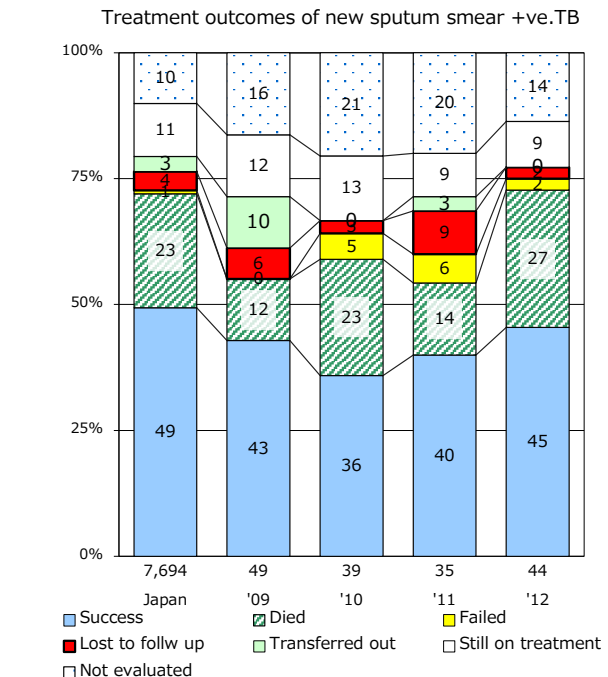
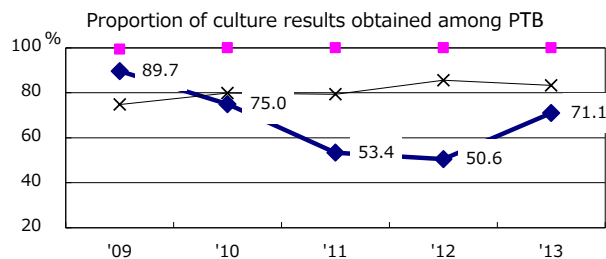
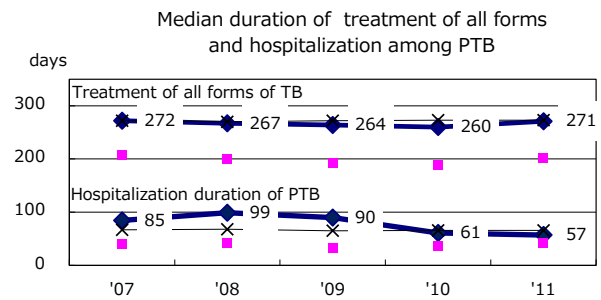
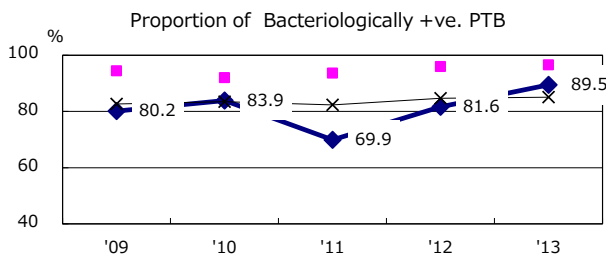
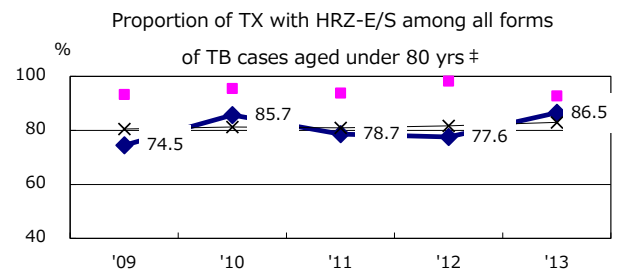
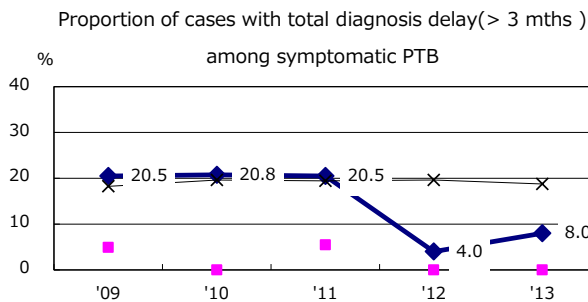
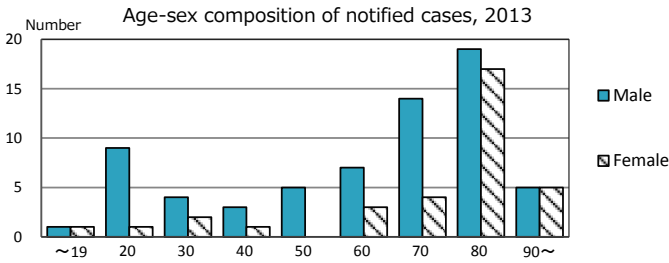
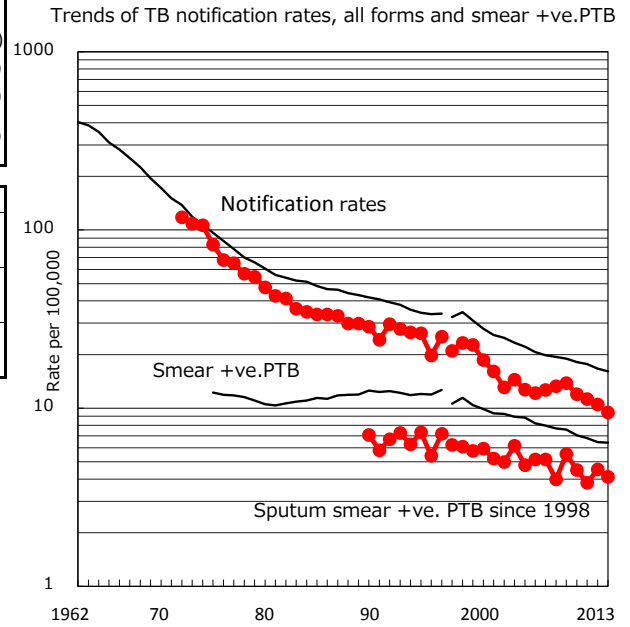


TB statistics in 2013 (Population in Sendai 1,068,511)	
Among newly registered : (Japan)	
Foreign borns	10 9.9% (5.0%)
TB cases with homeless history	1 1.0% (1.6%)
Male aged 35-59,without job and receiveing public assistance	0 0.0% (10.8%)

Trends	'09	'10	'11	'12	'13
Notified cases	143	125	118	111	101
Rate per 100,000 population	13.8	12.0	11.2	10.5	9.5
Sputum smear +ve. pul.cases	57	47	40	48	44
Rate per 100,000 population	5.5	4.5	3.8	4.5	4.1
Latent Tuberculosis Infection	22	41	62	59	46
Rate per 100,000 population	2.1	3.9	5.9	5.6	4.3



PTB : pumonary TB

† Excluding unknown delay(%)	'09	'10	'11	'12	'13
	59.8	31.2	44.3	61.5	53.7

‡ Excluding unknown Tx(%)	'09	'10	'11	'12	'13
	2.0	0.0	3.8	4.3	5.5