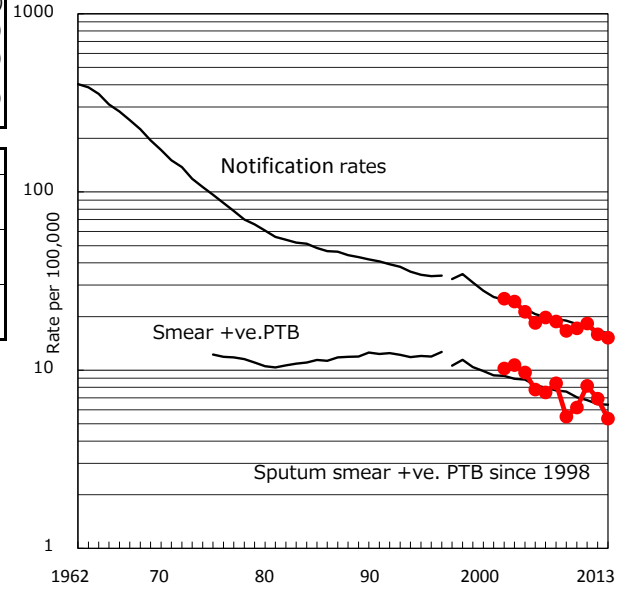


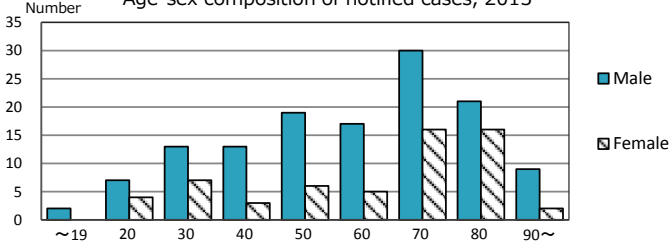
TB statistics in 2013 (Population in Saitama 1,251,799)	
Among newly registered : (Japan)	
Foreign borns	8 4.2% (5.0%)
TB cases with homeless history	7 3.7% (1.6%)
Male aged 35-59, without job and receiving public assistance	10 22.2% (10.8%)

Trends	'09	'10	'11	'12	'13
Notified cases	203	211	226	198	190
Rate per 100,000 population	16.6	17.1	18.3	15.9	15.2
Sputum smear +ve. pul.cases	67	76	101	86	67
Rate per 100,000 population	5.5	6.2	8.2	6.9	5.4
Latent Tuberculosis Infection	23	56	92	60	45
Rate per 100,000 population	1.9	4.5	7.4	4.8	3.6

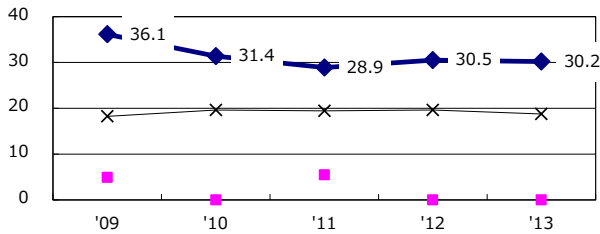
Trends of TB notification rates, all forms and smear +ve.PTB



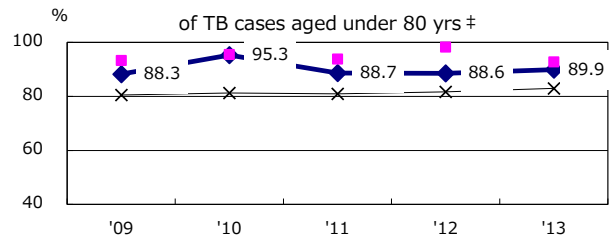
Age-sex composition of notified cases, 2013



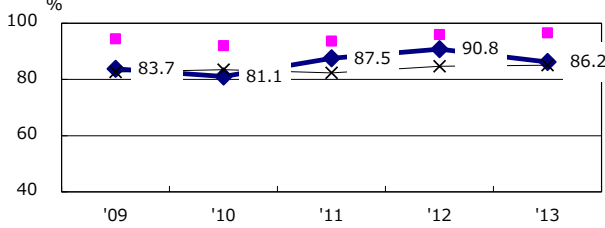
Proportion of cases with total diagnosis delay (> 3 mths) among symptomatic PTB



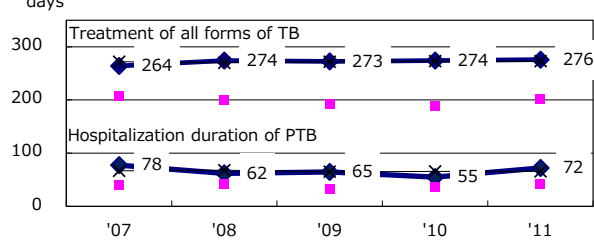
Proportion of TX with HRZ-E/S among all forms of TB cases aged under 80 yrs †



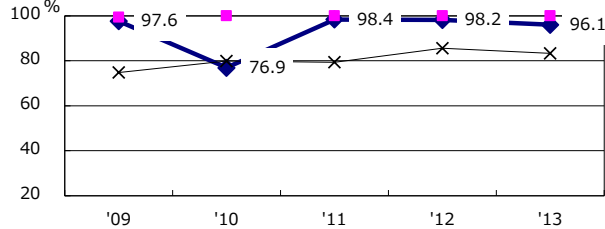
Proportion of Bacteriologically +ve. PTB



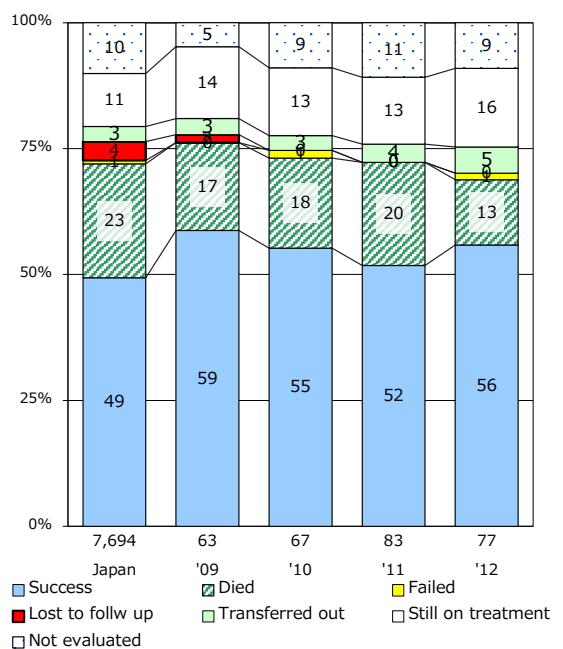
Median duration of treatment of all forms and hospitalization among PTB



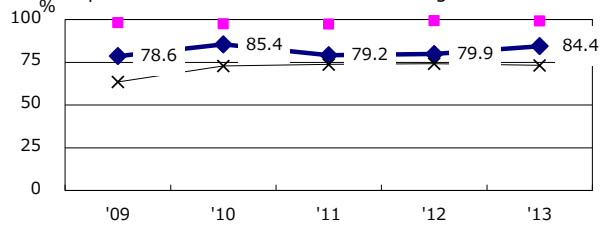
Proportion of culture results obtained among PTB



Treatment outcomes of new sputum smear +ve.TB



Proportion of DST results obtained among culture +ve. PTB



PTB : pumonary TB

† Excluding unknown delay(%)	'09	'10	'11	'12	'13
	1.7	6.4	7.5	14.6	10.3

‡ Excluding unknown Tx(%)	'09	'10	'11	'12	'13
	0.6	2.3	3.0	0.7	2.1