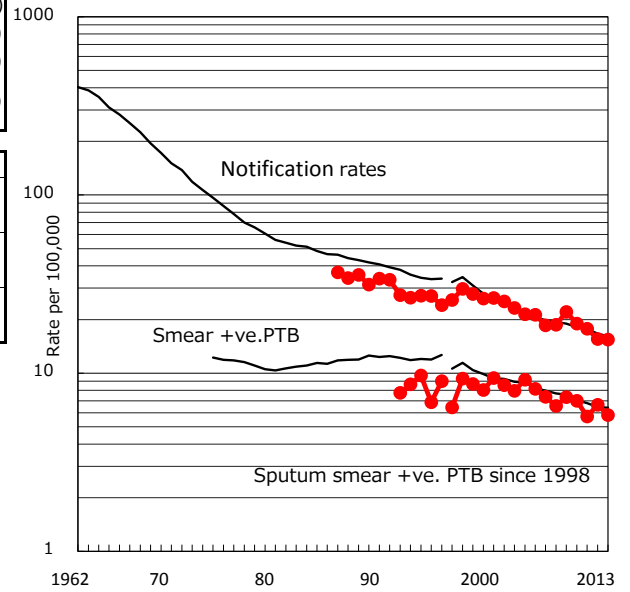


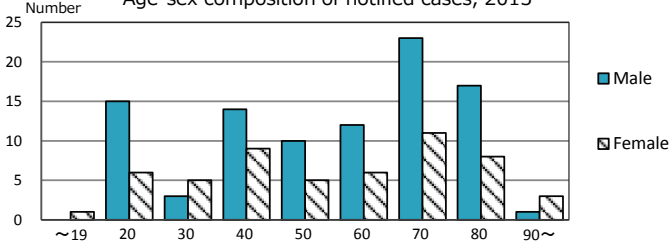
TB statistics in 2013 (Population in Chiba		964,055)
Among newly registered : (Japan)		
Foreign borns	8	5.4% (5.0%)
TB cases with homeless history	1	0.7% (1.6%)
Male aged 35-59, without job and receiving public assistance	2	7.4% (10.8%)

Trends	'09	'10	'11	'12	'13
Notified cases	211	182	171	150	149
Rate per 100,000 population	22.1	19.0	17.8	15.6	15.5
Sputum smear +ve. pul.cases	70	67	55	64	56
Rate per 100,000 population	7.3	7.0	5.7	6.6	5.8
Latent Tuberculosis Infection	35	46	93	85	77
Rate per 100,000 population	3.7	4.8	9.7	8.8	8.0

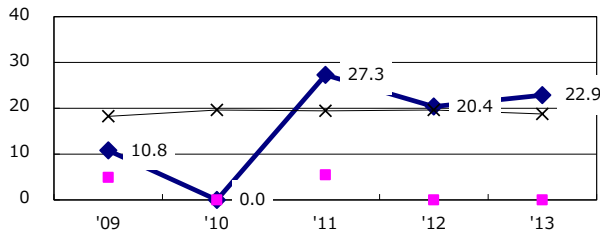
Trends of TB notification rates, all forms and smear +ve.PTB



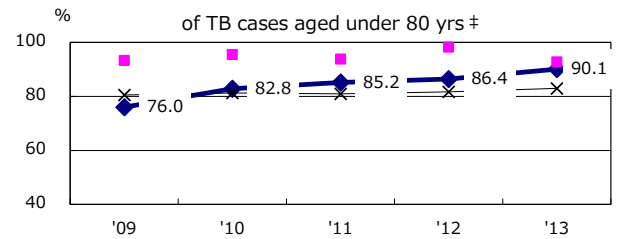
Age-sex composition of notified cases, 2013



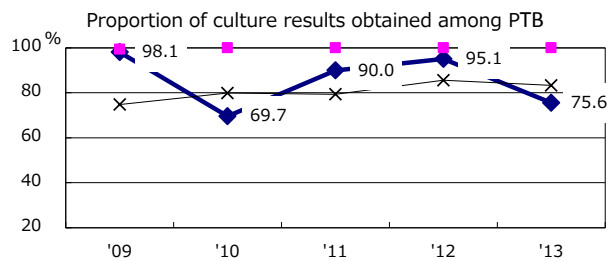
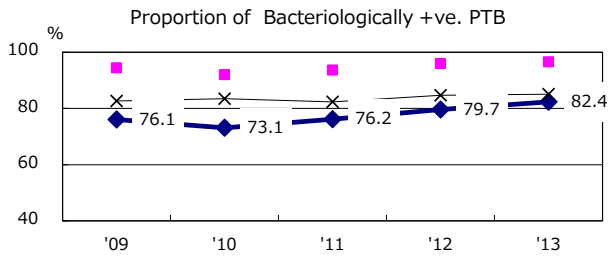
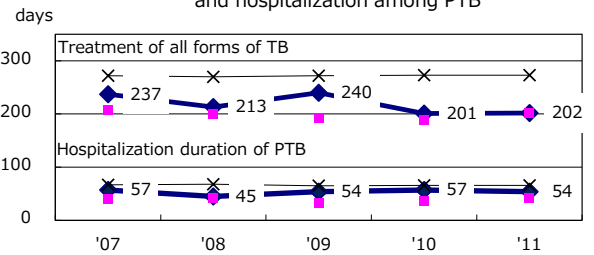
Proportion of cases with total diagnosis delay (> 3 mths) among symptomatic PTB



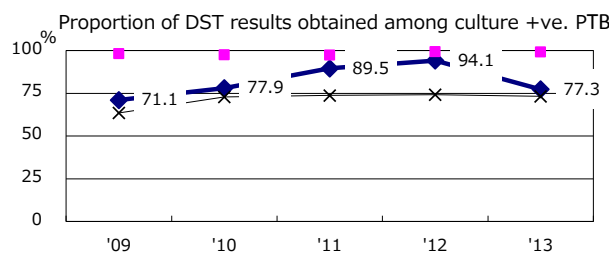
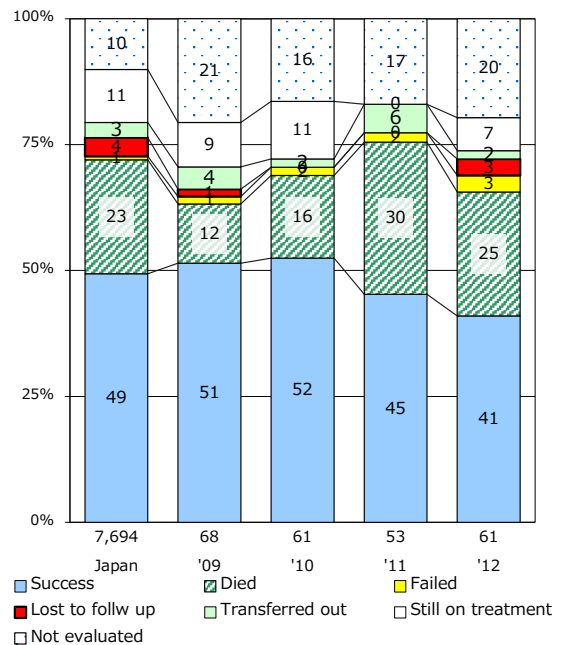
Proportion of TX with HRZ-E/S among all forms of TB cases aged under 80 yrs †



Median duration of treatment of all forms and hospitalization among PTB



Treatment outcomes of new sputum smear +ve.TB



PTB : pumonary TB

† Excluding unknown delay(%)	'09	'10	'11	'12	'13
	60.2	95.1	60.2	39.3	56.8

‡ Excluding unknown Tx(%)	'09	'10	'11	'12	'13
	1.7	7.6	5.2	4.6	7.5