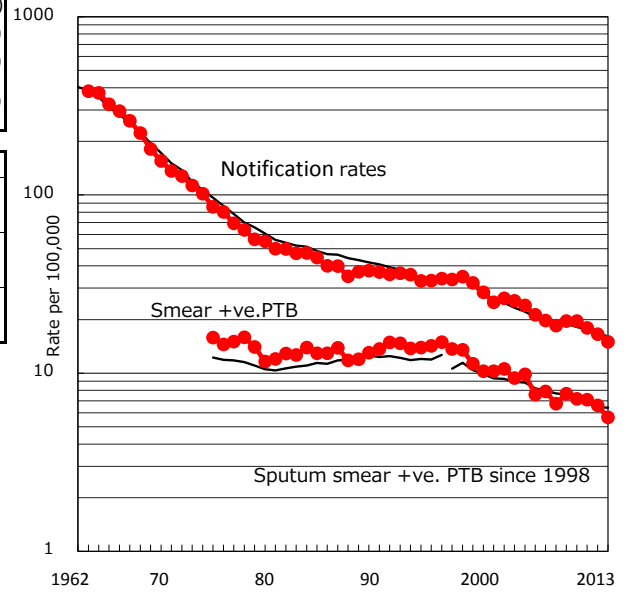


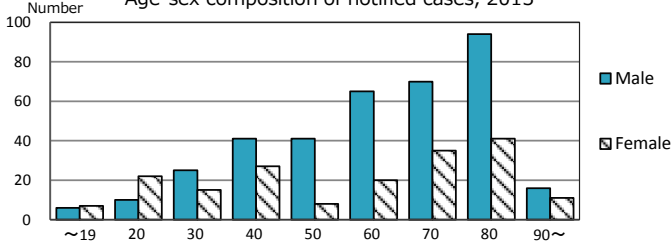
TB statistics in 2013 (Population in Yokohama 3,702,551)	
Among newly registered :	(Japan)
Foreign borns	31 5.6% (5.0%)
TB cases with homeless history	12 2.2% (1.6%)
Male aged 35-59,without job and receiveing public assistance	19 17.8% (10.8%)

Trends	'09	'10	'11	'12	'13
Notified cases	720	722	663	611	554
Rate per 100,000 population	19.6	19.6	18.0	16.5	15.0
Sputum smear +ve. pul.cases	282	265	262	244	209
Rate per 100,000 population	7.7	7.2	7.1	6.6	5.6
Latent Tuberculosis Infection	135	156	229	243	162
Rate per 100,000 population	3.7	4.2	6.2	6.6	4.4

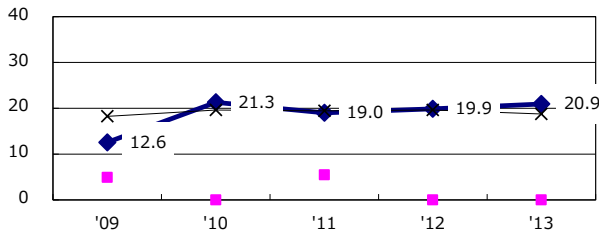
Trends of TB notification rates, all forms and smear +ve.PTB



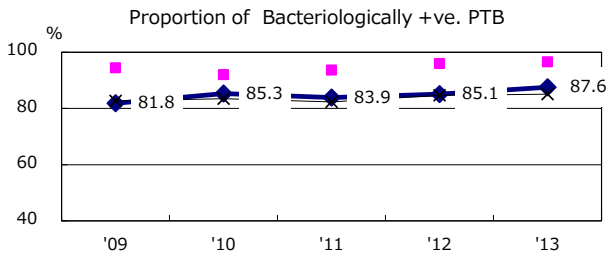
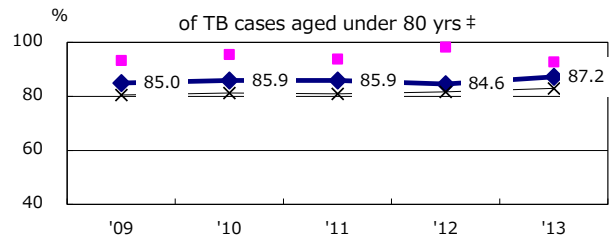
Age-sex composition of notified cases, 2013



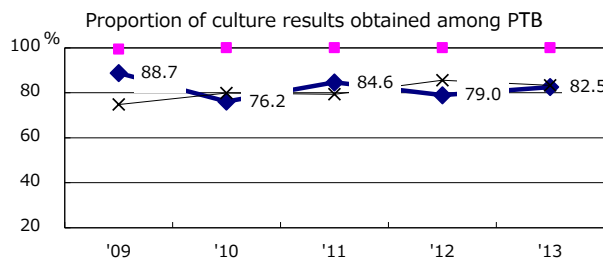
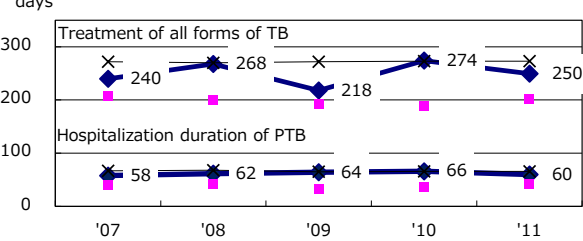
Proportion of cases with total diagnosis delay(> 3 mths) among symptomatic PTB



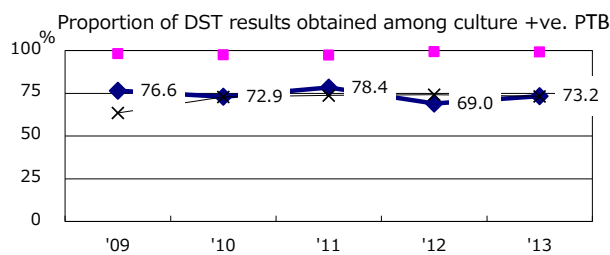
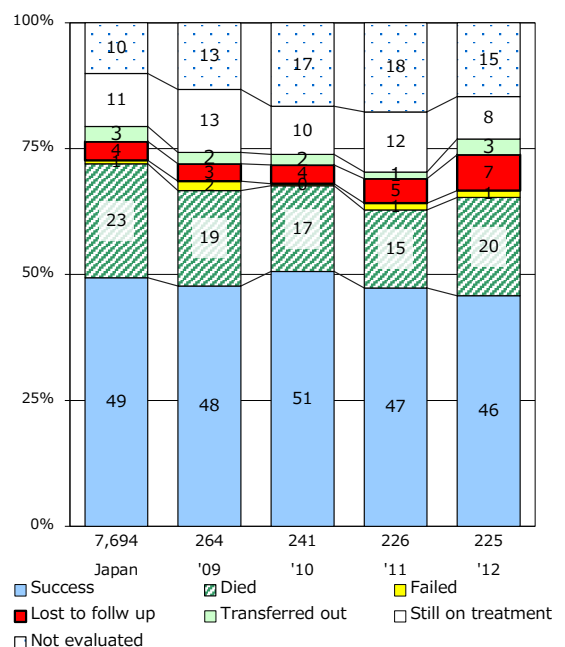
Proportion of TX with HRZ-E/S among all forms of TB cases aged under 80 yrs †



Median duration of treatment of all forms and hospitalization among PTB



Treatment outcomes of new sputum smear +ve.TB



PTB : pumonyary TB

† Excluding unknown delay(%)	'09	'10	'11	'12	'13
	56.3	49.2	46.6	41.8	44.0

‡ Excluding unknown Tx(%)	'09	'10	'11	'12	'13
	2.3	4.3	2.3	1.3	2.0