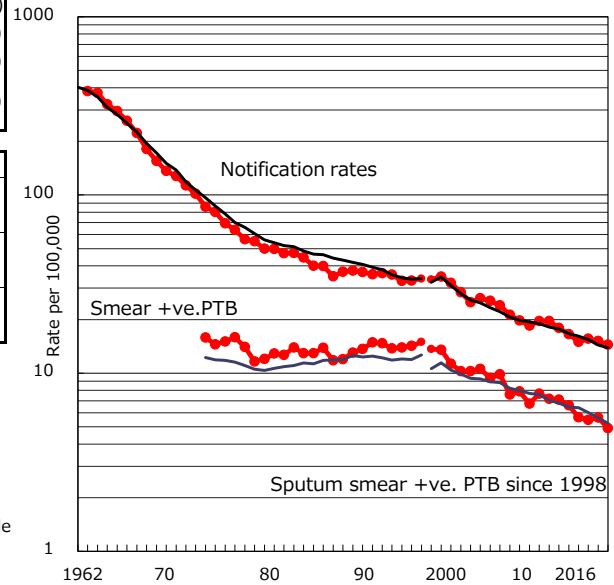


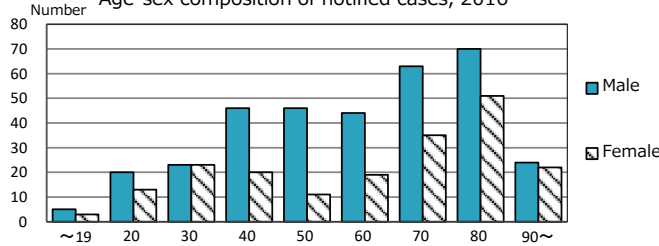
TB statistics in 2016 ( Population in Yokohama C. 3,731,293 )	
Among newly notified : (Japan)	
Foreign borns	33 6.1% (7.6%)
TB cases with homeless history	9 1.7% (1.0%)
Male aged 35-59, without job and receiving public assistance	11 9.6% (7.7%)

Trends	'12	'13	'14	'15	2016
Notified cases	611	554	578	565	538
Rate per 100,000 population	16.5	15.0	15.6	15.2	14.4
Sputum smear +ve. PTB	244	209	203	210	183
Rate per 100,000 population	6.6	5.6	5.5	5.6	4.9
Latent Tuberculosis Infection	243	162	197	179	200
Rate per 100,000 population	6.6	4.4	5.3	4.8	5.4

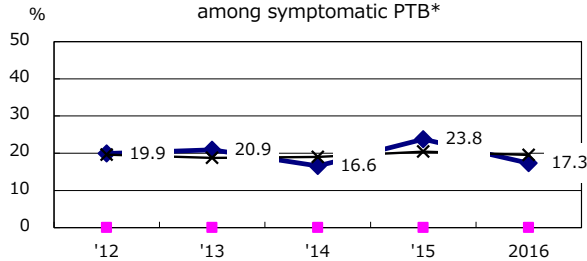
Trends of TB notification rates, all forms and smear +ve.PTB



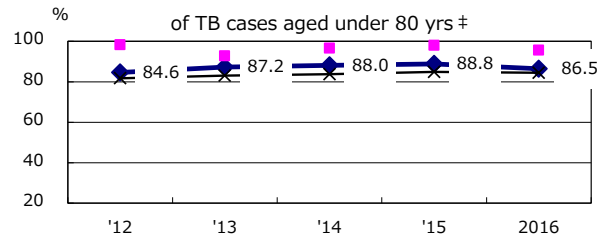
Age-sex composition of notified cases, 2016



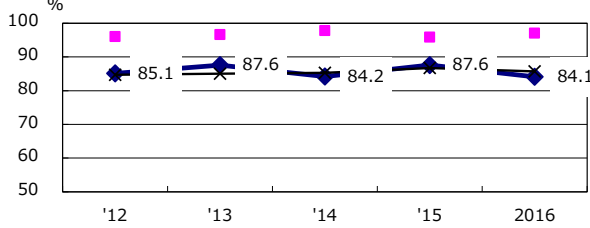
Proportion of cases with total diagnosis delay (> 3 mths) among symptomatic PTB\*



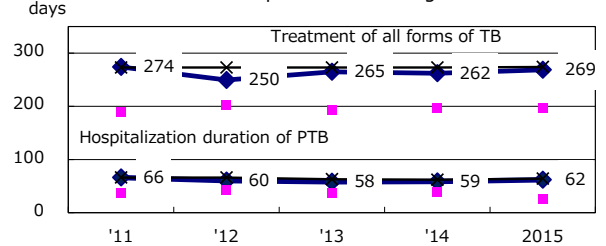
Proportion of TX with HRZ-E/S among all forms of TB cases aged under 80 yrs †



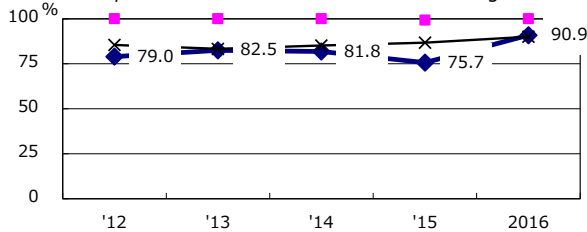
Proportion of Bacteriologically +ve. PTB



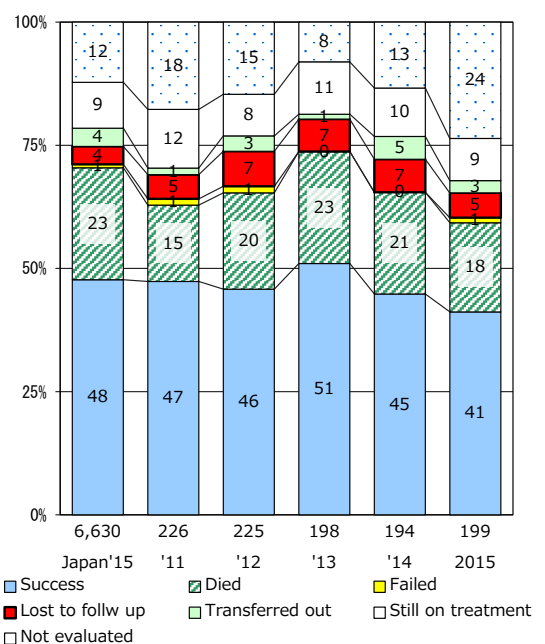
Median duration of treatment of all forms and hospitalization among PTB



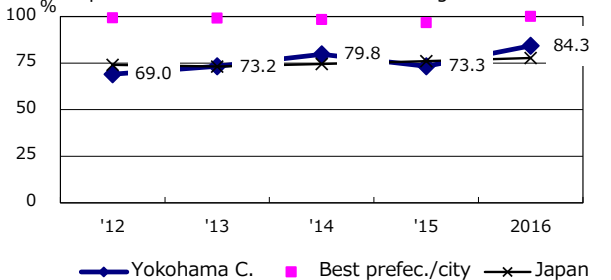
Proportion of culture results obtained among PTB



Treatment outcomes of new sputum smear +ve.TB



Proportion of DST results obtained among culture +ve. PTB



PTB : pulmonary TB

† Excluding unknown delay(%)	'12	'13	'14	'15	2016
	41.8	44.0	39.1	52.3	37.1

‡ Excluding unknown Tx(%)	'12	'13	'14	'15	2016
	1.3	2.0	4.4	5.0	4.3