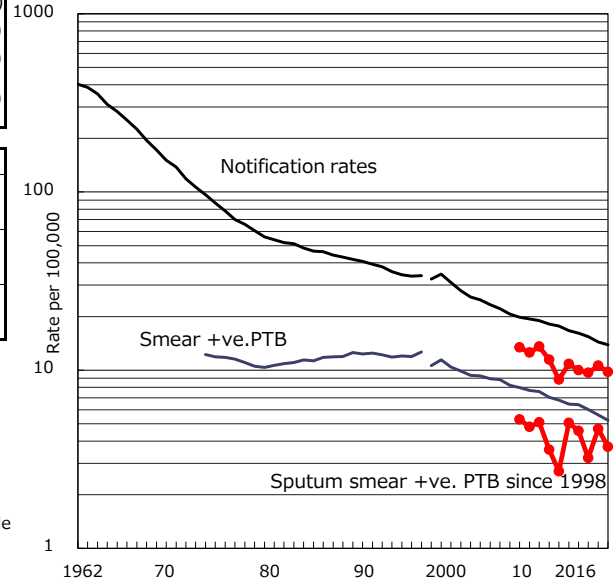


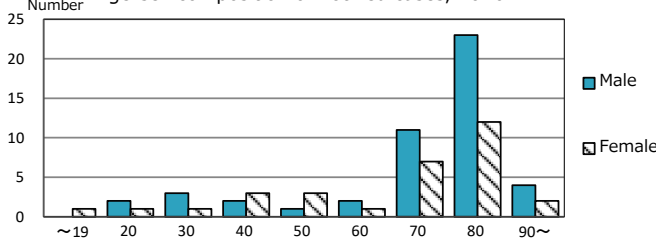
TB statistics in 2016 (Population in Niigata C. 807,450)	
Among newly notified : (Japan)	
Foreign borns	8 10.1% (7.6%)
TB cases with homeless history	0 0.0% (1.0%)
Male aged 35-59, without job and receiving public assistance	0 0.0% (7.7%)

Trends	'12	'13	'14	'15	2016
Notified cases	88	81	78	86	79
Rate per 100,000 population	10.8	10.0	9.7	10.6	9.8
Sputum smear +ve. PTB	41	37	26	38	30
Rate per 100,000 population	5.1	4.6	3.2	4.7	3.7
Latent Tuberculosis Infection	30	27	42	29	43
Rate per 100,000 population	3.7	3.3	5.2	3.6	5.3

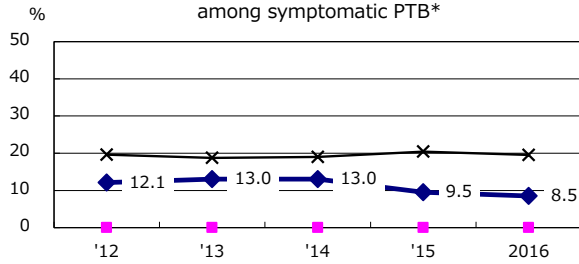
Trends of TB notification rates, all forms and smear +ve.PTB



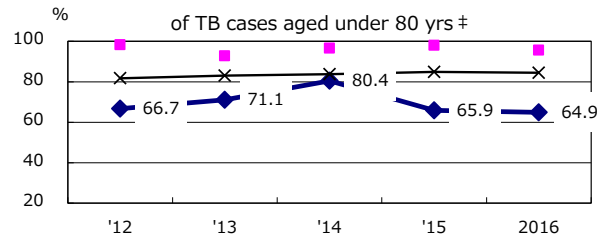
Age-sex composition of notified cases, 2016



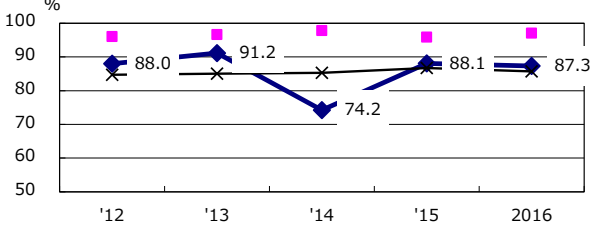
Proportion of cases with total diagnosis delay(> 3 mths) among symptomatic PTB*



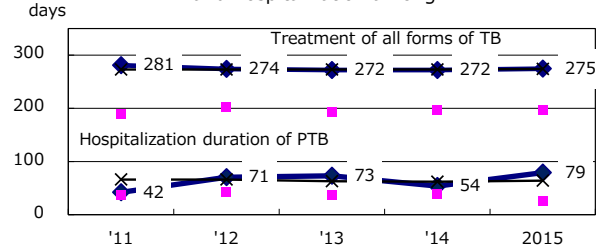
Proportion of TX with HRZ-E/S among all forms of TB cases aged under 80 yrs †



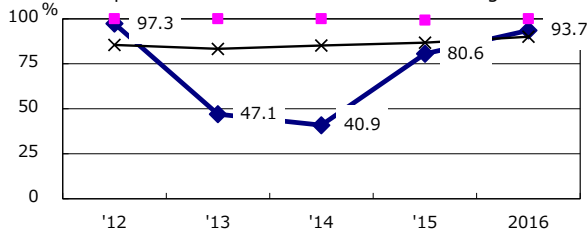
Proportion of Bacteriologically +ve. PTB



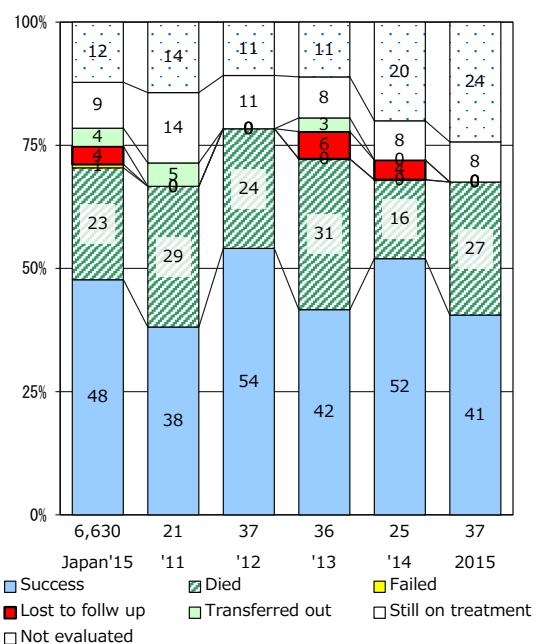
Median duration of treatment of all forms and hospitalization among PTB



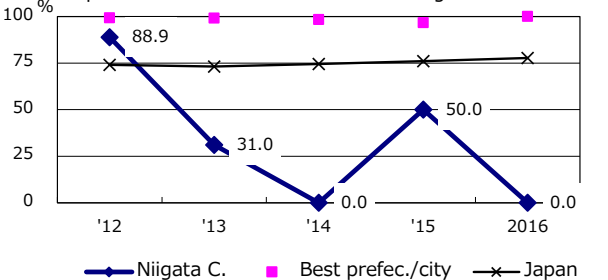
Proportion of culture results obtained among PTB



Treatment outcomes of new sputum smear +ve.TB



Proportion of DST results obtained among culture +ve. PTB



PTB : pulmonary TB

† Excluding unknown delay(%)	'12	'13	'14	'15	2016
	42.1	59.6	52.1	30.0	20.3

‡ Excluding unknown Tx(%)	'12	'13	'14	'15	2016
	0.0	4.3	0.0	0.0	2.6