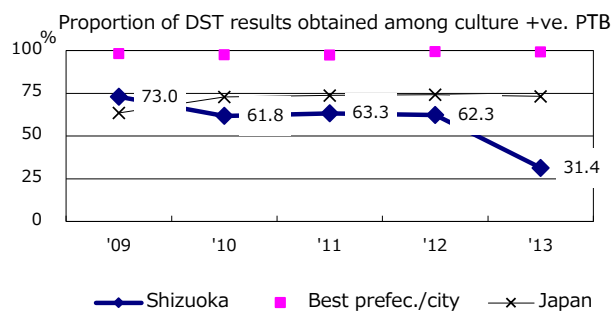
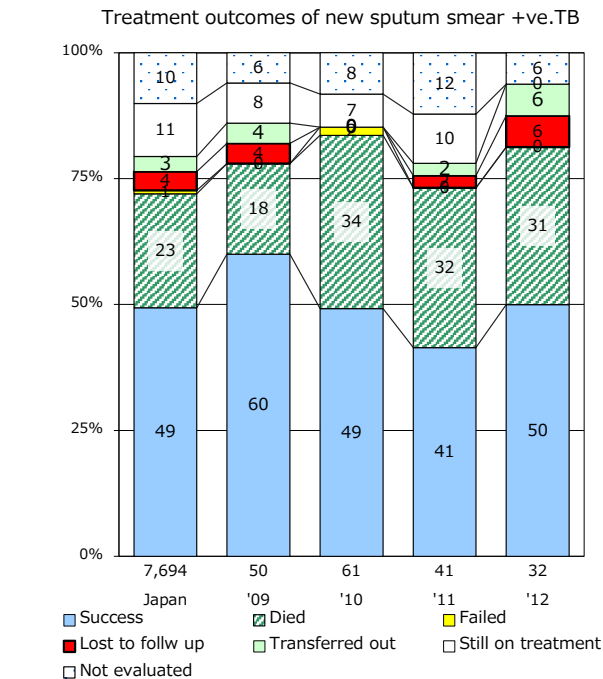
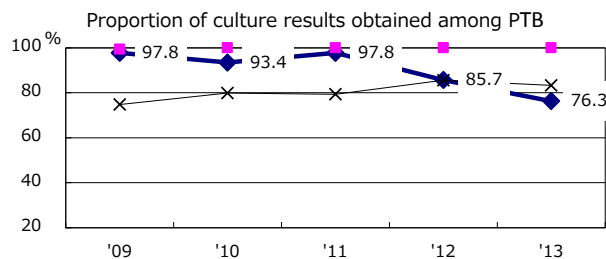
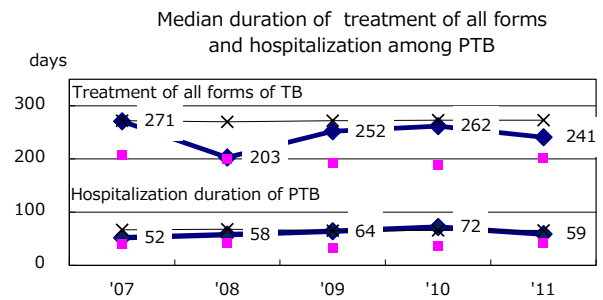
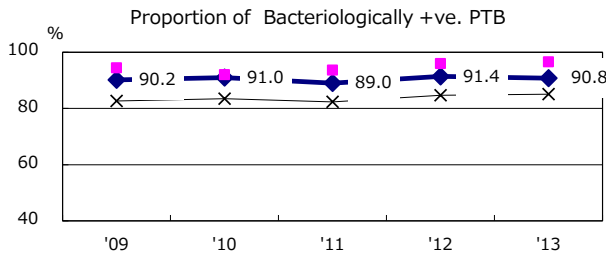
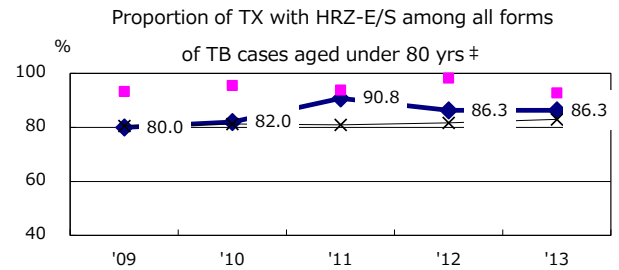
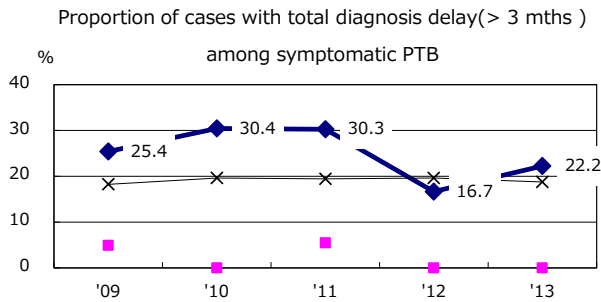
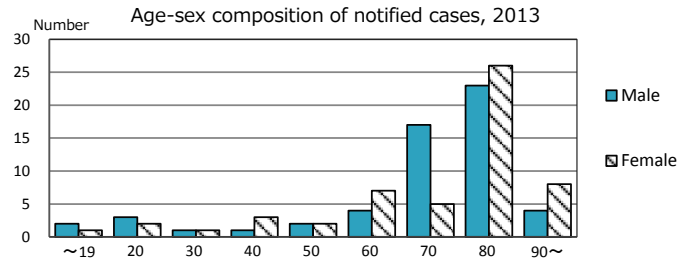
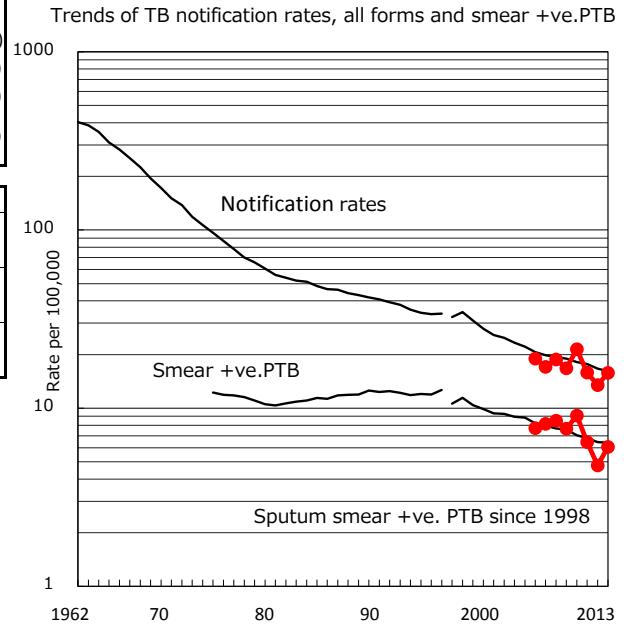


TB statistics in 2013 ( Population in Shizuoka 709,702 )	
Among newly registered : (Japan)	
Foreign borns	9 8.0% (5.0%)
TB cases with homeless history	2 1.8% (1.6%)
Male aged 35-59, without job and receiving public assistance	0 0.0% (10.8%)

Trends	'09	'10	'11	'12	'13
Notified cases	120	153	113	96	112
Rate per 100,000 population	16.7	21.4	15.8	13.5	15.8
Sputum smear +ve. pul.cases	55	65	46	34	43
Rate per 100,000 population	7.7	9.1	6.4	4.8	6.1
Latent Tuberculosis Infection	9	34	42	39	34
Rate per 100,000 population	1.3	4.8	5.9	5.5	4.8



PTB : pumonyary TB

† Excluding unknown delay(%)	'09	'10	'11	'12	'13
	20.3	53.5	1.3	28.8	68.4

‡ Excluding unknown Tx(%)	'09	'10	'11	'12	'13
	4.8	1.1	5.8	1.9	0.0