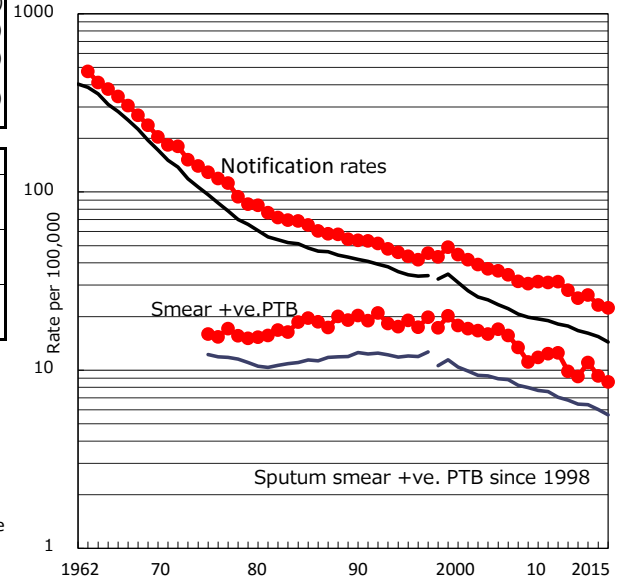


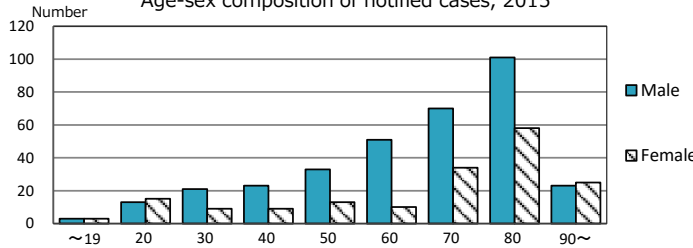
<b>TB statistics in 2015</b> Among newly notified : Foreign borns TB cases with homeless history Male aged 35-59, without job and receiving public assistance	( Population in Nagoya (Japan) 42 8.2% (6.4%) 10 1.9% (0.9%) 8 10.4% (9.0%)	2,295,057 )
---------------------------------------------------------------------------------------------------------------------------------------------------------------------------	-----------------------------------------------------------------------------------------	-------------

Trends	'11	'12	'13	'14	'15
Notified cases	637	575	601	528	514
Rate per 100,000 population	28.1	25.4	26.5	23.2	22.4
Sputum smear +ve. PTB	223	209	251	211	197
Rate per 100,000 population	9.8	9.2	11.1	9.3	8.6
Latent Tuberculosis Infection	175	196	178	206	168
Rate per 100,000 population	7.7	8.6	7.8	9.0	7.3

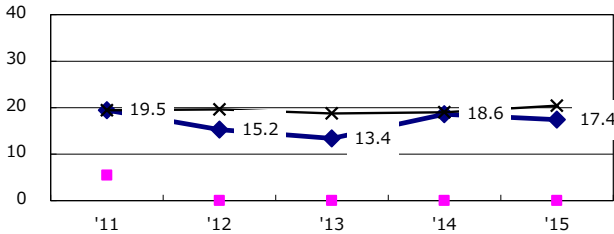
Trends of TB notification rates, all forms and smear +ve.PTB



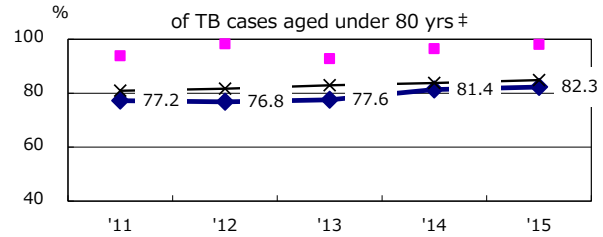
Age-sex composition of notified cases, 2015



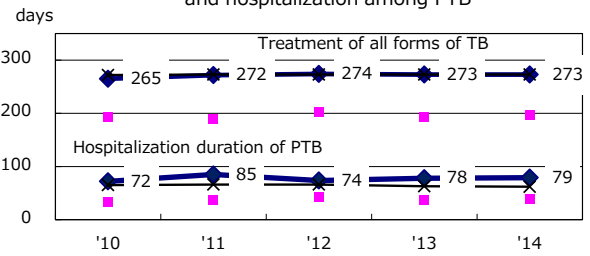
Proportion of cases with total diagnosis delay (> 3 mths) among symptomatic PTB\*



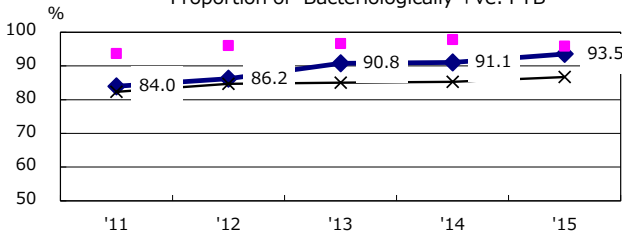
Proportion of TX with HRZ-E/S among all forms of TB cases aged under 80 yrs †



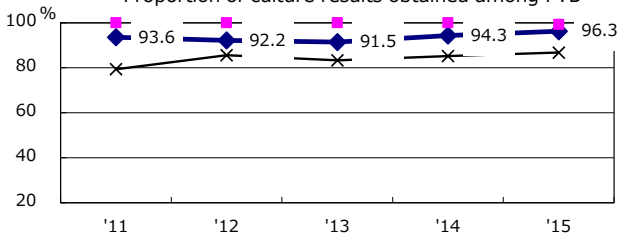
Median duration of treatment of all forms and hospitalization among PTB



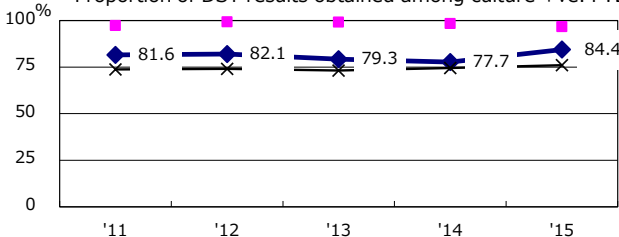
Proportion of Bacteriologically +ve. PTB



Proportion of culture results obtained among PTB



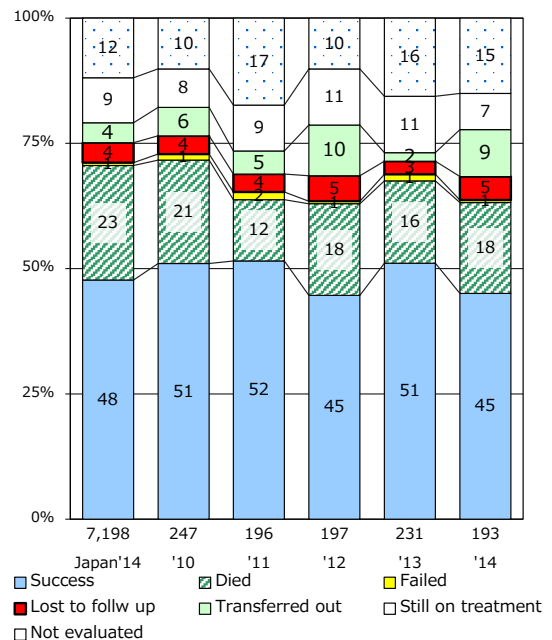
Proportion of DST results obtained among culture +ve. PTB



◆ Nagoya    ■ Best prefect./city    × Japan

PTB : pulmonary TB

Treatment outcomes of new sputum smear +ve.TB



† Excluding unknown delay(%)	'11	'12	'13	'14	'15
	12.5	26.9	20.2	25.2	19.4

‡ Excluding unknown Tx(%)	'11	'12	'13	'14	'15
	1.7	1.5	2.3	3.4	0.7