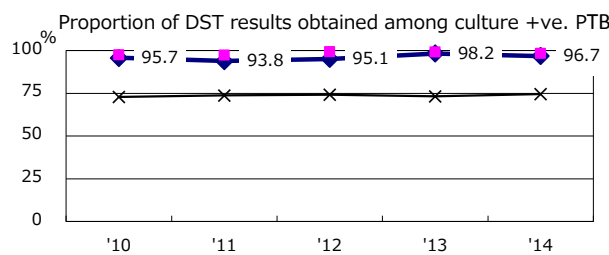
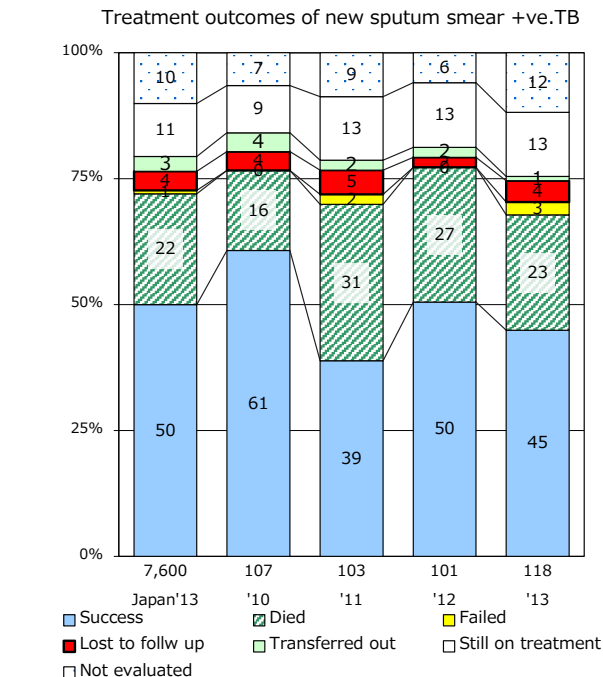
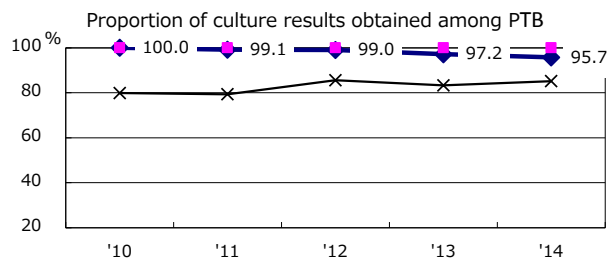
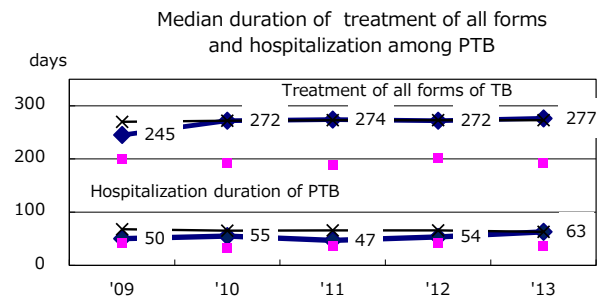
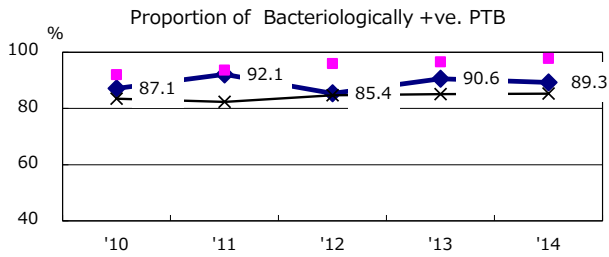
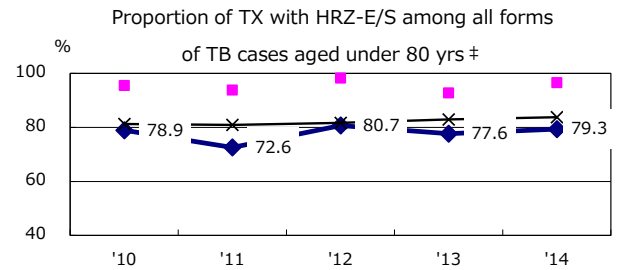
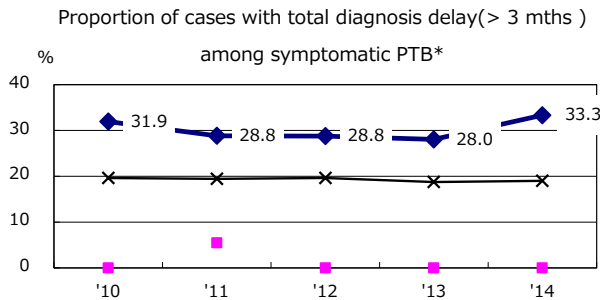
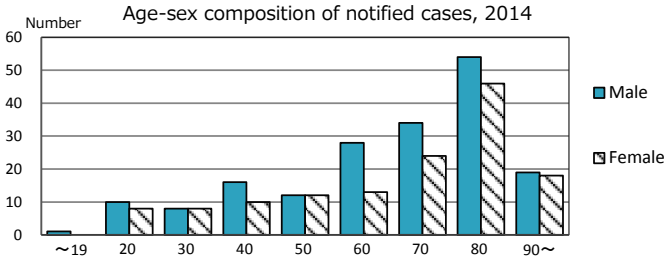
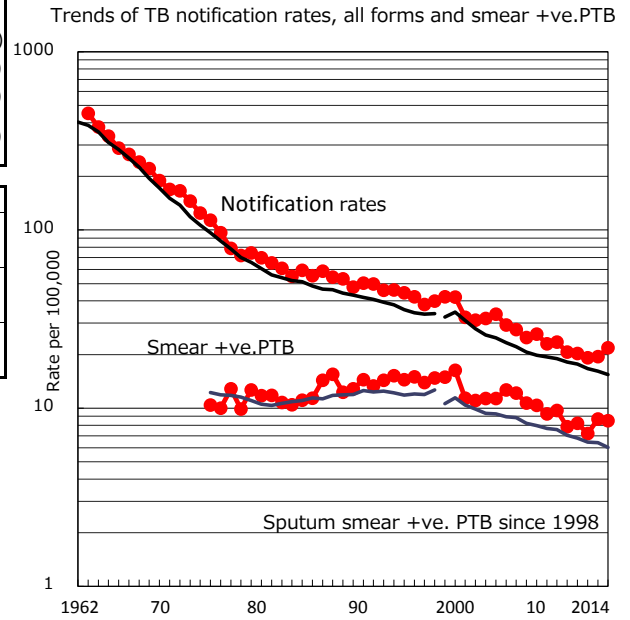


TB statistics in 2014 ( Population in Kyoto 1,469,253 )	
Among newly registered : (Japan)	
Foreign borns	12 3.7% (5.6%)
TB cases with homeless history	2 0.6% (1.1%)
Male aged 35-59, without job and receiving public assistance	1 2.8% (8.0%)

Trends	'10	'11	'12	'13	'14
Notified cases	304	299	282	286	321
Rate per 100,000 population	20.6	20.3	19.2	19.4	21.8
Sputum smear +ve. pul.cases	116	121	106	128	125
Rate per 100,000 population	7.9	8.2	7.2	8.7	8.5
Latent Tuberculosis Infection	45	152	161	87	107
Rate per 100,000 population	3.1	10.3	10.9	5.9	7.3



PTB : pumonyary TB

† Excluding unknown delay(%)	'10	'11	'12	'13	'14
	0.0	0.0	2.4	4.1	1.7

‡ Excluding unknown Tx(%)	'10	'11	'12	'13	'14
	1.0	2.2	1.1	1.2	0.0