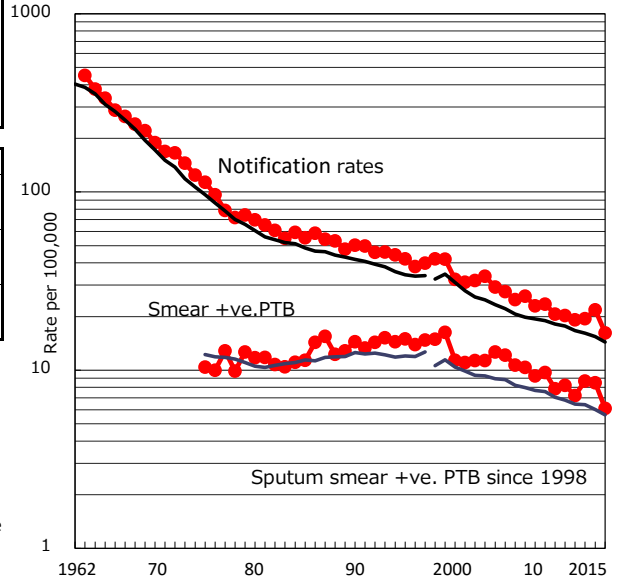


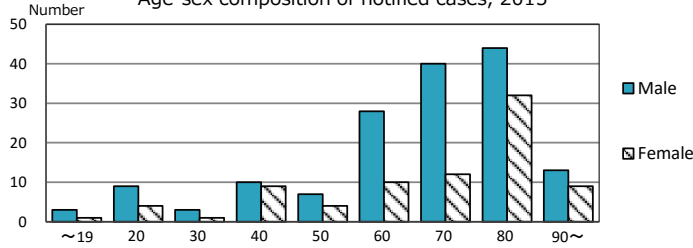
<b>TB statistics in 2015</b> Among newly notified : Foreign borns TB cases with homeless history Male aged 35-59, without job and receiving public assistance	( Population in Kyoto (Japan) 9 3.8% (6.4%) 1 0.4% (0.9%) 3 15.0% (9.0%)	1,474,570 )
---	--	-------------

Trends	'11	'12	'13	'14	'15
Notified cases	299	282	286	321	239
Rate per 100,000 population	20.3	19.2	19.4	21.8	16.2
Sputum smear +ve. PTB	121	106	128	125	90
Rate per 100,000 population	8.2	7.2	8.7	8.5	6.1
Latent Tuberculosis Infection	152	161	87	107	92
Rate per 100,000 population	10.3	10.9	5.9	7.3	6.2

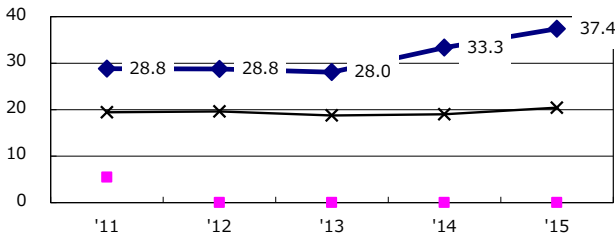
Trends of TB notification rates, all forms and smear +ve.PTB



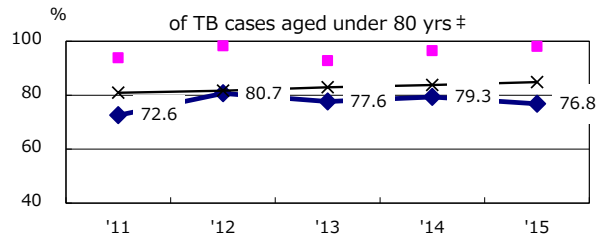
Age-sex composition of notified cases, 2015



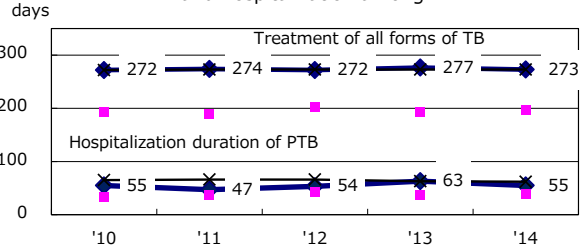
Proportion of cases with total diagnosis delay (> 3 mths) among symptomatic PTB\*



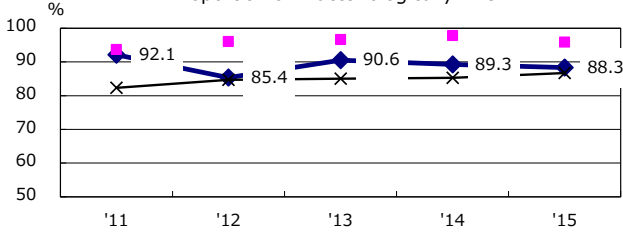
Proportion of TX with HRZ-E/S among all forms of TB cases aged under 80 yrs †



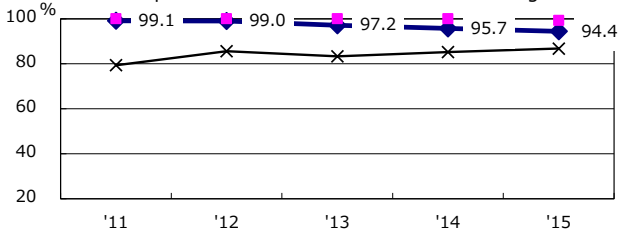
Median duration of treatment of all forms and hospitalization among PTB



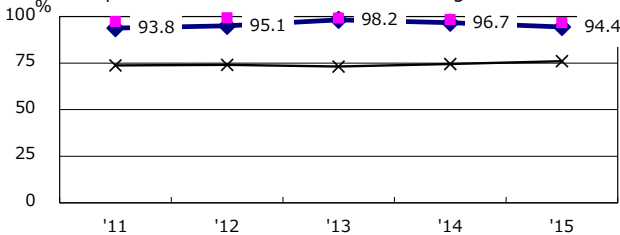
Proportion of Bacteriologically +ve. PTB



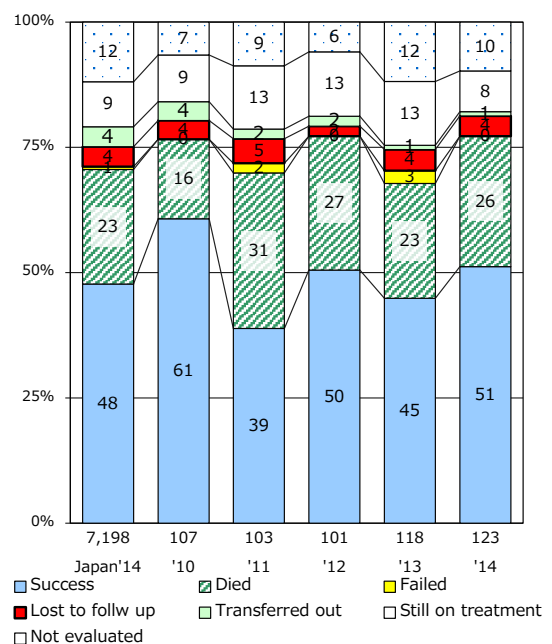
Proportion of culture results obtained among PTB



Proportion of DST results obtained among culture +ve. PTB



Treatment outcomes of new sputum smear +ve.TB



PTB : pulmonary TB

† Excluding unknown delay(%)	'11	'12	'13	'14	'15
	0.0	2.4	4.1	1.7	4.7

‡ Excluding unknown Tx(%)	'11	'12	'13	'14	'15
	2.2	1.1	1.2	0.0	2.1