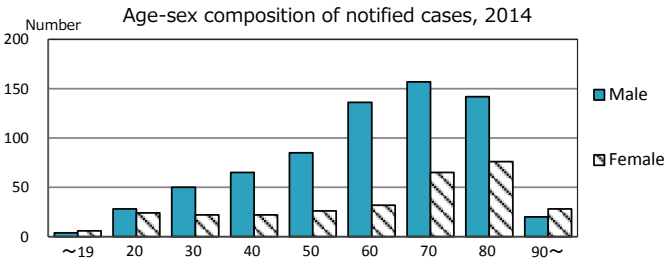
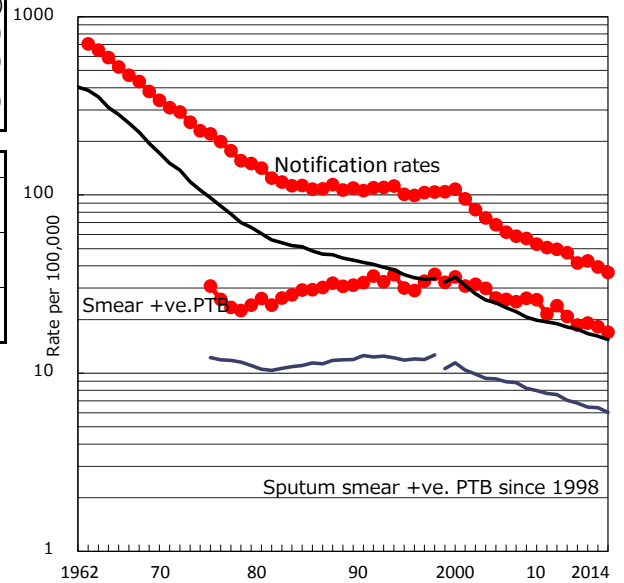


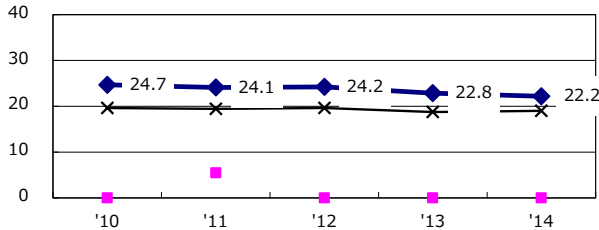
TB statistics in 2014 (Population in Osaka 2,686,246)	
Among newly registered : (Japan)	
Foreign borns	30 3.0% (5.6%)
TB cases with homeless history	36 3.6% (1.1%)
Male aged 35-59, without job and receiving public assistance	35 17.5% (8.0%)

Trends	'10	'11	'12	'13	'14
Notified cases	1,265	1,109	1,142	1,058	988
Rate per 100,000 population	47.4	41.5	42.7	39.4	36.8
Sputum smear +ve. pul.cases	555	497	512	488	456
Rate per 100,000 population	20.8	18.6	19.1	18.2	17.0
Latent Tuberculosis Infection	169	250	278	275	263
Rate per 100,000 population	6.3	9.4	10.4	10.2	9.8

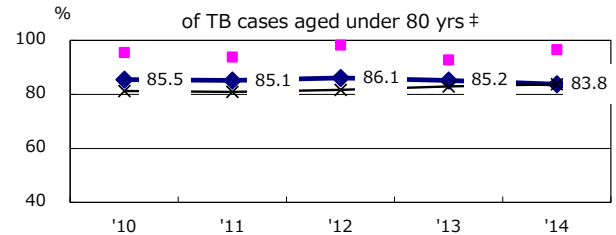
Trends of TB notification rates, all forms and smear +ve.PTB



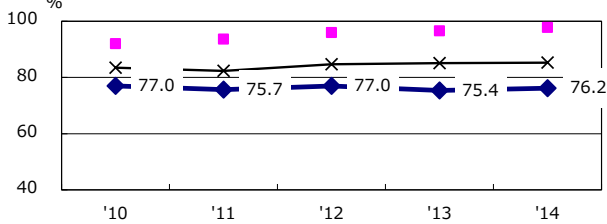
Proportion of cases with total diagnosis delay (> 3 mths) among symptomatic PTB*



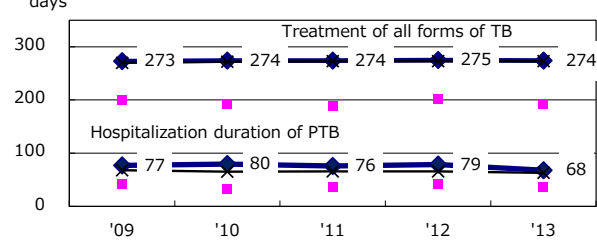
Proportion of TX with HRZ-E/S among all forms of TB cases aged under 80 yrs †



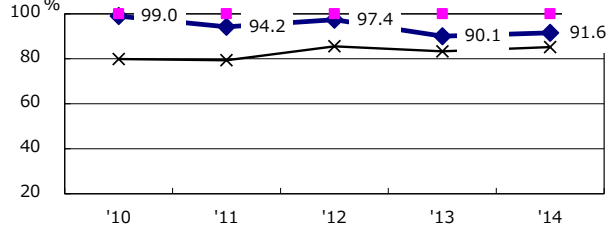
Proportion of Bacteriologically +ve. PTB



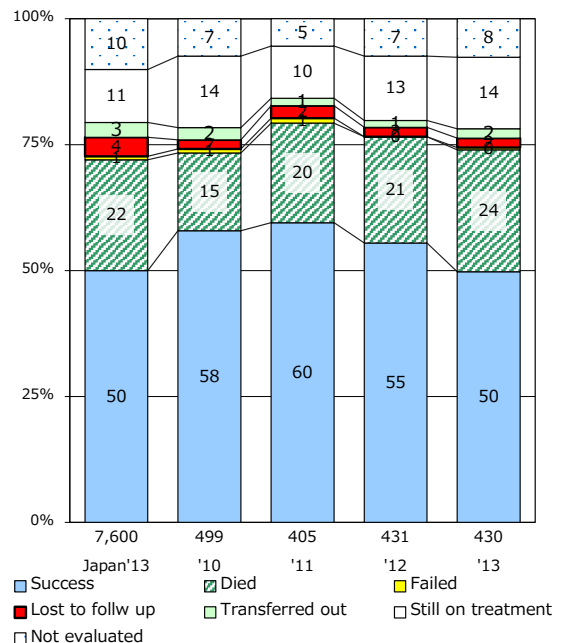
Median duration of treatment of all forms and hospitalization among PTB



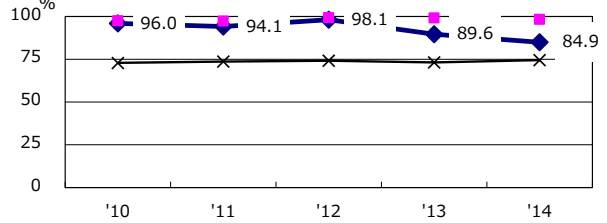
Proportion of culture results obtained among PTB



Treatment outcomes of new sputum smear +ve.TB



Proportion of DST results obtained among culture +ve. PTB



PTB : pumonyary TB

† Excluding unknown delay(%)	'10	'11	'12	'13	'14
	1.5	1.2	3.1	10.7	9.0

‡ Excluding unknown Tx(%)	'10	'11	'12	'13	'14
	1.5	1.3	2.5	3.5	2.6